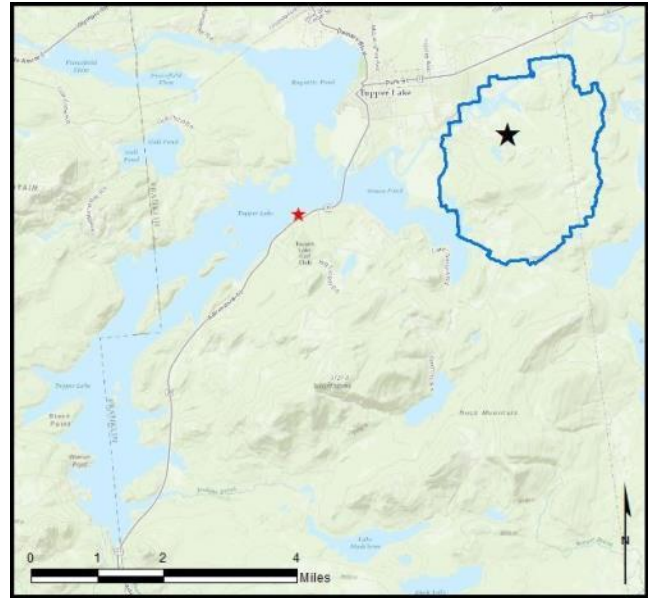


Tupper Lake

AIS intercepted: 9
Boats inspected: 2,095
Dates of Operation: May 27 – Oct 8
Number of visitors: 4,558
Boats failing inspection: 18.7%

Total Number of Days Covered: 108
Weekly Coverage: 7 days
Visitors showing spread prevention awareness: 83%
Number of previously visited waterways: 83

AIS Present in Waterbody: variable-leaf milfoil
Stewardship History: 2009 - present



Watercraft	Boat Type									total # boats observed	total # boats inspected
	Barge	Canoe	Dock	Kayak	Motor	PWC	Row	Sail	SUP		
# of boats observed	1	256	0	204	1605	58	0	5	7	2136	2095
percentage of total boats	0.0%	12%	0%	10%	75%	3%	0%	0.2%	0.3%	100%	98%

Boats observed at launch, including those not inspected. PWC=personal watercraft, SUP=stand-up paddleboard.

total # visitors	organisms found		total organisms	# boats dirty	# boats w/AIS	# of inspections	% of inspected boats dirty	% of inspected boats w/AIS
	entering	leaving						
4558	102	421	523	391	9	2095	18.7%	0.4%

Boats dirty = watercraft with any organic material, invasive, non-invasive or unknown.

Visitor Responses	AIS spread prevention awareness											# groups asked
	yes	I	WB	DB	BB	LW	Dis	Dry	same lake	first/frozen	didn't ask	
# of groups	1499	583	344	396	33	73	25	271	440	208	38	1806
percentage of total groups asked	83%	32%	19%	22%	2%	4%	1%	15%	24%	12%	NA	

Yes = showed AIS spread prevention awareness; I = inspected boat; WB = washed boat; DB = drained bilge; BB = emptied bait bucket; LW = drained livewell; Dis = disposed of unused bait; Dry = dried boat; same Lake = boat only goes in this lake; first/frozen = first launch of season or frozen boat.

Organisms Removed																total # AIS	
	BW	CLP*	ELO	GRS	EWM*	NM	UM	VLM*	MUD	NON	PND	SWF*	WC*	WL	ZM*		OTR
# of organisms	7	0	2	257	2	1	1	7	79	97	6	0	0	55	0	9	9
percentage of total orgs	1%	0%	0.4%	49%	0.4%	0.2%	0.2%	1%	15%	19%	1%	0%	0%	11%	0%	2%	

BW = bladderwort; CLP = curly-leaf pondweed; ELO = elodea; GRS = grass; EWM = Eurasian watermilfoil; NM = native milfoil; UM = unknown milfoil; VLM = variable-leaf milfoil; MUD = mud; NON = non-aquatic debris; PND = native pondweed; SWF = spiny waterflea; WC = water chestnut; WL = water lily; ZM = zebra mussel; OTR = other; */AIS = aquatic invasive species.

Aquatic Invasive Species Intercepted by Stewards	# found on boats launching	Previous Waterway	# found on boats retrieving	Previous Waterway
Eurasian watermilfoil	2	Lower Saranac Lake (1), None (1)	0	N/A
variable-leaf milfoil	2	Lake Durant (1), Tupper Lake (1)	5	Tupper Lake
Totals	4		5	

Previous Waterways for Launching Boats	# visits
Tupper Lake	532
NONE	325
Upper Saranac Lake	35
DID NOT ASK	16
Long Lake	16
Lake Flower	15
Cranberry Lake	10
Lake George	9
Raquette River	9
Lower Saranac Lake	8
UNKNOWN (boater doesn't know)	7
St. Lawrence River	6
Hudson River	4
Lake Placid	4
Oneida Lake	4
Raquette Lake	4
RENTAL	4
Second Pond	4
Carry Falls Reservoir	3
Delta Lake	3
Great Sacandaga Lake	3
Saratoga Lake	3
Schroon Lake	3
Black River	2
Brant Lake	2
Canadarago Lake	2
Canandaigua Lake	2
Candlewood Lake, Brookfield, CT	2
Cayuga Lake	2
Deep Creek Lake, Garrett County, MD	2

Previous Waterways for Launching Boats	# visits
Fourth Lake	2
Greenwood Lake, Passaic County, NJ	2
Harris Lake, Newcomb, NY	2
Indian Lake	2
Lake Champlain	2
Lake Eaton	2
Lake Ontario	2
Lewey Lake	2
Little Wolf Pond	2
Oswegatchie River	2
Otsego Lake	2
Schuylkill River, PA	2
somewhere in Pennsylvania	2
Atlantic Ocean	1
Big Lake, Washington County, ME	1
Blue Mountain Lake	1
Bog River	1
Cazenovia Lake	1
Chateaugay Lake	1
Chazy Lake	1
Conesus Lake	1
Congamond Lakes, Southwick, MA	1
Delaware River	1
Fern Lake, Black Brook, NY	1
Fish Creek Ponds	1
Follensby Clear Pond	1
Forked Lake	1
Gull Pond, Franklin County, NY	1
Hadlock Pond, Fort Ann, NY	1

Previous Waterways for Launching Boats	# visits
Higley Falls Reservoir (Higley Flow)	1
Horseshoe Lake	1
Horseshoe Pond, Piercefild, NY	1
Kiwassa Lake	1
Lake Abanakee	1
Lake Bonaparte	1
Lake Durant	1
Lake Hopatcong, Sussex County, NJ	1
Lake Kushaquaw (Rainbow/Buck)	1
Lake Moomaw, Warm Springs, VA	1
Lake Ozonia, Hopkinton, NY	1
Lake Pleasant	1
Little Tupper Lake	1
Lower St Regis Lake	1
Meacham Lake	1
Middle Saranac Lake	1
Mohawk River	1
Ottawa River, Ottawa, ON	1
Piseco Lake	1
Pleasant Hill Lake, OH	1
Seventh Lake	1
Silver Lake, Westchester County, NY	1
Skaneateles Lake	1
Stewarts Bridge Reservoir	1
Sylvia Lake, Fowler, NY	1
Taylor Pond	1
Union Falls Pond	1
Upper St Regis Lake	1
Waneta Lake, Tyrone, NY	1
Total groups	112

State of Motorized Boat Registration
(n=1,647)

