

AWI Data Analysis Support Services Reports

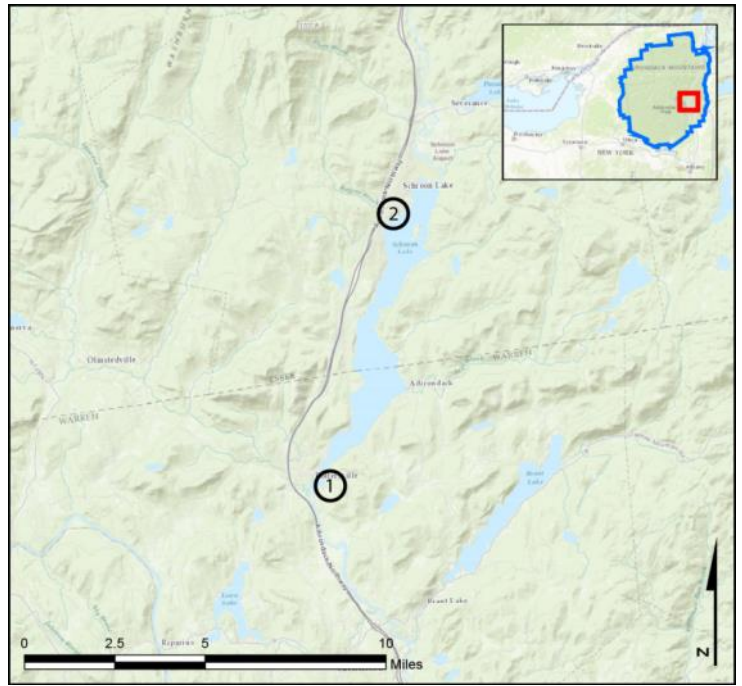
Schroon Region – Schroon Lake

**AIS intercepted:** 37  
**Boats inspected:** 7,948  
**Number of visitors:** 19,020  
**Boats failing inspection:** 3.1%  
**Visitors showing spread prevention awareness:** 69%  
**Number of previously visited waterways:** 91

**AIS Present in Waterbody:** curly-leaf pondweed,  
Eurasian watermilfoil

**Partnerships:** East Shore Schroon Lake Association,  
Schroon Lake Association, Town of Horicon

**Notes:** AWI provided support through steward training,  
supervisory service, a customized survey on the loaner  
iPad, and data assistance throughout the season.



1-Horicon Launch/Decon; 2-Town of Schroon Launch

Watercraft	Boat Type									total # boats observed	total # boats inspected
	Barge	Canoe	Dock	Kayak	Motor	PWC	Row	Sail	SUP		
Horicon Launch (Warren)	0	38	0	217	4708	583	2	24	1	5573	5546
percentage of total boats	0%	1%	0%	4%	84%	10%	0%	0%	0%	100%	100%
Horicon Decon (Warren)	0	5	0	24	469	63	3	4	1	569	569
percentage of total boats	0%	1%	0%	4%	82%	11%	1%	1%	0%	100%	100%
Town of Schroon Launch (Essex)	3	5	1	52	1407	324	13	36	1	1842	1833
percentage of total boats	0%	0%	0%	3%	76%	18%	1%	2%	0%	100%	100%
<b>totals</b>	<b>3</b>	<b>48</b>	<b>1</b>	<b>293</b>	<b>6584</b>	<b>970</b>	<b>18</b>	<b>64</b>	<b>3</b>	<b>7984</b>	<b>7948</b>
percentage of total boats	<b>0.04%</b>	<b>1%</b>	<b>0.01%</b>	<b>4%</b>	<b>82%</b>	<b>12%</b>	<b>0.2%</b>	<b>1%</b>	<b>0.04%</b>	<b>100%</b>	<b>100%</b>

Boats observed at launch, including those not inspected. PWC=personal watercraft, SUP=stand-up paddleboard.

	total # visitors	organisms found			total organisms	# boats dirty	# boats w/AIS	# of inspections	% of inspected boats dirty	% of inspected boats w/AIS
		entering	leaving	roadside						
Horicon Launch (Warren)	13726	32	327	0	359	231	29	5546	4.2%	0.5%
Horicon Decon (Warren)	1139	6	1	0	7	7	5	569	1.2%	0.9%
Town of Schroon Launch (Essex)	4155	7	5	0	12	9	1	1833	0.5%	0.1%
<b>totals</b>	<b>19020</b>	<b>45</b>	<b>333</b>	<b>0</b>	<b>378</b>	<b>247</b>	<b>35</b>	<b>7948</b>	<b>3.1%</b>	<b>0.4%</b>

Boats dirty = watercraft with any organic material, invasive, non-invasive or unknown.

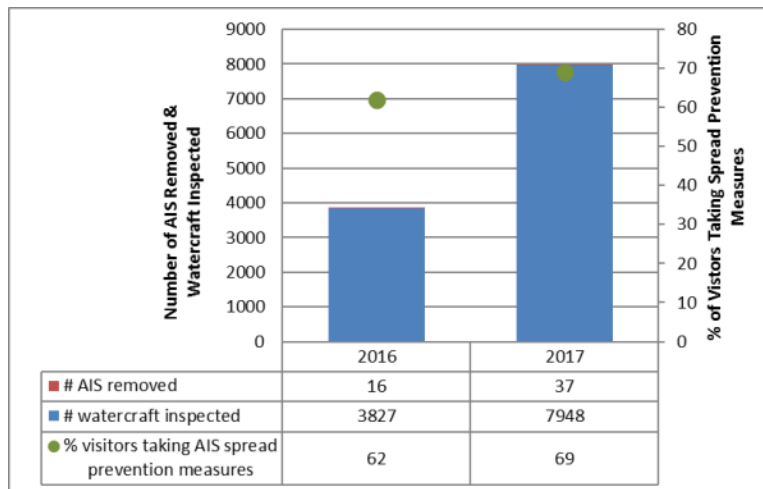
Visitor Responses	AIS spread prevention awareness											# groups asked
	yes	I	WB	DB	BB	LW	Dis	Dry	same lake	first/frozen	didn't ask	
Horicon Launch (Warren)	3438	486	494	832	14	54	7	387	1385	697	675	4666
percentage of total groups asked	74%	10%	11%	18%	0%	1%	0%	8%	30%	15%	NA	
Horicon Decon (Warren)	139	64	69	79	7	13	4	75	15	4	209	345
percentage of total groups asked	40%	19%	20%	23%	2%	4%	1%	22%	4%	1%	NA	
Town of Schroon Launch (Essex)	1116	203	141	82	5	50	3	162	655	182	14	1742
percentage of total groups asked	64%	12%	8%	5%	0%	3%	0%	9%	38%	10%	NA	
<b>totals</b>	<b>4693</b>	<b>753</b>	<b>704</b>	<b>993</b>	<b>26</b>	<b>117</b>	<b>14</b>	<b>624</b>	<b>2055</b>	<b>883</b>	<b>898</b>	<b>6753</b>
percentage of total groups asked	69%	11%	10%	15%	0.4%	2%	0.2%	9%	30%	13%	NA	

Yes = showed AIS spread prevention awareness; I = inspected boat; WB = washed boat; DB = drained bilge; BB = emptied bait bucket; LW = drained livewell; Dis = disposed of unused bait; Dry = dried boat; same Lake = boat only goes in this lake; first/frozen = first launch of season or frozen boat.

Organisms Removed																	total # AIS
	BW	CLP*	ELO	GRS	EWM*	NM	UM	VLM*	MUD	NON	PND	SWF*	WC*	WL	ZM*	OTR	
Horicon Launch (Warren)	14	21	70	119	8	2	8	1	2	9	64	0	1	38	0	2	31
percentage of total orgs	4%	6%	19%	33%	2%	1%	2%	0%	1%	3%	18%	0%	0%	11%	0%	1%	
Horicon Decon (Warren)	0	0	0	1	2	0	0	0	0	1	0	0	1	0	2	0	5
percentage of total orgs	0%	0%	0%	14%	29%	0%	0%	0%	0%	14%	0%	0%	14%	0%	29%	0%	
Town of Schroon Launch (Essex)	0	0	0	2	0	0	0	0	2	4	2	0	0	0	1	1	1
percentage of total orgs	0%	0%	0%	17%	0%	0%	0%	0%	17%	33%	17%	0%	0%	0%	8%	8%	
<b>totals</b>	<b>14</b>	<b>21</b>	<b>70</b>	<b>122</b>	<b>10</b>	<b>2</b>	<b>8</b>	<b>1</b>	<b>4</b>	<b>14</b>	<b>66</b>	<b>0</b>	<b>2</b>	<b>38</b>	<b>3</b>	<b>3</b>	<b>37</b>
percentage of total orgs	4%	6%	19%	32%	3%	1%	2%	0.3%	1%	4%	17%	0%	1%	10%	1%	1%	

BW = bladderwort; CLP = curly-leaf pondweed; ELO = elodea; GRS = grass; EWM = Eurasian watermilfoil; NM = native milfoil; UM = unknown milfoil; VLM = variable-leaf milfoil; MUD = mud; NON = non-aquatic debris; PND = native pondweed; SWF = spiny waterflea; WC = water chestnut; WL = water lily; ZM = zebra mussel; OTR = other; \*/AIS = aquatic invasive species.

Aquatic Invasive Species Intercepted by Stewards	# found on boats launching	Previous Waterway	# found on boats retrieving	Previous Waterway
curly-leaf pondweed	1	Schroon Lake (1)	20	Schroon Lake
Eurasian watermilfoil	5	Saratoga Lake (2), Schroon Lake (2), Lake Champlain (1)	5	Schroon Lake
variable-leaf milfoil	1	Schroon Lake (1)	0	N/A
water chestnut	2	Hudson River (2)	0	N/A
zebra mussel	3	Lake Champlain (1), Mohawk River (1), Saratoga Lake (1)	0	N/A
<b>Totals</b>	<b>12</b>		<b>25</b>	



Schroon - Horicon

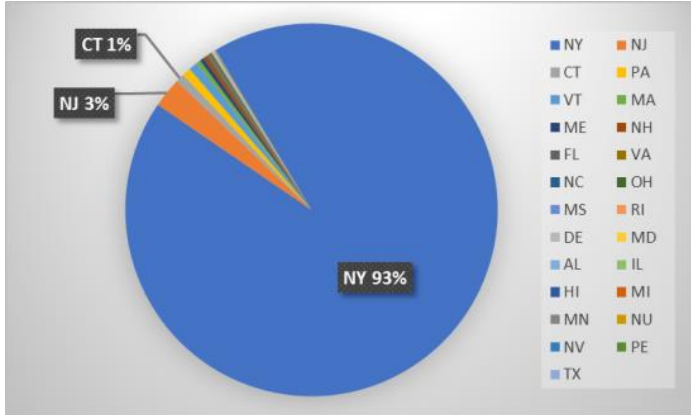
Previous Waterways for Launching Boats	# visits	Previous Waterways for Launching Boats	# visits	Previous Waterways for Launching Boats	# visits
Schroon Lake	1713	Lake Hopatcong, Sussex County, NJ	3	Chesapeake Bay	1
NONE	1125	Raquette Lake	3	Conesus Lake	1
Lake George	233	Upper Saranac Lake	3	Copake Lake, Copake, NY	1
Brant Lake	96	Canada Lake	2	Crystal Lake, Warren County, NY	1
Saratoga Lake	89	Canandaigua Lake	2	Duck Harbor Pond, Equinuk, PA	1
Hudson River	67	Candlewood Lake, Brookfield, CT	2	Erie Canal	1
Lake Champlain	66	Connecticut River	2	Fishkill Creek, Union Vale, NY	1
Great Sacandaga Lake	47	Delaware River	2	Fulton Chain of Lakes	1
DID NOT ASK	42	Delta Lake	2	Lakeview Pond, Foxborough, MA	1
Mohawk River	28	Greenwood Lake, Passaic County, NJ	2	Lincoln Pond, Elizabethtown, NY	1
UNKNOWN (boater doesn't know)	26	Hadlock Pond, Fort Ann, NY	2	Lower Saranac Lake	1
Loon Lake (Warren County)	20	Kayaderoseras Creek, Saratoga, NY	2	Mirror Lake	1
Cossayuna Lake, Argyle, NY	15	Lake Eaton	2	Mohegan Lake, Yorktown, NY	1
Long Lake	13	Lake Luzerne	2	Mountain View Lake	1
RENTAL	10	Lake Mahopac, Mahopac, NY	2	Onota Lake, Pittsfield, MA	1
Indian Lake	7	Oneida Lake	2	Peck Lake, Fulton County, NY	1
Atlantic Ocean	6	Otsego Lake	2	Pontoosuc Lake, Berkshire Cnty, MA	1
Cayuga Lake	5	Putnam Pond, Ticonderoga, NY	2	Raystown Lake, Huntingdon Cnty, PA	1
Lake Bomoseen, Castleton, VT	5	Snyder's Lake, North Greenbush, NY	2	Saranac River	1
Paradox Lake	5	St. Lawrence River	2	Schroon River	1
somewhere in New Jersey	5	Taylor Pond	2	Skaneateles Lake	1
Ballston Lake	4	Tupper Lake	2	somewhere in Delaware	1
Fourth Lake	4	Archer Vly, Greenfield, NY	1	somewhere in Florida	1
Lake Ontario	4	Bantam Lake, Morris, CT	1	somewhere in New Hampshire	1
Piseco Lake	4	Batten Kill River, VT	1	somewhere in Pennsylvania	1
Round Lake (Saratoga County)	4	Black Lake	1	Stillwater Reservoir	1
Stewarts Bridge Reservoir	4	Blue Mountain Lake	1	Webb Lake, Weld, ME	1
				<b>Total groups</b>	<b>3726</b>

Schroon - Essex

Previous Waterways for Launching Boats	# visits	Previous Waterways for Launching Boats	# visits
Schroon Lake	656	Crane Pond, Schroon, NY	1
NONE	373	Fish Creek Ponds	1
Lake George	18	Fourth Lake	1
Paradox Lake	17	Glen Lake, Queensbury, NY	1
Great Sacandaga Lake	12	Greenwood Lake, Passaic County, NJ	1
Lake Champlain	10	Lake Abanakee	1
Brant Lake	8	Lake Luzerne	1
Hudson River	7	Lake Michigan	1
Saratoga Lake	7	Lake Sunapee, Sunapee, NH	1
DID NOT ASK	5	Lake Willoughby, Westmore, VT	1
Loon Lake (Warren County)	4	Long Lake	1
Eagle Lake, Ticonderoga, NY	3	Meacham Lake	1
Cayuga Lake	2	Onota Lake, Pittsfield, MA	1
Copake Lake, Copake, NY	2	Raquette Lake	1
Lake Harris	2	RENTAL	1
Long Pond, Rutland, MA	2	Skaneateles Lake	1
Mohawk River	2	somewhere in Connecticut	1
Oneida Lake	2	somewhere in Kentucky	1
Atlantic Ocean	1	Susquehanna River	1
Candlewood Lake, Brookfield, CT	1	White Lake	1
Connecticut River	1	<b>Total groups</b>	<b>1155</b>

State of Motorized Boat Registration

Horicon (n=5,680)



Schroon (n=1,696)

