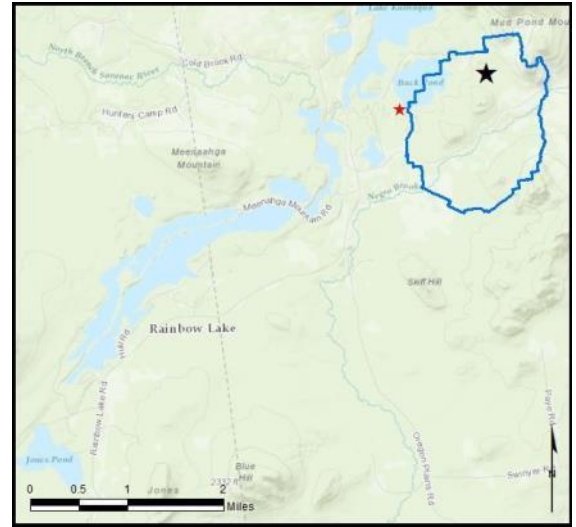


### Rainbow Lake - Buck Pond

**AIS intercepted:** 0  
**Boats inspected:** 983  
**Dates of Operation:** May 26 – October 8  
**Number of visitors:** 1,619  
**Boats failing inspection:** 9.8%

**Total Number of Days Covered:** 83  
**Weekly Coverage:** 5 days  
**Visitors showing spread prevention awareness:** 73%  
**Number of previously visited waterways:** 64



**AIS Present in Waterbody:** none  
**Stewardship History:** 2005 - present  
**Partnership:** Rainbow Lake Association

Watercraft	Boat Type									total # boats observed	total # boats inspected
	Barge	Canoe	Dock	Kayak	Motor	PWC	Row	Sail	SUP		
# of boats observed	0	231	0	400	326	4	11	2	17	991	983
percentage of total boats	0%	23%	0%	40%	33%	0.4%	1%	0.2%	2%	100%	99%

Boats observed at launch, including those not inspected. PWC=personal watercraft, SUP=stand-up paddleboard.

total # visitors	organisms found		total organisms	# boats dirty	# boats w/AIS	# of inspections	% of inspected boats dirty	% of inspected boats w/AIS
	entering	leaving						
1619	48	92	140	96	0	983	9.8%	0%

Boats dirty = watercraft with any organic material, invasive, non-invasive or unknown.

Visitor Responses	AIS spread prevention awareness											# groups asked
	yes	I	WB	DB	BB	LW	Dis	Dry	same lake	first/frozen	didn't ask	
# of groups	470	217	169	101	14	21	8	89	92	54	10	647
percentage of total groups asked	73%	34%	26%	16%	2%	3%	1%	14%	14%	8%	NA	

Yes = showed AIS spread prevention awareness; I = inspected boat; WB = washed boat; DB = drained bilge; BB = emptied bait bucket; LW = drained livewell; Dis = disposed of unused bait; Dry = dried boat; same Lake = boat only goes in this lake; first/frozen = first launch of season or frozen boat.

Organisms Removed																	total # AIS
	BW	CLP*	ELO	GRS	EWM*	NM	UM	VLM*	MUD	NON	PND	SWF*	WC*	WL	ZM*	OTR	
# of organisms	13	0	4	11	0	3	0	0	40	53	4	0	0	10	0	2	0
percentage of total orgs	9%	0%	3%	8%	0%	2%	0%	0%	29%	38%	3%	0%	0%	7%	0%	1%	

BW = bladderwort; CLP = curly-leaf pondweed; ELO = elodea; GRS = grass; EWM = Eurasian watermilfoil; NM = native milfoil; UM = unknown milfoil; VLM = variable-leaf milfoil; MUD = mud; NON = non-aquatic debris; PND = native pondweed; SWF = spiny waterflea; WC = water chestnut; WL = water lily; ZM = zebra mussel; OTR = other; \*/AIS = aquatic invasive species.

Previous Waterways for Launching Boats	# visits
Lake Kushaqua (Rainbow/Buck)	153
NONE	121
Lake Champlain	19
Upper Saranac Lake	11
RENTAL	10
Lake Flower	7
Fish Creek Ponds	6
Raquette River	6
UNKNOWN (boater doesn't know)	6
DID NOT ASK	5
Chateaugay Lake	4
Lower Saranac Lake	4
Osgood Pond	4
Saranac River	4
Upper St Regis Lake	4
Lake Ontario	3
Little Clear Pond	3
Moose Pond, St. Armand, NY	3
Taylor Pond	3
Ausable River	2
Bog River	2
Cranberry Lake	2
Fern Lake, Black Brook, NY	2

Previous Waterways for Launching Boats	# visits
Franklin Falls Flow	2
Jones Pond, Brighton, NY	2
Lake Clear	2
Lake Colby	2
Lake Placid	2
Meacham Lake	2
Mud Pond, Santa Clara, NY	2
somewhere in Maine	2
Arrowhead Mountain Lake, Milton, VT	1
Black River	1
Carry Falls Reservoir	1
Chazy Lake	1
Chubb River	1
Connecticut River	1
Connery Pond, North Elba, NY	1
Deer River Flow, Duane, NY	1
First Lake	1
Floodwood Pond	1
Grasse River	1
Great Chazy River, Clinton County, NY	1
Green Pond, Santa Clara, NY	1
Higley Falls Reservoir (Higley Flow)	1
Holcomb Pond, North Elba, NY	1

Previous Waterways for Launching Boats	# visits
Hudson River	1
Indian Lake	1
Kayuta Lake	1
Lake Alice, Chazy, NY	1
Lake George	1
Lewey Lake	1
Loon Lake, Franklin, NY	1
Lows Lake	1
Middle Saranac Lake	1
Mirror Lake	1
Mountain View Lake	1
Otselic River, Whitney Point, NY	1
Paradox Lake	1
Raquette Lake	1
Rollins Pond	1
Round Pond, Keene, NY	1
Second Pond	1
Soft Maple Reservoir, Lewis Cnty, NY	1
somewhere in New Jersey	1
St. Lawrence River	1
St. Regis River	1
Tupper Lake	1
Union Falls Pond	1
<b>Total groups</b>	<b>438</b>

State of Motorized Boat Registration  
(n=336)

