

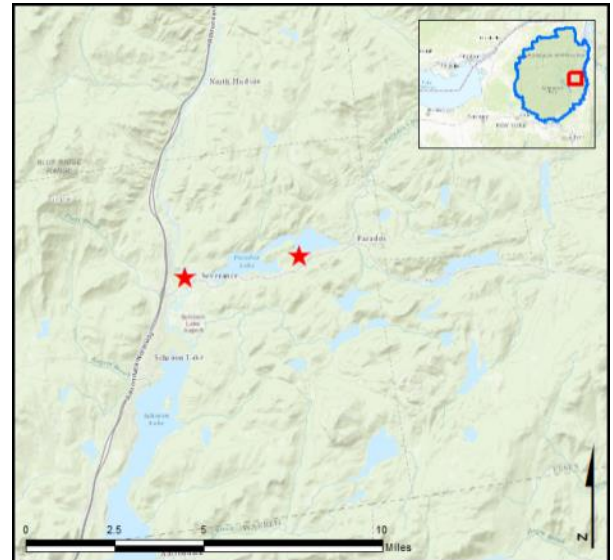
AWI Data Analysis Support Services Reports

Schroon Region – Paradox Lake & Northern Schroon/Paradox Decon Station

AIS intercepted: 4
Boats inspected: 1,384
Number of visitors: 2,811
Boats failing inspection: 5.6%
Visitors showing spread prevention awareness: 83%
Number of previously visited waterways: 63

AIS Present in Waterbody: curly-leaf pondweed,
 Eurasian watermilfoil, variable-leaf milfoil
Partnerships: Paradox Lake Association, NYSDEC Paradox Lake
 Campground

Notes: AWI provided support through steward training, supervisory
 service, a customized survey on the loaner iPad, and data assistance
 throughout the season.



Watercraft	Boat Type									total # boats observed	total # boats inspected
	Barge	Canoe	Dock	Kayak	Motor	PWC	Row	Sail	SUP		
Paradox Lake	0	113	7	463	838	37	14	4	7	1483	1371
percentage of total boats	0%	8%	0%	31%	57%	2%	1%	0%	0%	100%	92%
N Schroon/Paradox Decon	0	0	0	0	13	0	0	0	0	13	13
percentage of total boats	0%	0%	0%	0%	100%	0%	0%	0%	0%	100%	100%
totals	0	113	7	463	851	37	14	4	7	1496	1384
percentage of total boats	0%	8%	0%	31%	57%	2%	1%	0%	0%	100%	93%

Boats observed at launch, including those not inspected. PWC=personal watercraft, SUP=stand-up paddleboard.

	total # visitors	organisms found			total organisms	# boats dirty	# boats w/AIS	# of inspections	% of inspected boats dirty	% of inspected boats w/AIS
		entering	leaving	roadside						
Paradox Lake	2787	14	72	0	86	77	4	1371	5.6%	0.3%
N Schroon/Paradox Decon	24	0	0	0	0	0	0	13	0.0%	0.0%
totals	2811	14	72	0	86	77	4	1384	5.6%	0.3%

Boats dirty = watercraft with any organic material, invasive, non-invasive or unknown.

Visitor Responses	AIS spread prevention awareness											# groups asked
	yes	I	WB	DB	BB	LW	Dis	Dry	same lake	first/frozen	didn't ask	
Paradox Lake	614	171	256	60	13	13	7	134	80	188	477	742
percentage of total groups asked	83%	23%	35%	8%	2%	2%	1%	18%	11%	25%	NA	
N Schroon/Paradox Decon	0	0	0	0	0	0	0	0	0	0	11	2
percentage of total groups asked	0%	0%	0%	0%	0%	0%	0%	0%	0%	0%	NA	
totals	614	171	256	60	13	13	7	134	80	188	488	744
percentage of total groups asked	83%	23%	34%	8%	2%	2%	1%	18%	11%	25%	NA	

Yes = showed AIS spread prevention awareness; I = inspected boat; WB = washed boat; DB = drained bilge; BB = emptied bait bucket; LW = drained livewell; Dis = disposed of unused bait; Dry = dried boat; same Lake = boat only goes in this lake; first/frozen = first launch of season or frozen boat.

Organisms Removed																	total # AIS
	BW	CLP*	ELO	GRS	EWM*	NM	UM	VLM*	MUD	NON	PND	SWF*	WC*	WL	ZM*	OTR	
Paradox Lake	7	0	3	26	3	3	7	0	0	2	30	1	0	2	0	2	4
percentage of total orgs	8%	0%	3%	30%	3%	3%	8%	0%	0%	2%	35%	1%	0%	2%	0%	2%	
N Schroon/Paradox Decon	0	0	0	0	0	0	0	0	0	0	0	0	0	0	0	0	0
percentage of total orgs	0%	0%	0%	0%	0%	0%	0%	0%	0%	0%	0%	0%	0%	0%	0%	0%	
totals	7	0	3	26	3	3	7	0	0	2	30	1	0	2	0	2	4
percentage of total orgs	8%	0%	3%	30%	3%	3%	8%	0%	0%	2%	35%	1%	0%	2%	0%	2%	

BW = bladderwort; CLP = curly-leaf pondweed; ELO = elodea; GRS = grass; EWM = Eurasian watermilfoil; NM = native milfoil; UM = unknown milfoil; VLM = variable-leaf milfoil; MUD = mud; NON = non-aquatic debris; PND = native pondweed; SWF = spiny waterflea; WC = water chestnut; WL = water lily; ZM = zebra mussel; OTR = other; */AIS = aquatic invasive species.

Aquatic Invasive Species Intercepted by Stewards	# found on boats launching	Previous Waterway	# found on boats retrieving	Previous Waterway
Eurasian watermilfoil	1	Lake George (1)	2	Paradox Lake
spiny waterflea	1	None (1)	0	N/A
Totals	2		2	

Previous Waterways for Launching Boats	# visits
NONE	332
Paradox Lake	117
Schroon Lake	54
Lake Champlain	25
Lake George	19
Brant Lake	10
Saratoga Lake	10
Eagle Lake, Ticonderoga, NY	9
Putnam Pond, Ticonderoga, NY	8
Hudson River	7
RENTAL	5
Great Sacandaga Lake	4
Schroon River	4
UNKNOWN (boater doesn't know)	4
Blue Mountain Lake	3
Cossayuna Lake, Argyle, NY	3
DID NOT ASK	3
Dunham Reservoir, Grafton, NY	3
Lincoln Pond, Elizabethtown, NY	3
Minerva Lake, Minerva, NY	3
Atlantic Ocean	2
Ballston Lake	2
Candlewood Lake, Brookfield, CT	2

Previous Waterways for Launching Boats	# visits
Eagle Lake, Indian Lake, NY	2
Indian Lake	2
Long Lake	2
Loon Lake (Warren County)	2
Loon Lake, Chester, NY	2
Mohawk River	2
Adirondack Lake, Indian Lake, NY	1
Ausable River	1
Babcock Lake, Grafton, NY	1
Burden Lake, Rensselaer County, NY	1
Carter Pond, Greenwich, NY	1
Cayuga Lake	1
Chenango River	1
Cranberry Lake, Byram Township, NJ	1
Crane Pond, Schroon, NY	1
Delta Lake	1
Eaton Reservoir, Madison County, NY	1
Fish Creek Ponds	1
Garnet Lake, Johnsburg, NY	1
Lake Abanakee	1
Lake Algonquin	1
Lake Colby	1
Lake Lonely, Saratoga Springs, NY	1

Previous Waterways for Launching Boats	# visits
Lake Placid	1
Lake Welch, Haverstraw, NY	1
Lake Winchester, Winchester, CT	1
Lake Winnepesaukee, NH	1
Loon Lake (Franklin County)	1
Mirror Lake	1
Moosehead Lake, ME	1
Moreau Lake, Moreau, NY	1
Palmer Pond, North Hudson, NY	1
Raquette Lake	1
Rensselaer Lake, Albany, NY	1
Reservoir Number One, Port Jervis, NY	1
Round Lake, Clifton Park, NY	1
Somerset Reservoir, Somerset, VT	1
somewhere in New Jersey	1
somewhere in Vermont	1
Stewarts Bridge Reservoir	1
Stockbridge Bowl, Stockbridge, MA	1
Sutherland Pond, Chatham, NY	1
Thompsons Lake, Knox, NY	1
Titicus Reservoir, North Salem, NY	1
Tuscarora Lake, Barnesville, PA	1
Total groups	683

State of Motorized Boat Registration
(n=842)

