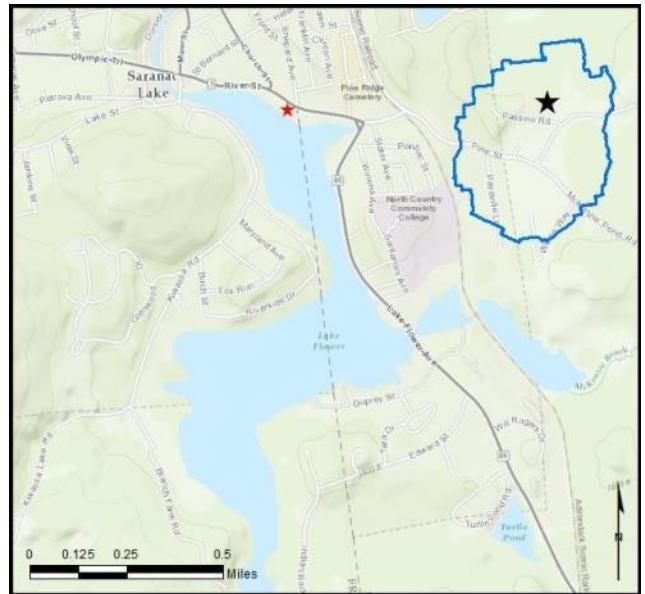


## Lake Flower

**AIS intercepted:** 121  
**Boats inspected:** 2,338  
**Dates of Operation:** May 27 – October 9  
**Number of visitors:** 4,829  
**Boats failing inspection:** 13.6%

**Total Number of Days Covered:** 115  
**Weekly Coverage:** 7 days  
**Visitors showing spread prevention awareness:** 80%  
**Number of previously visited waterways:** 85

**AIS Present in Waterbody:** Eurasian watermilfoil,  
variable-leaf milfoil, curly-leaf pondweed  
**Stewardship History:** 2011 - present



Watercraft	Boat Type									total # boats observed	total # boats inspected
	Barge	Canoe	Dock	Kayak	Motor	PWC	Row	Sail	SUP		
# of boats observed	0	193	0	307	1729	139	6	3	20	2397	2338
percentage of total boats	0%	8%	0%	13%	72%	6%	0.3%	0.1%	1%	100%	98%

Boats observed at launch, including those not inspected. PWC=personal watercraft, SUP=stand-up paddleboard.

total # visitors	organisms found		total organisms	# boats dirty	# boats w/AIS	# of inspections	% of inspected boats dirty	% of inspected boats w/AIS
	entering	leaving						
4829	124	403	527	319	114	2338	13.6%	4.9%

Boats dirty = watercraft with any organic material, invasive, non-invasive or unknown.

Visitor Responses	AIS spread prevention awareness											# groups asked
	yes	I	WB	DB	BB	LW	Dis	Dry	same lake	first/frozen	didn't ask	
# of groups	1652	986	596	532	28	71	24	593	270	174	67	2062
percentage of total groups asked	80%	48%	29%	26%	1%	3%	1%	29%	13%	8%	NA	

Yes = showed AIS spread prevention awareness; I = inspected boat; WB = washed boat; DB = drained bilge; BB = emptied bait bucket; LW = drained livewell; Dis = disposed of unused bait; Dry = dried boat; same Lake = boat only goes in this lake; first/frozen = first launch of season or frozen boat.

Organisms Removed																total # AIS	
	BW	CLP*	ELO	GRS	EWM*	NM	UM	VLM*	MUD	NON	PND	SWF*	WC*	WL	ZM*		OTR
# of organisms	53	2	40	150	29	9	5	87	8	54	46	0	0	36	3	5	121
percentage of total orgs	10%	0.4%	8%	28%	6%	2%	1%	17%	2%	10%	9%	0%	0%	7%	1%	1%	

BW = bladderwort; CLP = curly-leaf pondweed; ELO = elodea; GRS = grass; EWM = Eurasian watermilfoil; NM = native milfoil; UM = unknown milfoil; VLM = variable-leaf milfoil; MUD = mud; NON = non-aquatic debris; PND = native pondweed; SWF = spiny waterflea; WC = water chestnut; WL = water lily; ZM = zebra mussel; OTR = other; \*/AIS = aquatic invasive species.

Aquatic Invasive Species Intercepted by Stewards	# found on boats launching	Previous Waterway	# found on boats retrieving	Previous Waterway
curly-leaf pondweed	0	N/A	2	Lake Flower
Eurasian watermilfoil	10	Lake Flower (5), <i>None</i> (2), Bantam Lake CT (1), Chateaugay Lake (1), Second Pond (1)	19	Lake Flower
variable-leaf milfoil	12	Lake Flower (10), St. Lawrence River (1), Tupper Lake (1)	75	Lake Flower
zebra mussel	3	Lake Champlain (1), Mohawk River (1), <i>None</i> (1)	0	N/A
<b>Totals</b>	<b>25</b>		<b>96</b>	

Previous Waterways for Launching Boats	# visits
Lake Flower	498
NONE	323
Upper Saranac Lake	70
Lake Placid	66
Lower Saranac Lake	49
Lake Champlain	38
Second Pond	33
DID NOT ASK	29
RENTAL	27
Lake Kushaqua (Rainbow/Buck)	16
UNKNOWN (boater doesn't know)	15
Tupper Lake	13
Hudson River	10
Chateaugay Lake	9
Osgood Pond	8
Lake Colby	7
Atlantic Ocean	6
Kiawassa Lake	6
St. Lawrence River	6
Upper St Regis Lake	6
Black Lake	5
Fish Creek Ponds	5
Great Sacandaga Lake	5
Saranac River	5
Lake George	4
Long Lake	4
Meacham Lake	4
Middle Saranac Lake	4
Mirror Lake	4
Mohawk River	4

Previous Waterways for Launching Boats	# visits
Saratoga Lake	4
Cayuga Lake	3
Cranberry Lake	3
Oneida Lake	3
Schroon Lake	3
St. Regis River	3
Carry Falls Reservoir	2
Chazy Lake	2
Connecticut River	2
Lake Clear	2
Lake Dunmore, Salisbury, VT	2
Lake Erie	2
Lake Ontario	2
Lower St Regis Lake	2
Polliwog Ponds	2
Raquette River	2
Seneca Lake	2
Ausable River	1
Ballston Lake	1
Bantam Lake, Morris, CT	1
Brant Lake	1
Burden Lake, Rensselaer County, NY	1
Canada Lake	1
Canandaigua Lake	1
Caroga Lake	1
Cazenovia Lake	1
Church Pond, Brighton, NY	1
Conesus Lake	1
Crystal Lake, Henderson, NY	1
Delaware River	1

Previous Waterways for Launching Boats	# visits
Erie Canal	1
Fern Lake, Black Brook, NY	1
Franklin Falls Flow	1
Goodyear Lake, Milford, NY	1
Grant Lake, Benson, NY	1
Higley Falls Reservoir (Higley Flow)	1
Indian Lake	1
Jones Pond, Brighton, NY	1
Lake Nipissing, ON	1
Lamoille River, VT	1
Little Clear Pond	1
Loon Lake, Franklin, NY	1
Moose River	1
Mountain View Lake	1
Otsego Lake	1
Paradox Lake	1
Raquette Lake	1
Salmon River	1
Schuylkill River, PA	1
Silver Lake, Madison, NH	1
somewhere in Canada	1
somewhere in Maine	1
Spruce Run Reservoir, NJ	1
Star Lake	1
Stillwater Reservoir	1
Susquehanna River	1
Swinging Bridge Reservoir	1
Trent River, ON	1
Warner Lake, Berne, NY	1
Winooski River, VT	1
<b>Total groups</b>	<b>1363</b>

State of Motorized Boat Registration  
(n=1,846)

