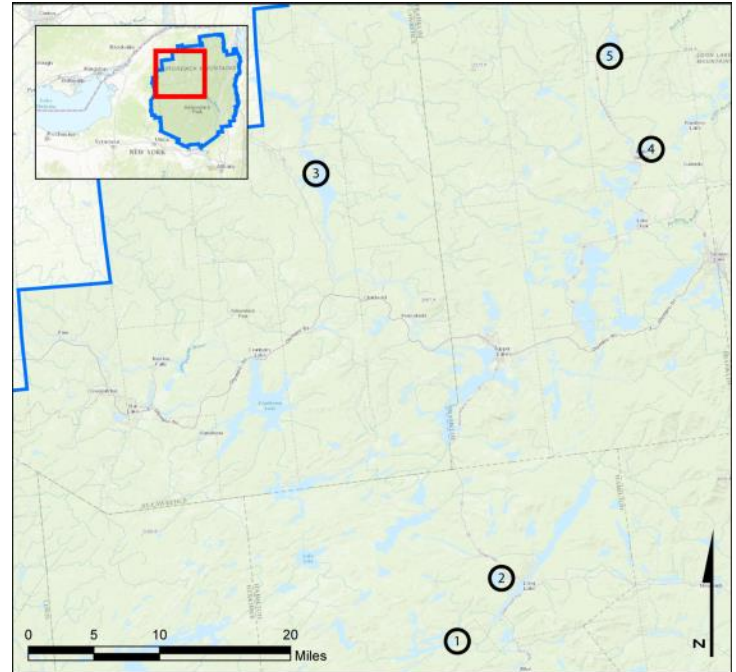


GLRI North Lakes

AIS intercepted: 5
Boats inspected: 2,613
Number of visitors: 3,731
Boats failing inspection: 15.6%
Visitors showing spread prevention awareness: 58%
Number of previously visited waterways: 117

AIS Present in Waterbodies: Eurasian watermilfoil (Meacham), variable-leaf milfoil (Carry Falls, Forked)

Funding: Great Lakes Restoration Initiative (US EPA)



1-Forked Lake; 2-Lake Eaton; 3-Carry Falls Reservoir; 4-Osgood Pond; 5-Meacham Lake

Watercraft	Boat Type									total # boats observed	total # boats inspected
	Barge	Canoe	Dock	Kayak	Motor	PWC	Row	Sail	SUP		
Carry Falls Reservoir	0	25	0	83	280	8	0	11	0	407	399
percentage of total boats	0%	6%	0%	20%	69%	2%	0%	3%	0%	100%	98%
Forked Lake	0	228	0	268	74	1	15	2	11	599	599
percentage of total boats	0%	38%	0%	45%	12%	0%	3%	0%	2%	100%	100%
Lake Eaton	0	76	0	177	120	10	4	2	3	392	392
percentage of total boats	0%	19%	0%	45%	31%	3%	1%	1%	1%	100%	100%
Meacham Lake	0	15	0	92	349	35	4	1	0	496	496
percentage of total boats	0%	3%	0%	19%	70%	7%	1%	0%	0%	100%	100%
Osgood Pond	0	246	0	412	57	0	5	0	7	727	727
percentage of total boats	0%	34%	0%	57%	8%	0%	1%	0%	1%	100%	100%
totals	0	590	0	1032	880	54	28	16	21	2621	2613
percentage of total boats	0%	23%	0%	39%	34%	2%	1%	1%	1%	100%	100%

Boats observed at launch, including those not inspected. PWC=personal watercraft, SUP=stand-up paddleboard.

	total # visitors	organisms found			total organisms	# boats dirty	# boats w/AIS	# of inspections	% of inspected boats dirty	% of inspected boats w/AIS
		entering	leaving	roadside						
Carry Falls Reservoir	955	6	1	0	7	6	0	399	1.5%	0.0%
Forked Lake	978	4	12	0	16	10	3	599	1.7%	0.5%
Lake Eaton	651	32	31	0	63	53	0	392	13.5%	0.0%
Meacham Lake	1104	21	14	0	35	32	1	496	6.5%	0.2%
Osgood Pond	1021	151	182	0	333	223	1	727	30.7%	0.1%
totals	3731	210	228	0	438	314	2	2014	15.6%	0.1%

Boats dirty = watercraft with any organic material, invasive, non-invasive or unknown.

Visitor Responses	AIS spread prevention awareness											# groups asked
	yes	I	WB	DB	BB	LW	Dis	Dry	same lake	first/frozen	didn't ask	
Carry Falls Reservoir	177	37	61	24	6	9	2	12	28	67	43	317
percentage of total groups asked	56%	12%	19%	8%	2%	3%	1%	4%	9%	21%	NA	
Forked Lake	112	8	32	3	1	2	0	12	26	48	0	338
percentage of total groups asked	33%	2%	9%	1%	0%	1%	0%	4%	8%	14%	NA	
Lake Eaton	227	96	50	42	0	1	1	47	25	72	2	282
percentage of total groups asked	80%	34%	18%	15%	0%	0%	0%	17%	9%	26%	NA	
Meacham Lake	263	70	159	30	0	4	0	22	16	49	31	408
percentage of total groups asked	64%	17%	39%	7%	0%	1%	0%	5%	4%	12%	NA	
Osgood Pond	236	79	99	5	1	1	0	96	18	40	12	392
percentage of total groups asked	60%	20%	25%	1%	0%	0%	0%	24%	5%	10%	NA	
totals	1015	290	401	104	8	17	3	189	113	276	88	1737
percentage of total groups asked	58%	17%	23%	6%	0%	1%	0%	11%	7%	16%	NA	

Yes = showed AIS spread prevention awareness; I = inspected boat; WB = washed boat; DB = drained bilge; BB = emptied bait bucket; LW = drained livewell; Dis = disposed of unused bait; Dry = dried boat; same Lake = boat only goes in this lake; first/frozen = first launch of season or frozen boat.

Organisms Removed																	total # AIS
	BW	CLP*	ELO	GRS	EWM*	NM	UM	VLM*	MUD	NON	PND	SWF*	WC*	WL	ZM*	OTR	
Carry Falls Reservoir	0	0	0	0	0	0	1	0	3	0	1	0	0	0	0	2	0
percentage of total orgs	0%	0%	0%	0%	0%	0%	14%	0%	43%	0%	14%	0%	0%	0%	0%	29%	
Forked Lake	0	0	0	8	0	0	1	3	0	2	0	0	0	2	0	0	3
percentage of total orgs	0%	0%	0%	50%	0%	0%	6%	19%	0%	13%	0%	0%	0%	13%	0%	0%	
Lake Eaton	0	0	0	1	0	0	0	0	26	28	7	0	0	1	0	0	0
percentage of total orgs	0%	0%	0%	2%	0%	0%	0%	0%	41%	44%	11%	0%	0%	2%	0%	0%	
Meacham Lake	0	0	10	3	1	0	0	0	1	18	2	0	0	0	0	0	1
percentage of total orgs	0%	0%	29%	9%	3%	0%	0%	0%	3%	51%	6%	0%	0%	0%	0%	0%	
Osgood Pond	1	0	0	51	1	1	0	0	66	189	11	0	0	8	0	5	1
percentage of total orgs	0%	0%	0%	15%	0%	0%	0%	0%	20%	57%	3%	0%	0%	2%	0%	2%	
totals	1	0	10	63	2	1	2	3	96	237	21	0	0	11	0	7	5
percentage of total orgs	0%	0%	2%	14%	0%	0%	0%	1%	21%	52%	5%	0%	0%	2%	0%	2%	

BW = bladderwort; CLP = curly-leaf pondweed; ELO = elodea; GRS = grass; EWM = Eurasian watermilfoil; NM = native milfoil; UM = unknown milfoil; VLM = variable-leaf milfoil; MUD = mud; NON = non-aquatic debris; PND = native pondweed; SWF = spiny waterflea; WC = water chestnut; WL = water lily; ZM = zebra mussel; OTR = other; */AIS = aquatic invasive species.

Aquatic Invasive Species Intercepted by Stewards	# found on boats launching	Previous Waterway	# found on boats retrieving	Previous Waterway
Eurasian watermilfoil	1	<u>Meacham Lake</u> : Deer River Flow (1)	1	Osgood Pond (unknown previous lake)
variable-leaf milfoil	0	N/A	3	Forked Lake (3)
Totals	1		4	

Location	First Day	Last Day	Total Days
Carry Falls Reservoir	27 May	1 Oct	67
Forked Lake	3 June	19 Aug	25
Lake Eaton	26 May	4 Sept	80
Meacham Lake	26 May	8 Oct	88
Osgood Pond	27 May	6 Oct	88

