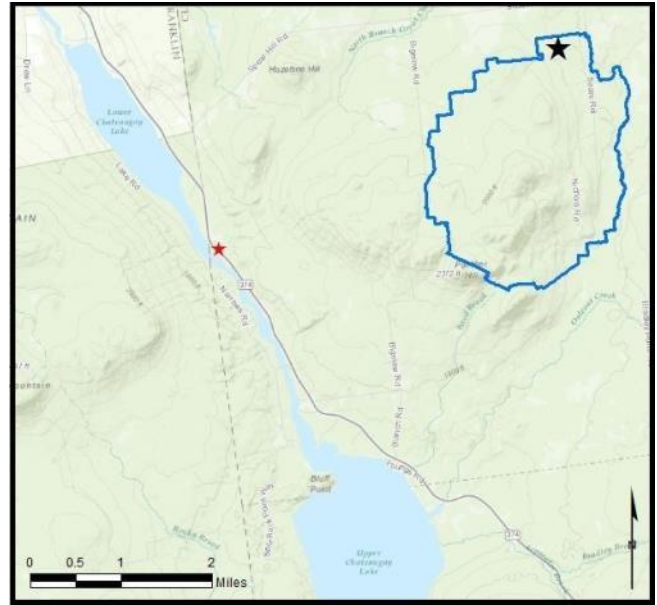


## Chateaugay Lake

**AIS intercepted:** 310  
**Boats inspected:** 2,092  
**Dates of Operation:** May 26 – October 9  
**Number of visitors:** 4,636  
**Boats failing inspection:** 30.8%

**Total Number of Days Covered:** 115  
**Weekly Coverage:** 7 days  
**Visitors showing spread prevention awareness:** 86%  
**Number of previously visited waterways:** 53

**AIS Present in Waterbody:** Eurasian watermilfoil, curly-leaf pondweed  
**Stewardship History:** 2012 – present  
**Partnership:** Chateaugay Lakes Association



Watercraft	Boat Type									total # boats observed	total # boats inspected
	Barge	Canoe	Dock	Kayak	Motor	PWC	Row	Sail	SUP		
# of boats observed	0	24	0	289	1538	239	5	6	3	2104	2092
percentage of total boats	0%	1%	0%	14%	73%	11%	0.2%	0.3%	0.1%	100%	99%

Boats observed at launch, including those not inspected. PWC=personal watercraft, SUP=stand-up paddleboard.

total # visitors	organisms found		total organisms	# boats dirty	# boats w/AIS	# of inspections	% of inspected boats dirty	% of inspected boats w/AIS
	entering	leaving						
4636	366	817	1183	645	294	2092	30.8%	14.1%

Boats dirty = watercraft with any organic material, invasive, non-invasive or unknown.

Visitor Responses	AIS spread prevention awareness											# groups asked
	yes	I	WB	DB	BB	LW	Dis	Dry	same lake	first/frozen	didn't ask	
# of groups	1672	662	397	536	7	53	2	250	319	387	29	1947
percentage of total groups asked	86%	34%	20%	28%	0.4%	3%	0.1%	13%	16%	20%	NA	

Yes = showed AIS spread prevention awareness; I = inspected boat; WB = washed boat; DB = drained bilge; BB = emptied bait bucket; LW = drained livewell; Dis = disposed of unused bait; Dry = dried boat; same Lake = boat only goes in this lake; first/frozen = first launch of season or frozen boat.

Organisms Removed																	total # AIS
	BW	CLP*	ELO	GRS	EWM*	NM	UM	VLM*	MUD	NON	PND	SWF*	WC*	WL	ZM*	OTR	
# of organisms	11	21	174	231	280	4	1	8	193	158	68	0	1	13	0	20	310
percentage of total orgs	1%	2%	15%	20%	24%	0.3%	0.1%	1%	16%	13%	6%	0%	0.1%	1%	0%	2%	

BW = bladderwort; CLP = curly-leaf pondweed; ELO = elodea; GRS = grass; EWM = Eurasian watermilfoil; NM = native milfoil; UM = unknown milfoil; VLM = variable-leaf milfoil; MUD = mud; NON = non-aquatic debris; PND = native pondweed; SWF = spiny waterflea; WC = water chestnut; WL = water lily; ZM = zebra mussel; OTR = other; \*/AIS = aquatic invasive species.

Aquatic Invasive Species Intercepted by Stewards	# found on boats launching	Previous Waterway	# found on boats retrieving	Previous Waterway
curly-leaf pondweed	0	N/A	21	Chateaugay Lake
Eurasian watermilfoil	45	Chateaugay Lake (33), None (5), Did Not Ask (2), Lake Champlain (2), Mountain View Lake (1), St. Lawrence River (1), Budd Lake NJ (1)	235	Chateaugay Lake
variable-leaf milfoil	2	Chateaugay Lake (2)	6	Chateaugay Lake
water chestnut	1	Chateaugay Lake (previously in Massachusetts)	0	N/A
<b>Totals</b>	<b>48</b>		<b>262</b>	

Previous Waterways for Launching Boats	# visits
Chateaugay Lake	599
NONE	461
Lake Champlain	84
Chazy Lake	44
UNKNOWN (boater doesn't know)	23
St. Lawrence River	11
DID NOT ASK	10
Meacham Lake	10
Upper Saranac Lake	8
Mountain View Lake	5
Saranac River	5
Upper St Regis Lake	5
Black Lake	4
Cranberry Lake	4
Fern Lake, Black Brook, NY	4
Indian Lake	4
Lower Saranac Lake	4
Deer River Flow, Duane, NY	3
Fish Creek Ponds	3
Barnum Pond	2

Previous Waterways for Launching Boats	# visits
Franklin Falls Flow	2
Lake Flower	2
Lake George	2
Lake Kushaqua (Rainbow/Buck)	2
Lake Ontario	2
Lake Titus, Malone, NY	2
Long Lake	2
RENTAL	2
Saratoga Lake	2
St. Regis River	2
Taylor Pond	2
Atlantic Ocean	1
Budd Lake, Mount Olive Township, NJ	1
Canadarago Lake	1
Carry Falls Reservoir	1
Clear Pond, Duane, NY	1
Clyde River, Orleans County, VT	1
Congamond Lakes, Southwick, MA	1
Cross Lake, Onondaga County, NY	1

Previous Waterways for Launching Boats	# visits
Flagstaff Lake, NW Somerset, ME	1
Horseshoe Lake	1
Hudson River	1
Lake Colby	1
Lake Huron	1
Lake Placid	1
Little Salmon River, Fort Covington, NY	1
Mirror Lake	1
Oseetah Lake	1
Osgood Pond	1
Oswegatchie River	1
Raquette Lake	1
Raquette River	1
Silver Lake, Madison, NH	1
Skaneateles Lake	1
Spitfire Lake	1
Suwannee River, FL	1
Tupper Lake	1
Union Falls Pond	1
<b>Total groups</b>	<b>1342</b>

State of Motorized Boat Registration  
(n=1761)

