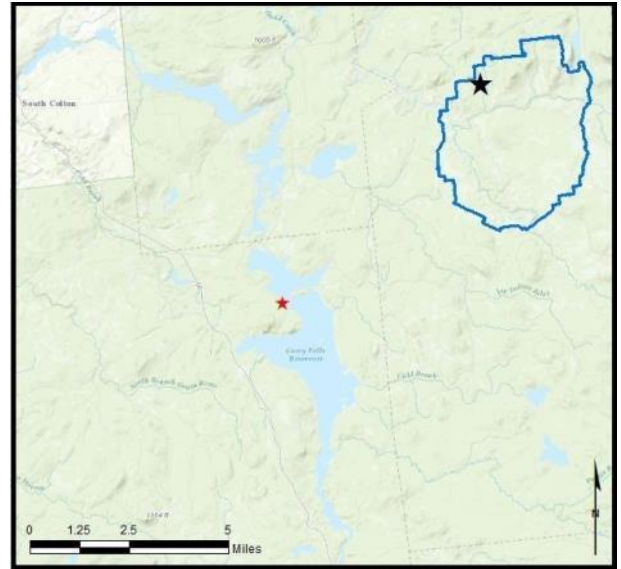


## Carry Falls Reservoir

**AIS intercepted:** 0  
**Boats inspected:** 399  
**Dates of Operation:** May 27 – Oct 1  
**Number of visitors:** 955  
**Boats failing inspection:** 1.5%

**Total Number of Days Covered:** 67  
**Weekly Coverage:** 5 days  
**Visitors showing spread prevention awareness:** 56%  
**Number of previously visited waterways:** 22

**AIS Present in Waterbody:** variable-leaf milfoil  
**Stewardship History:** 2015 - present



Watercraft	Boat Type									total # boats observed	total # boats inspected
	Barge	Canoe	Dock	Kayak	Motor	PWC	Row	Sail	SUP		
# of boats observed	0	25	0	83	280	8	0	11	0	407	399
percentage of total boats	0%	6%	0%	20%	69%	2%	0%	3%	0%	100%	98%

Boats observed at launch, including those not inspected. PWC=personal watercraft, SUP=stand-up paddleboard.

total # visitors	organisms found		total organisms	# boats dirty	# boats w/AIS	# of inspections	% of inspected boats dirty	% of inspected boats w/AIS
	entering	leaving						
955	6	1	7	6	0	399	1.5%	0%

Boats dirty = watercraft with any organic material, invasive, non-invasive or unknown.

Visitor Responses	AIS spread prevention awareness											# groups asked
	yes	I	WB	DB	BB	LW	Dis	Dry	same lake	first/frozen	didn't ask	
# of groups	177	37	61	24	6	9	2	12	28	67	43	317
percentage of total groups asked	56%	12%	19%	8%	2%	3%	1%	4%	9%	21%	NA	

Yes = showed AIS spread prevention awareness; I = inspected boat; WB = washed boat; DB = drained bilge; BB = emptied bait bucket; LW = drained livewell; Dis = disposed of unused bait; Dry = dried boat; same Lake = boat only goes in this lake; first/frozen = first launch of season or frozen boat.

Organisms Removed																	total # AIS
	BW	CLP*	ELO	GRS	EWM*	NM	UM	VLM*	MUD	NON	PND	SWF*	WC*	WL	ZM*	OTR	
# of organisms	0	0	0	0	0	0	1	0	3	0	1	0	0	0	0	2	0
percentage of total orgs	0%	0%	0%	0%	0%	0%	14%	0%	43%	0%	14%	0%	0%	0%	0%	29%	

BW = bladderwort; CLP = curly-leaf pondweed; ELO = elodea; GRS = grass; EWM = Eurasian watermilfoil; NM = native milfoil; UM = unknown milfoil; VLM = variable-leaf milfoil; MUD = mud; NON = non-aquatic debris; PND = native pondweed; SWF = spiny waterflea; WC = water chestnut; WL = water lily; ZM = zebra mussel; OTR = other; \*/AIS = aquatic invasive species.

Previous Waterways for Launching Boats	# visits	Previous Waterways for Launching Boats	# visits
NONE	102	Fish Creek Ponds	1
Carry Falls Reservoir	80	Hinckley Reservoir	1
Higley Falls Reservoir (Higley Flow)	9	Lake Clear	1
Blake Falls Reservoir	8	Lake Ozonia, Hopkinton, NY	1
Stark Falls Reservoir	6	Long Lake	1
Cranberry Lake	5	Meacham Lake	1
DID NOT ASK	5	Norwood Lake, Potsdam, NY	1
Raquette River	5	Saranac River	1
St. Lawrence River	4	Seneca Lake	1
Oswegatchie River	3	St. Regis River	1
Upper Saranac Lake	3	Tupper Lake	1
Grasse River	2	Upper St Regis Lake	1
Bog River	1	<b>Total groups</b>	<b>245</b>

State of Motorized Boat Registration  
(n=293)

