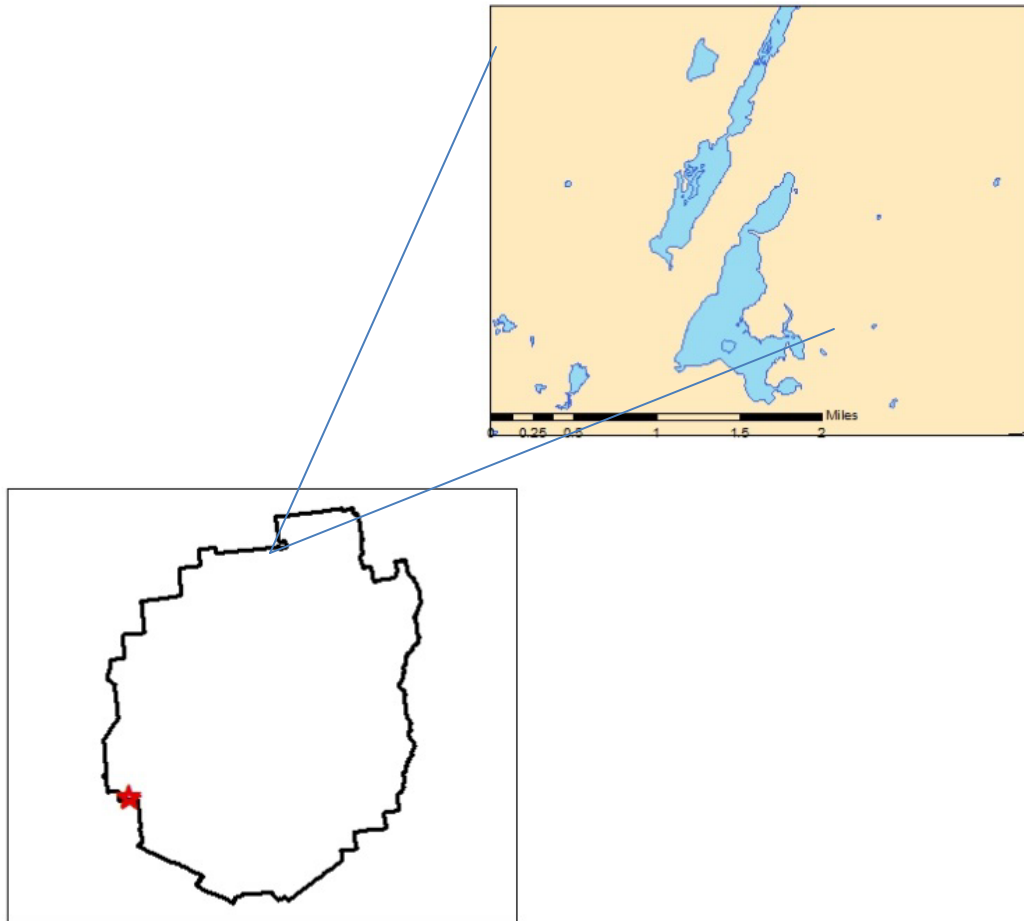


White Lake Aquatic Plant Survey 2013



Map 1: Location of White Lake in relation to the Adirondack Park.

White Lake is located in the Town of Forestport in Oneida County, New York (Map 1). This 224 acre lake was accessed through the use of a public boat launch on Route 30. Motor boats can have access to this lake through the use of this boat launch.

An aquatic plant survey was conducted at White Lake on 30 July, 2013. Aquatic plant coverage was moderate, and was comprised of 23 plant beds that covered 44 acres or 19% of the lakes surface area. No invasive aquatic plants were detected in this survey. Fourteen species of native aquatic plants were identified. Species most common in this lake were Pipewort (*Eriocaulon spp.*) and White Water Lily (*Nymphaea odorata*) (Table 1).

Of the 31 rake tosses deployed through the littoral zone of this lake, four had plants recovered. There were two plant species that were brought up on the rake that were not detected during the surface survey. These species were Brittlewort (*Nitella spp.*) and Common Bladderwort (*Utricularia vulgaris*) (Table 2).

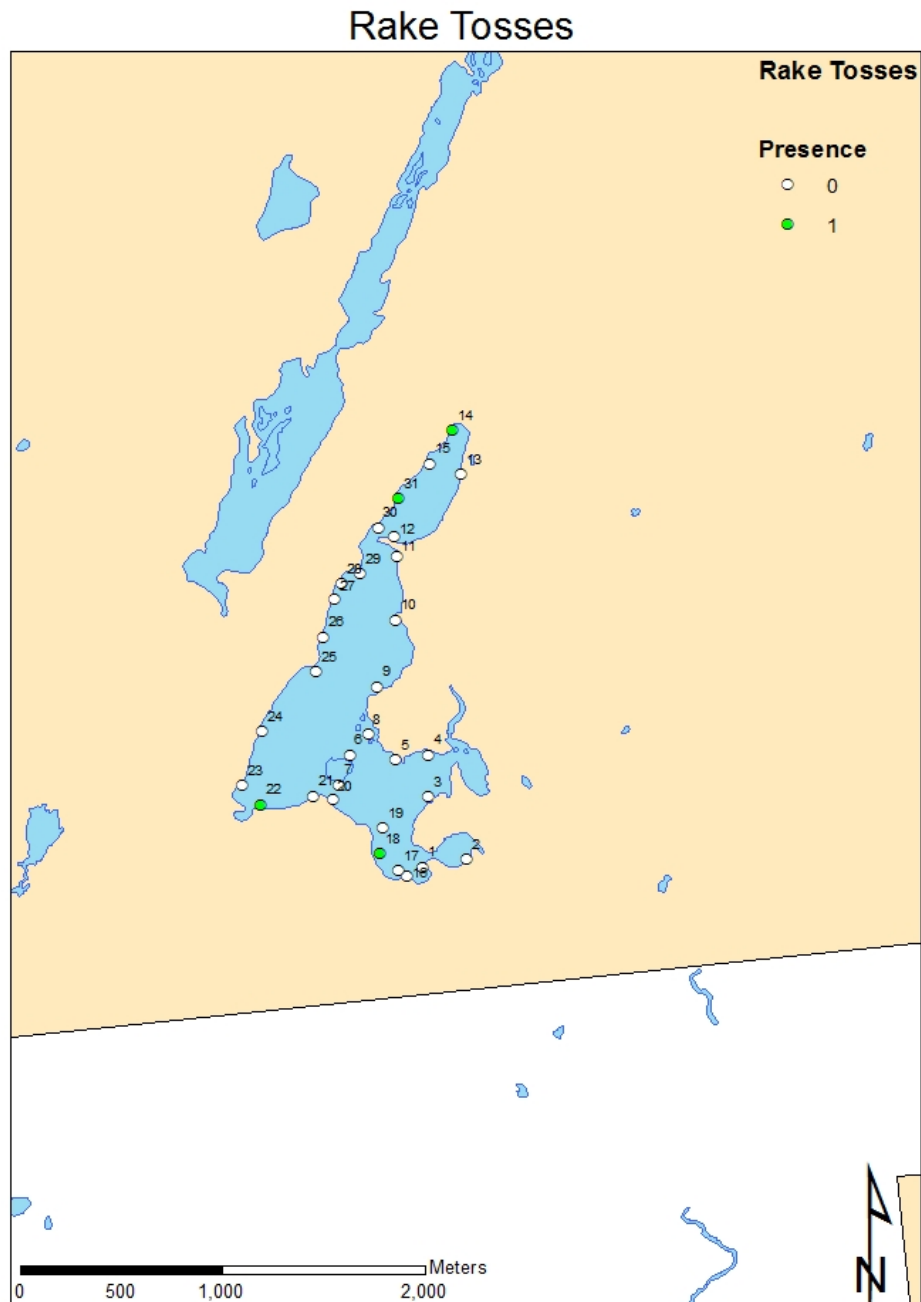
Table 1: Abundance and area of aquatic plant beds in White Lake. Refer to Map 3 for plant bed locations. Abundance key: 1=RARE (<5%), 2=OCCASIONAL (6-15%), 3=PRESENT (16-25%), 4=COMMON(26-50%), 5=ABUNDANT(>50%). Species codes are defined on the next page.

Bed #	BRSC	POAM	POEP	NYOD	UTPU	SPSP	NUVA	SAGR	ELSP	POPU	ERSP	LODO	Area (acres)
1	3	3		2					3	2	2	3	1.57
2	2		2	3	1						2	3	15.95
3											2	2	0.64
4	3	2	2	4				1	1		1	1	16.65
5	2	4		1			1	1	1		2	1	0.6
6				2							3	2	0.36
7			1	1							1		0.49
8		2	1	1							1	1	0.52
9		1	2	2			1	1		1	2	1	1.04
10				1							2	1	0.05
11				4									0.12
12		1									2		0.23
13				1							1		0.59
14		1	1	1		1					1	1	1.29
15													0.21
16													0.08
17				2									0.13
18				1							1		0.27
19				1							1	1	0.07
20				1							1	1	0.2
21		2		1							1	1	0.78
22			1	1							1		0.67
23		3		3							1		1.37

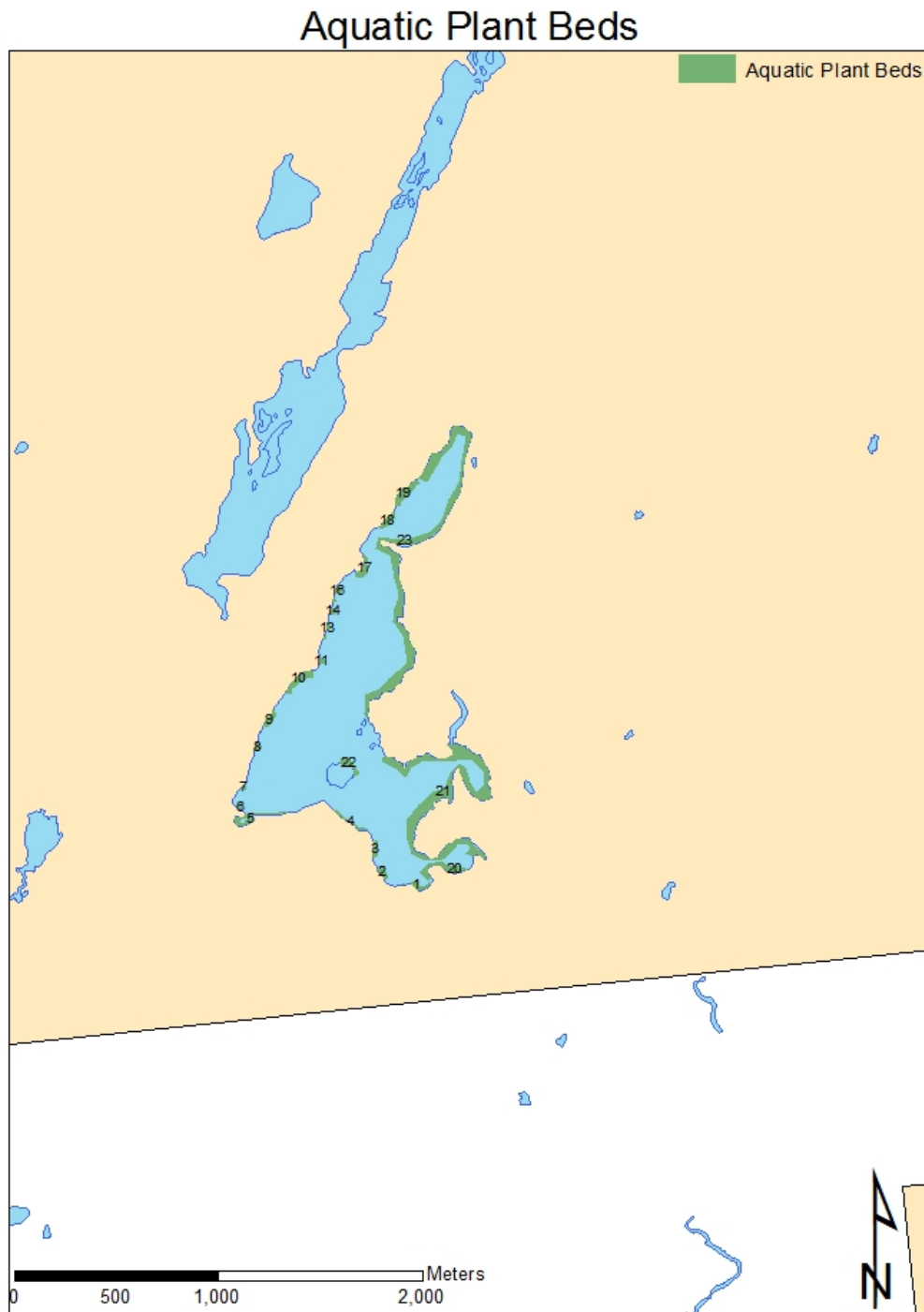
<u>Code</u>	<u>Species</u>
BRSC	Water Shield (<i>Brasenia schreberi</i>)
POAM	Largeleaf Pondweed (<i>Potamogeton amplifolius</i>)
POEP	Ribbon Leaf Pondweed (<i>Potamogeton epihydrus</i>)
NYOD	White Water Lily (<i>Nymphaea odorata</i>)
UTPU	Purple Bladderwort (<i>Utricularia purpurea</i>)
SPSP	Bur-Reed (<i>Sparganium spp.</i>)
NUVA	Yellow Water Lily (<i>Nuphar variegata</i>)
SAGR	Grassy Arrowhead (<i>Sagittaria graminea</i>)
ELSP	Hairgrass (<i>Eleocharis spp.</i>)
POPU	Small Pondweed (<i>Potamogeton pusillus</i>)
ERSP	Pipewort (<i>Eriocaulon spp.</i>)
LODO	Water Lobelia (<i>Lobelia dortmanna</i>)

Table 2: Species present on the rake, abundance, and depth at each of the rake toss locations that had plants recovered at White Lake. Refer to Map 2 for rake toss locations. Abundance key: 1=RARE (<5%), 2=OCCASIONAL (6-15%), 3=PRESENT (16-25%), 4=COMMON (26-50%), 5=ABUNDANT (>50%).

Rake Toss #	Brittlewort (<i>Nitella spp.</i>)	Common Bladderwort (<i>Utricularia vulgaris</i>)	Pipewort (<i>Eriocaulon spp.</i>)	Purple Bladderwort (<i>Utricularia purpurea</i>)	Depth (ft)
14			1		5
18	1				7
22		1		1	10
31		1			13



Map 2: Rake toss locations on White Lake on 30 July, 2013. Open circles represent locations where no plants were detected, closed circles represent locations where plants were encountered on the rake. Data for rake tosses can be found on Table 2.



Map 3: Locations of the aquatic plant beds detected in White Lake during the surface survey on 30 July, 2013. Data for plant beds can be found on Table 1.