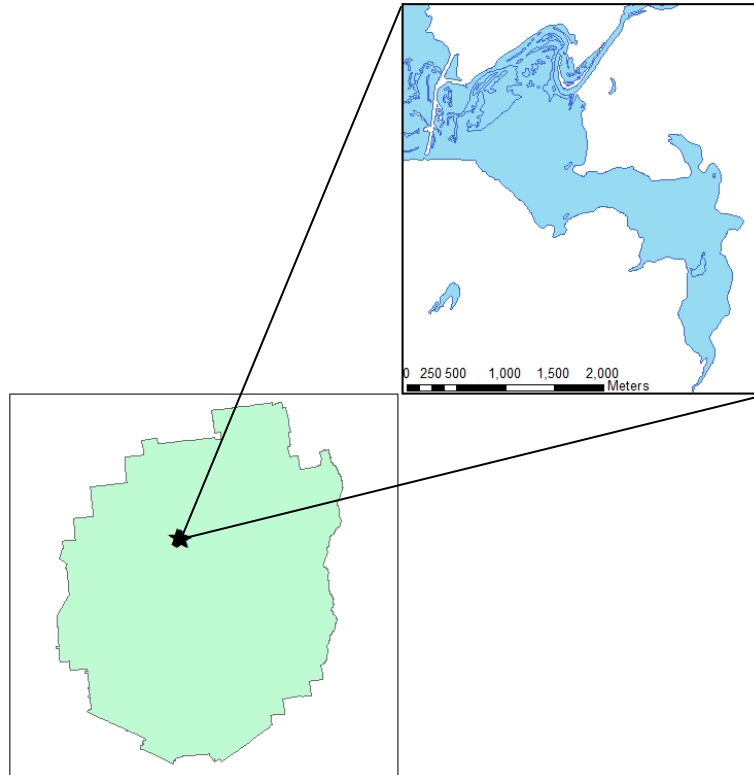


Simon Pond Aquatic Plant Survey 2013



Map 1: Location of Simon Pond in relation to the Adirondack Park.

Simon Pond is located in the Town of Tupper Lake in the southwest corner of Franklin County, New York (Map 1). This 689 acre lake was accessed through Tupper Lake via the use of a public boat launch on Route 30. Motor boats can have access to this lake through the use of this boat launch.

An aquatic plant survey was conducted at Simon Pond on 16 July 2013. Aquatic plant coverage was moderate and was comprised of 10 plant beds that covered 367 acres or 53% of the lake's surface area. The aquatic invasive species, Variable-leaf milfoil, was detected in Simon Pond. This invasive species was present throughout the pond. Fourteen species of native aquatic plants were identified. Species most common in this pond were Water Shield (*Brasenia schreberi*), Yellow Water Lily (*Nuphar variegata*), and Yellow floating heart (*Nymphoides peltata*) (Table 1).

Of the 28 rake tosses deployed through the littoral zone of this lake, 10 had plants recovered. There was no plant species brought up on the rake that was not detected during the surface survey (Table 2).

Table 1: Abundance and area of aquatic plant beds in Simon Pond. Refer to Map 3 for plant bed locations. Abundance key: 1=RARE (<5%), 2=OCCASIONAL (6-15%), 3=PRESENT (16-25%), 4=COMMON(26-50%), 5=ABUNDANT(>50%). Species codes are defined below the table.

Bed #	BRSC	POEP	POPE	POPR	NYOD	NISP	SPSP	NUVA	UTVU	MYHE	POGR	ELSP	UTPU	NYPE	Area (acres)
1	4	2	2	2	3	1	4	2		1			1	1	26.85
2					1			2							0.4
3	2						1								0.1
4	1	1	2				1								2.77
5	4	1		1	2		3	1				1		1	40.57
6	4	2	3				4							1	6.96
7	1	1	1				2								8.06
8	1	2	2		2			1		2				1	12.94
9	2	1		1	2		2		1				1	4	23.37
10	2				4		2	3		2	2	4		3	245.45

Code Species

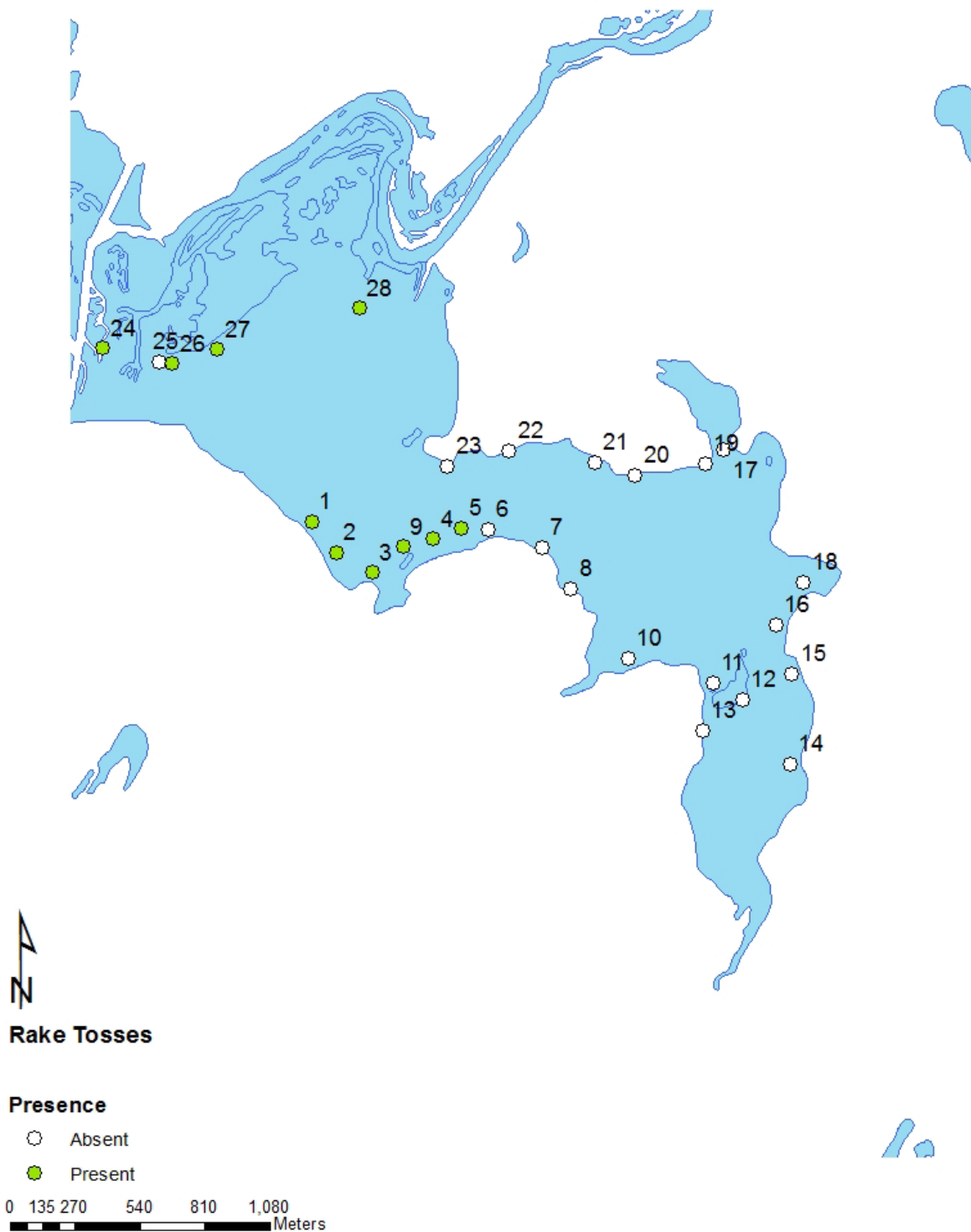
BRSC Watershield (*Brasenia schreberi*)
 POEP Ribbon-leaf Pondweed (*Potamogeton epihydrus*)
 POPE Claspig Leaf Pondweed (*Potamogeton perfoliatus*)
 POPR White stemmed Pondweed (*Potamogeton praelongus*)
 NYOD White Water Lily (*Nymphaea odorata*)
 NISP Brittlewort (*Nitella spp.*)
 SPSP Bur-Reed (*Sparganium spp.*)

Code Species

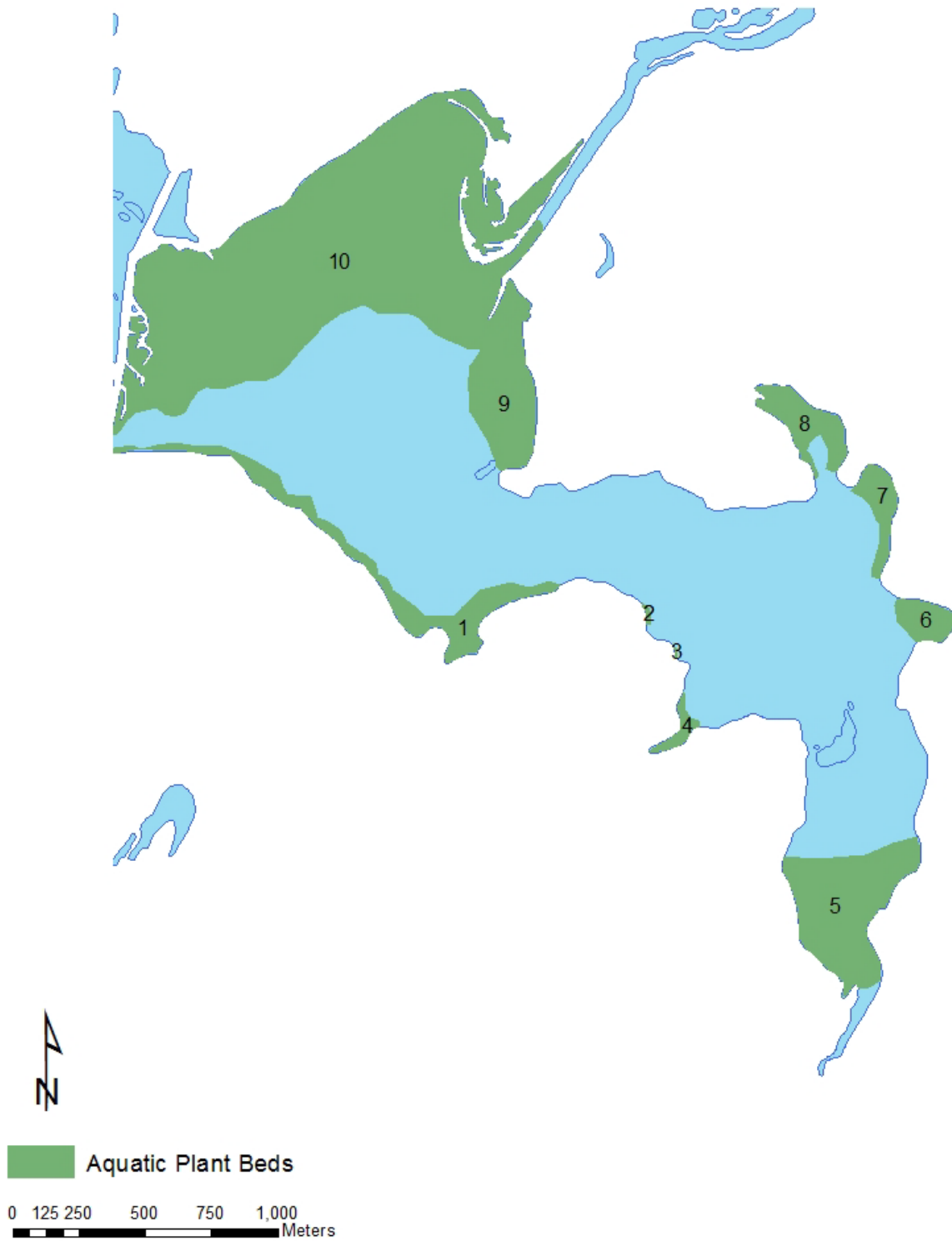
NUVA Yellow Water Lily (*Nuphar variegata*)
 UTVU Common bladderwort (*Utricularia vulgaris*)
 MYHE Variable-leaf Milfoil (*Myriophyllum heterophyllum*)
 POGR Variable-leaf pondweed (*Potamogeton gramineus*)
 ELSP Hairgrass (*Eleocharis sp.*)
 UTPU Purple Bladderwort (*Utricularia purpurea*)
 NYPE Yellow Floatingheart (*Nymphoides peltata*)

Table 2: Species present on the rake, abundance, and depth at each of the rake toss locations that had plants recovered at Simon Pond. Refer to Map 2 for rake toss locations. Abundance key: 1=RARE (<5%), 2=OCCASIONAL (6-15%), 3=PRESENT (16-25%), 4=COMMON (26-50%), 5=ABUNDANT (>50%).

Rake Toss #	Ribbon-Leaf Pondweed (<i>Potamogeton epihydrus</i>)	Brittlewort (<i>Nitella</i> spp.)	Bur-reed (<i>Sparganium</i> spp.)	Common Bladderwort (<i>Utricularia vulgaris</i>)	Variable-Leaf Milfoil (<i>Myriophyllum heterophyllum</i>)	Hairgrass (<i>Eleocharis</i> spp.)	Purple Bladderwort (<i>Utricularia purpurea</i>)	Depth (ft)
1					1		1	5
2						2	3	5
3						1		6
4							1	7
5		1					1	10
9	1	1					3	7
24						3		14
26			2			2		5
27		1						6
28				1				5



Map 2: Rake toss locations on Simon Pond on 16 July, 2013. Open circles represent locations where no plants were detected, closed circles represent locations where plants were encountered on the rake. Data for rake tosses can be found on Table 2.



Map 3: Locations of the aquatic plant beds detected in Simon Pond during the surface survey from 16 July, 2013. Data for plant beds can be found on Table 1.