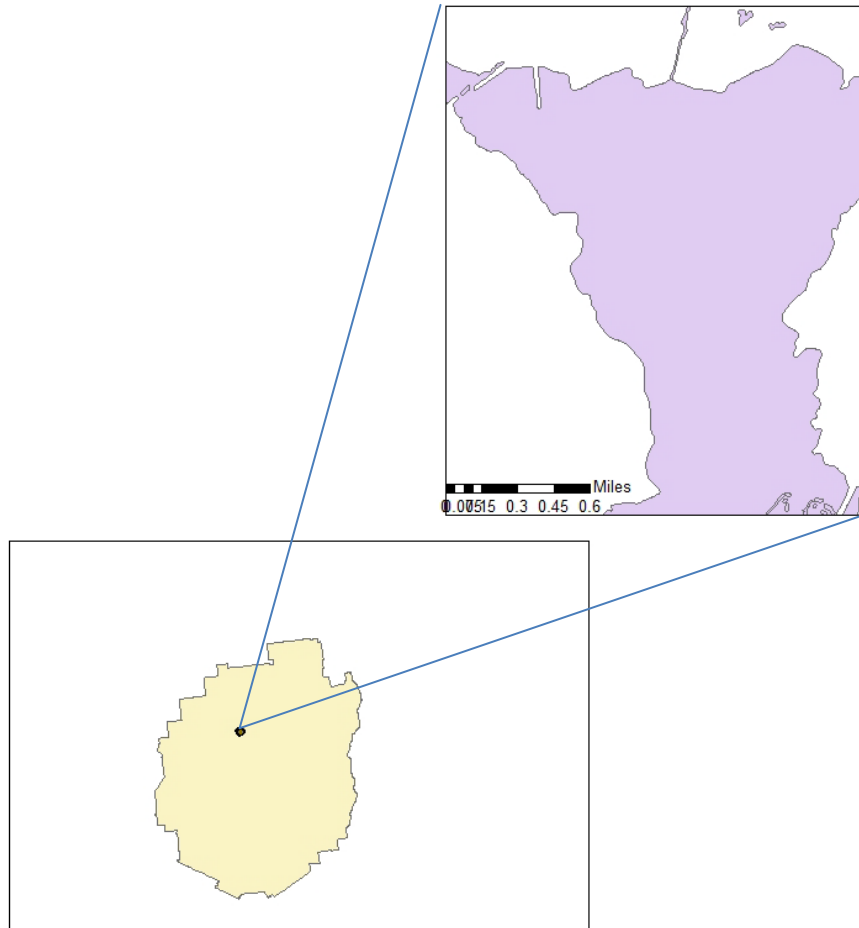


# Raquette Pond Aquatic Plant Survey 2013



**Map 1:** Location of Raquette Pond in relation to the Adirondack Park.

Raquette Pond is located in the Town of Tupper Lake in the southwest corner of Franklin County, New York (Map 1). Raquette Pond is the northeast section of Tupper Lake. This 1,222 acre section of the 3,853 acre lake was accessed through the use of a public boat launch on Route 30. Motor boats can have access to this lake through the use of this boat launch.

An aquatic plant survey was conducted at Raquette Pond on 16 July 2013. Aquatic plant coverage was high, and was comprised of two large plant beds that covered 1060 acres or 87% of the lakes surface area. The invasive aquatic species, Variable-leaf milfoil, was detected in the pond, and was common throughout the plant beds. Ten species of native aquatic plants were identified during this survey. Species most common in this pond were Water Shield (*Brasenia schreberi*), White Water Lily (*Nymphaea odorata*), Hairgrass (*Eleocharis spp.*), and Yellow floatingheart (*Nymphoides pelata*)(Table 1).

Of the 22 rake tosses deployed through the littoral zone of this lake, 11 had plants recovered. There were no plant species brought up on the rake that were not detected during the surface survey.

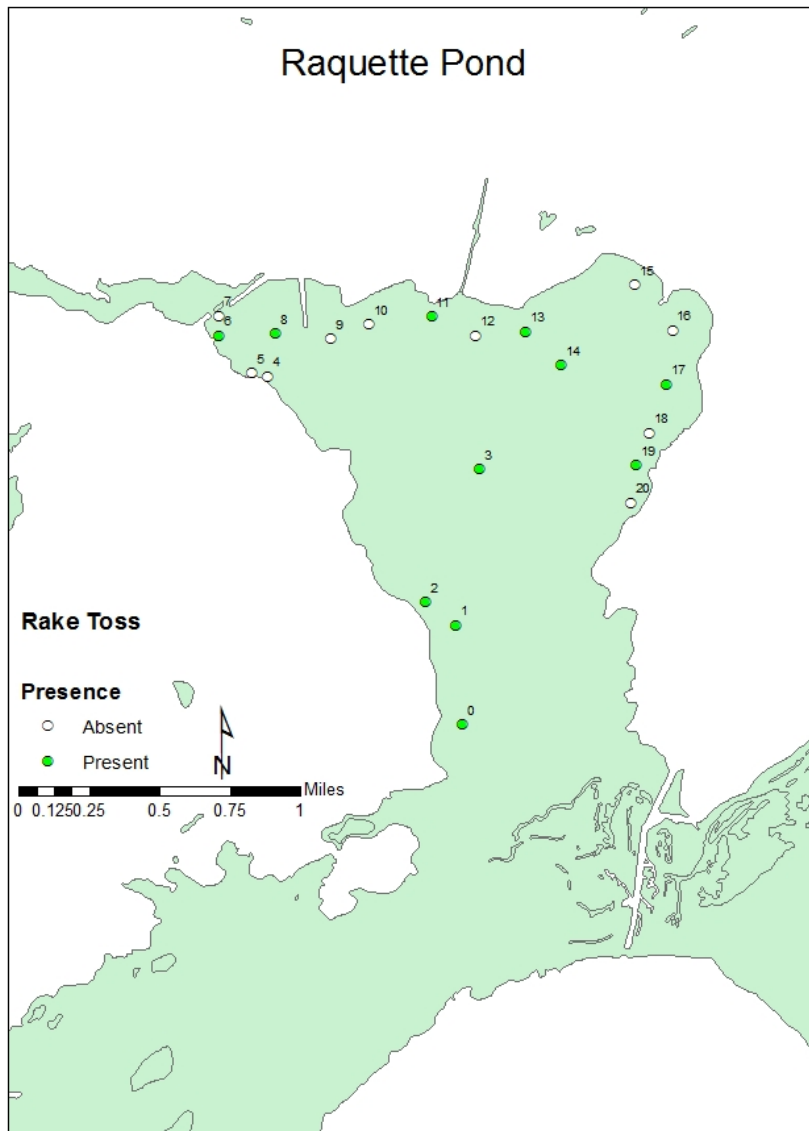
**Table 1:** Abundance and area of aquatic plant beds in Raquette Pond. Refer to Map 3 for plant bed locations. Abundance key: 1=RARE (<5%), 2=OCCASIONAL (6-15%), 3=PRESENT (16-25%), 4=COMMON(26-50%), 5=ABUNDANT(>50%). Species codes are defined below.

Bed #	BRSC	BRSC	BRSC	BRSC	BRSC	BRSC	BRSC	BRSC	BRSC	BRSC	BRSC	Area (acres)
1	3	2	2	4	3	3	2	4	3	4	3	274
2	3	3	2	4	4	3	2	3	4	4	3	786

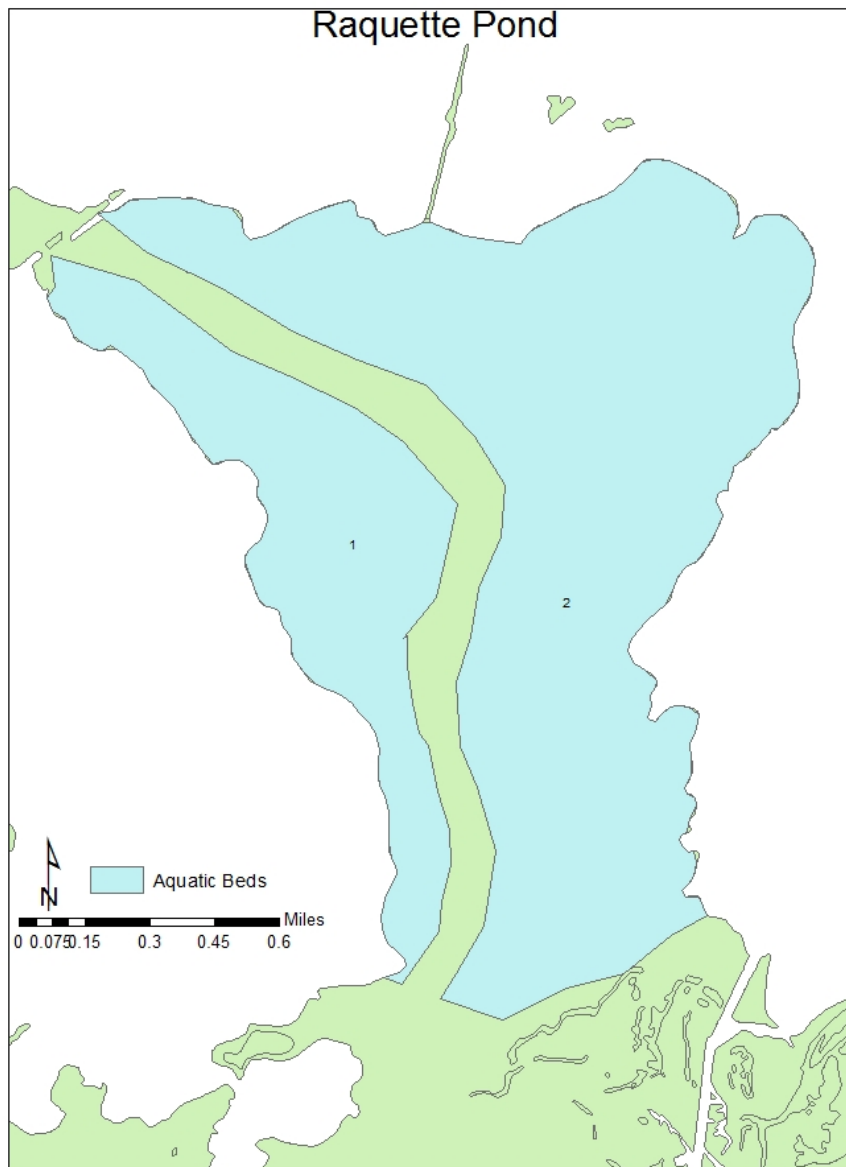
<u>Code</u>	<u>Species</u>
BRSC	Water Shield ( <i>Brasenia schreberi</i> )
POEP	Ribbon Leaf Pondweed ( <i>Potamogeton epihydrus</i> )
POPE	Clasping Leaf Pondweed ( <i>Potamogeton perfoliatus</i> )
NYOD	White Water Lily ( <i>Nymphaea odorata</i> )
SPSP	Bur-Reed ( <i>Sparganium spp.</i> )
NUVA	Yellow Water Lily ( <i>Nuphar variegata</i> )
UTVU	Common Bladderwort ( <i>Utricularia vulgaris</i> )
MYHE	Variable Leaf Milfoil ( <i>Myriophyllum heterophyllum</i> )
SAGR	Grassy Arrowhead ( <i>Sagittaria graminea</i> )
ELSP	Hairgrass ( <i>Eleocharis spp.</i> )
NYPE	Yellow Floatingheart ( <i>Nymphoides peltata</i> )

**Table 2:** Species present on the rake, abundance, and depth at each of the rake toss locations that had plants recovered at Raquette Pond. Refer to Map 2 for rake toss locations. Abundance key: 1=RARE (<5%), 2=OCCASIONAL (6-15%), 3=PRESENT (16-25%), 4=COMMON (26-50%), 5=ABUNDANT (>50%).

Rake Toss #	Bur-Reed ( <i>Sparganium</i> <i>spp.</i> )	Variable Leaf Milfoil ( <i>Myriophyllum</i> <i>heterophyllum</i> )	Hairgrass ( <i>Eleocharis</i> spp.)	Purple Bladderwort ( <i>Utricularia</i> <i>purpurea</i> )	Depth (ft)
0	2		3		5
1	1		3		5
2			4		4
3		3			3
6			2		9
8	3		1		5
11			2		5
13	3				5
14	2		1	1	7
17			1		10
19				2	6



**Map 2:** Rake toss locations on Raquette Pond on 16 July, 2013. Open circles represent locations where no plants were detected, closed circles represent locations where plants were encountered on the rake. Data for rake tosses can be found on Table 2.



**Map 3:** Locations of the aquatic plant beds detected in Raquette Pond during the surface survey on 16 July, 2013. Data for plant beds can be found on Table 1.