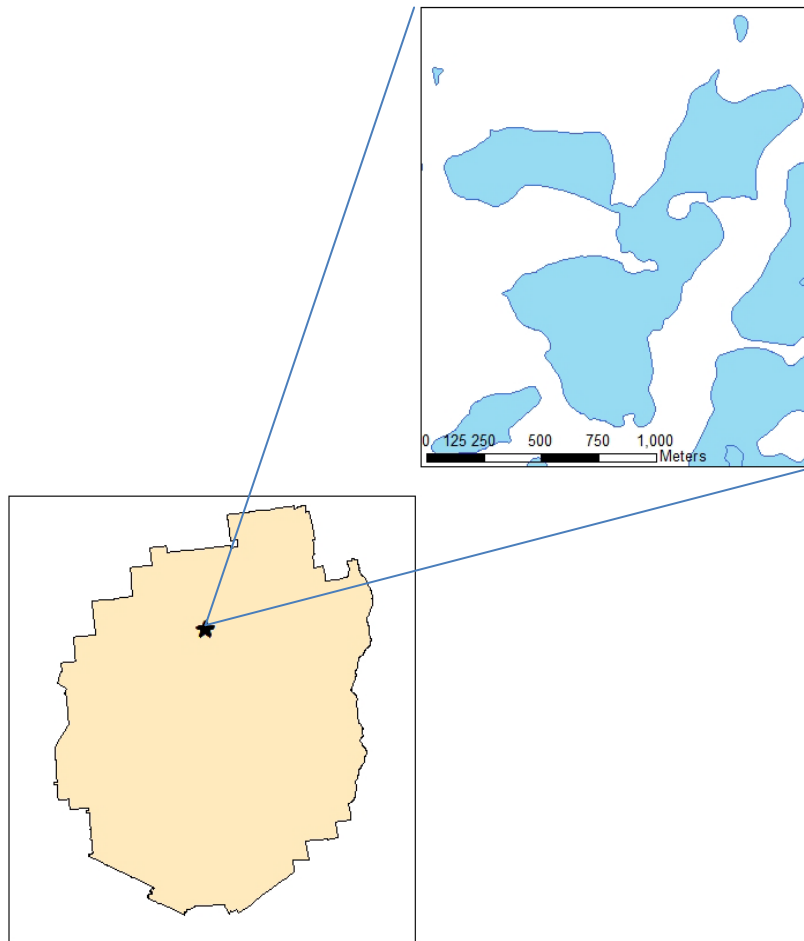


Polliwog Pond Aquatic Plant Survey 2013



Map 1: Location of Polliwog Pond in relation to the Adirondack Park.

Polliwog Pond is located in the Town of Santa Clara in the southwest corner of Franklin County, New York (Map 1). This 185 acre lake was accessed through the use of a public canoe launch on Floodwood Road. Motor boats do not have access to this lake through the use of this boat launch.

An aquatic plant survey was conducted at Polliwog Pond from 23 July 2013. Aquatic plant coverage was moderate, and was comprised of nine plant beds that covered 42 acres or 23% of the lakes surface area. No invasive aquatic plants were detected in the survey. Ten species of native aquatic plants were identified. Species most common in this lake were Bur-Reed (*Sparganium spp.*), Grassy Arrowhead (*Sagittaria graminea*), and Yellow Water Lily (*Nuphar variegata*) (Table 1).

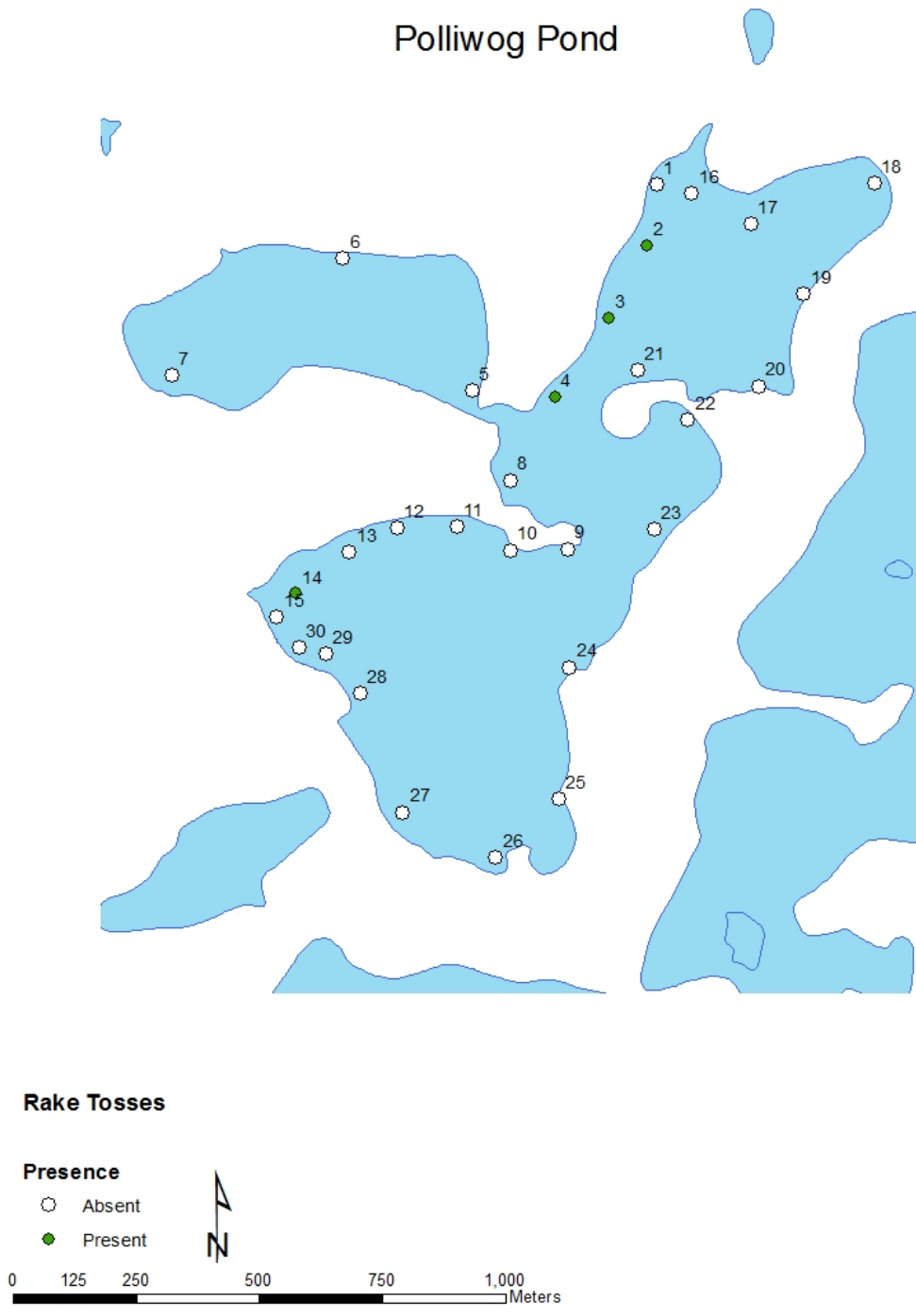
Of the 30 rake tosses deployed through the littoral zone of this lake, 4 had plants recovered. There was one plant species that was brought up on the rake that was not detected during the surface survey. This species was Purple Bladderwort (*Utricularia purpurea*) (Table 2).

Table 1: Abundance and area of aquatic plant beds in Polliwog Pond. Refer to Map 3 for plant bed locations. Abundance key: 1=RARE (<5%), 2=OCCASIONAL (6-15%), 3=PRESENT (16-25%), 4=COMMON(26-50%), 5=ABUNDANT(>50%).

Bed #	POEP	NYOD	SPSP	NUVA	SAGR	ERSP	LODO	POSP	NYPE	Acres
1			2		1	1	3	2		4.8
2			2	1	3		2			5.99
3			3	2	1			1		0.56
4			4		3	1	2			0.4
5	2	3	3	2	3	1				9.72
6			2	2			2			0.44
7	1	1	4		3	3			1	16.83
8			4		1					0.12
9			3	2						3.54

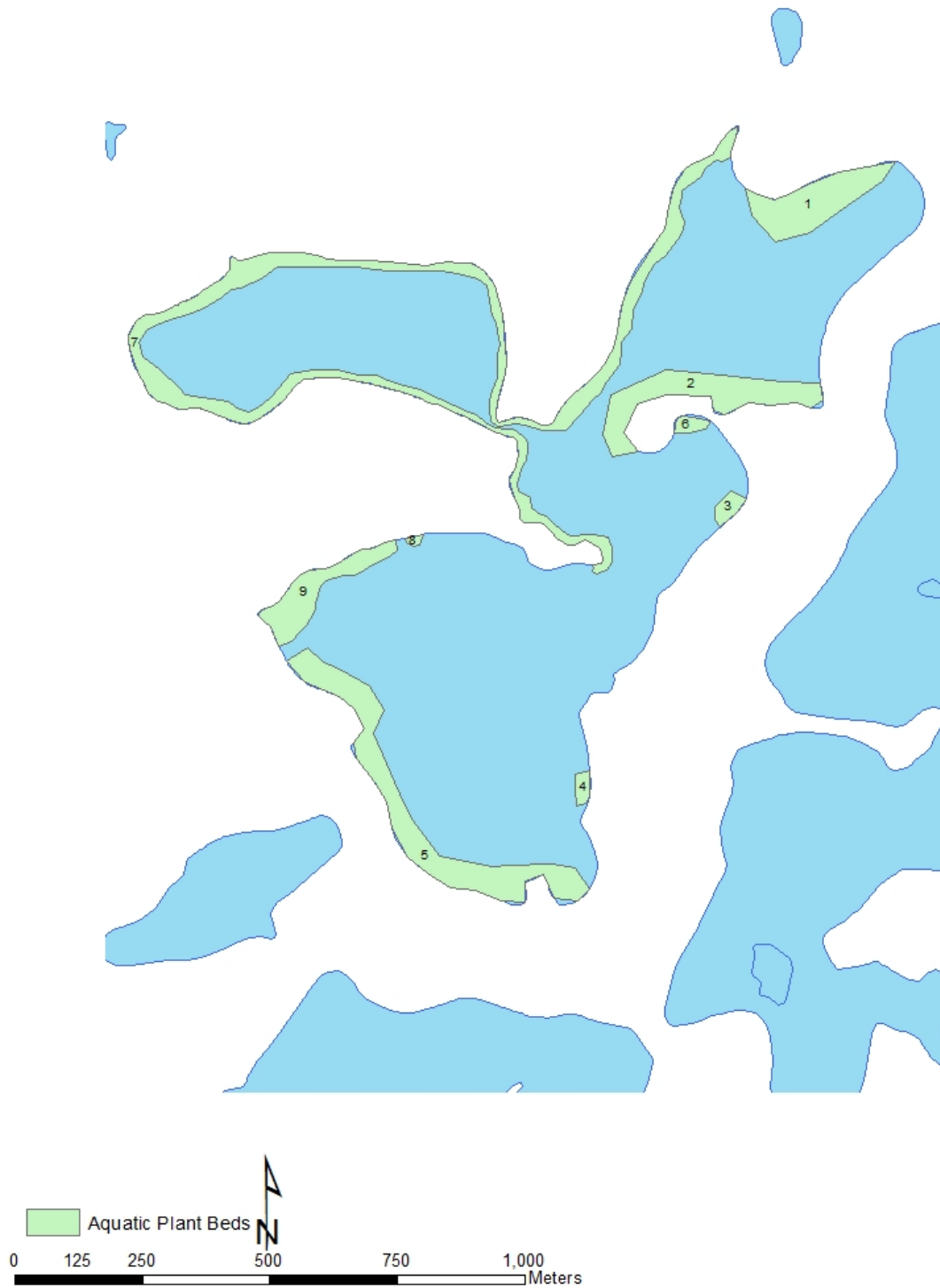
Table 2: Species present on the rake, abundance, and depth at each of the rake toss locations that had plants recovered at Polliwog Pond. Refer to Map 2 for rake toss locations. Abundance key: 1=RARE (<5%), 2=OCCASIONAL (6-15%), 3=PRESENT (16-25%), 4=COMMON (26-50%), 5=ABUNDANT (>50%).

Rake Toss #	Purple Bladderwort (<i>Utricularia purpurea</i>)	Depth (ft)
1	1	8
2	2	6
3	1	7
13	1	6



Map 2: Rake toss locations on Polliwog Pond from 23 July, 2013. Open circles represent locations where no plants were detected, closed circles represent locations where plants were encountered on the rake. Data for rake tosses can be found on Table 2.

Polliwog Pond



Map 3: Locations of the aquatic plant beds detected in Polliwog Pond during the surface survey from 23 July, 2013. Data for plant beds can be found on Table 1.