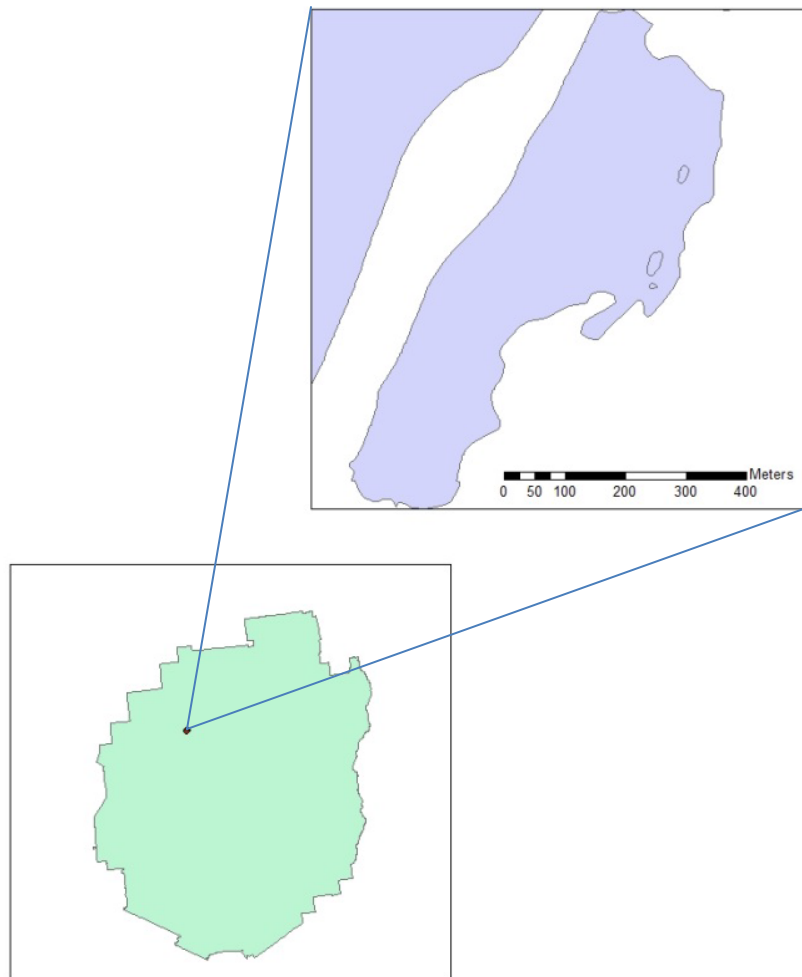


Long Pond Aquatic Plant Survey 2013



Map 1: Location of Long Pond in relation to the Adirondack Park.

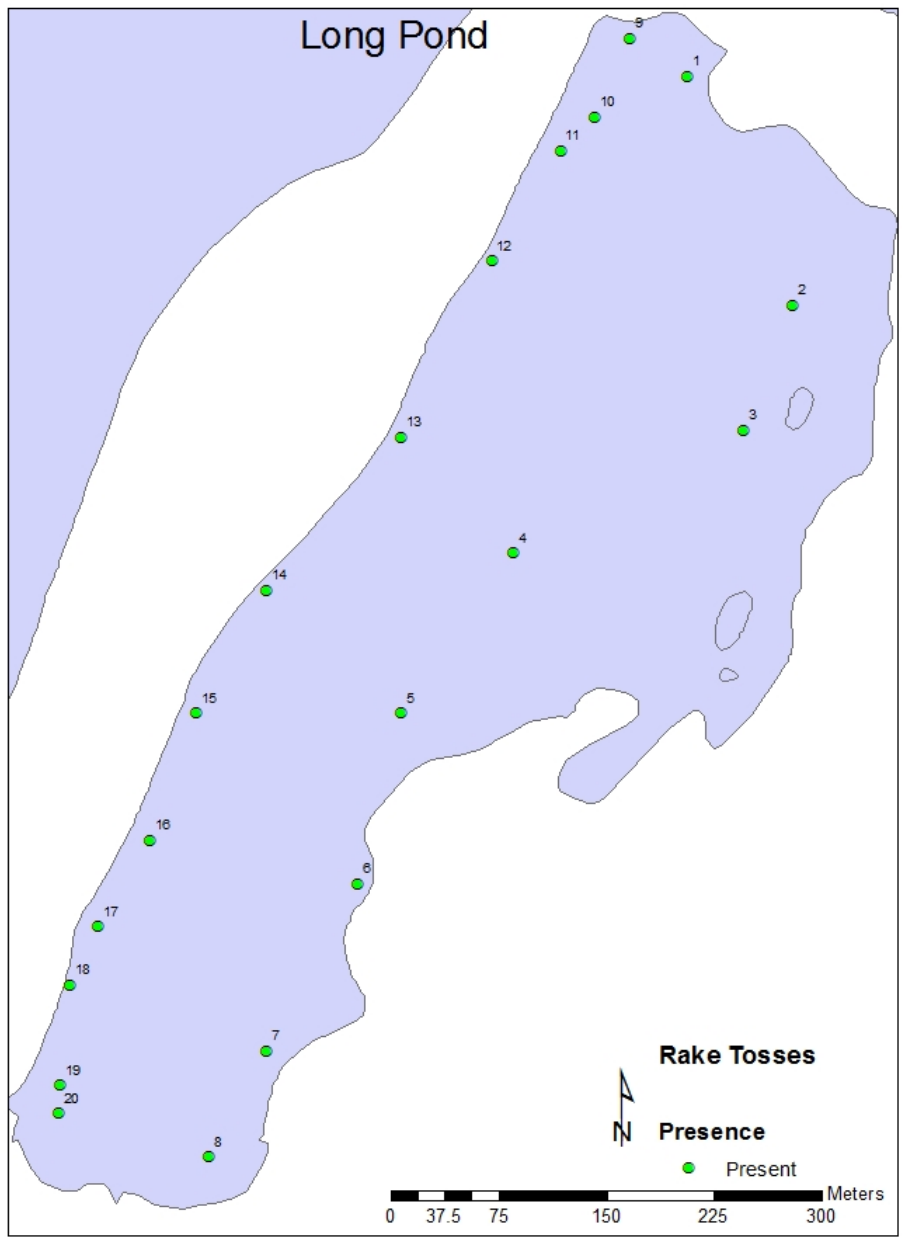
Long Pond is located in the Town of Childwood in the mid-east section of St. Lawrence County, New York (Map 1). This 51 acre pond was accessed through the use of a private canoe launch at the Massawepie Boy Scout Camp. Motor boats do not have access to this lake through the use of this canoe launch.

An aquatic plant survey was conducted at Long Pond on 24 July 2013. Aquatic plant coverage was moderate, and was comprised of 5 plant beds that covered 16 acres or 31% of the lakes surface area. No species of invasive aquatic plants were identified during this survey. Five species of native aquatic plant were identified. Species most common in this lake were Yellow Water Lily (*Nuphar variegata*) and Yellow floatingheart (*Nymphoides pelata*)(Table 1).

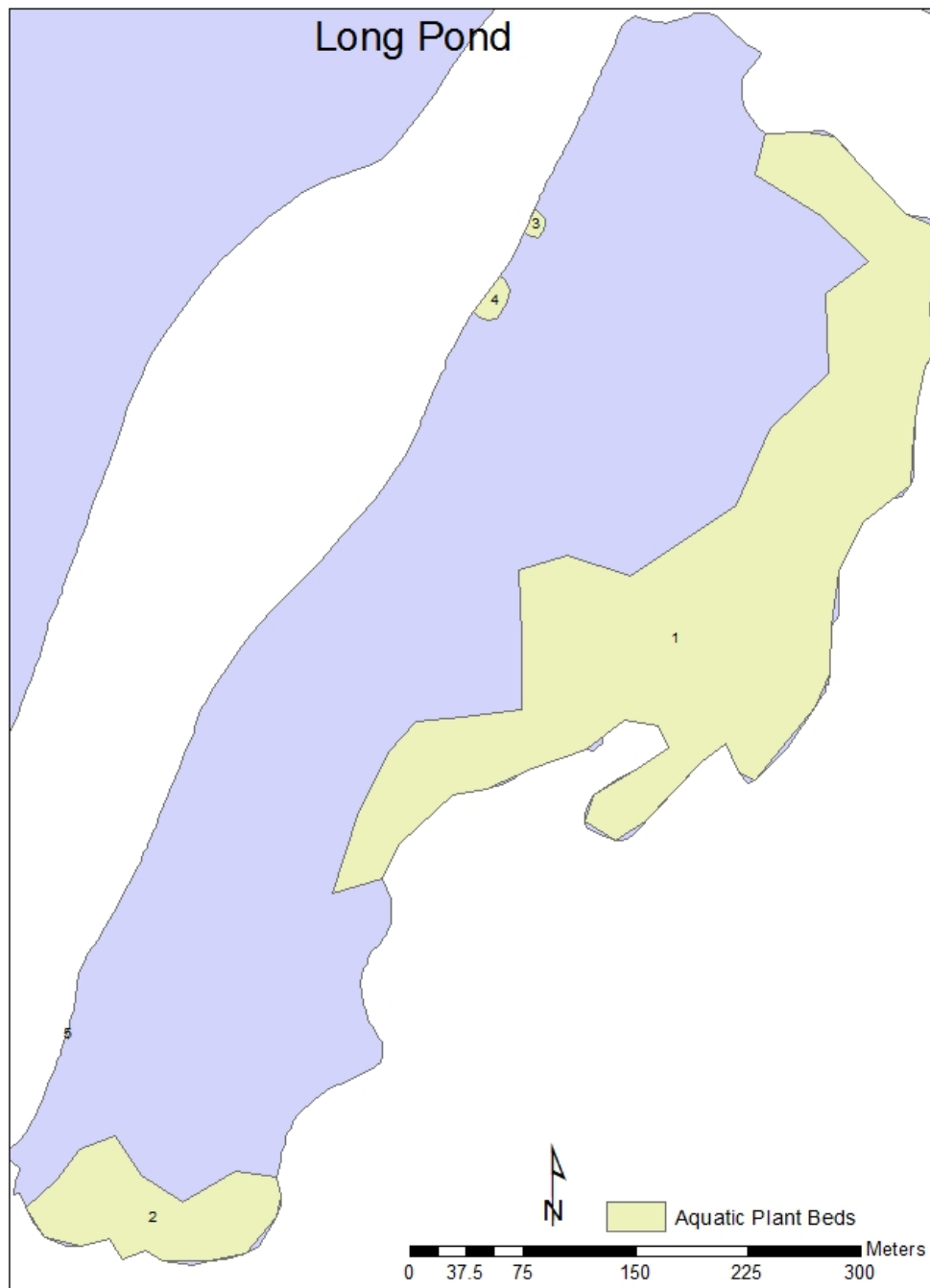
Of the 20 rake tosses deployed through the littoral zone of Long Pond, zero had plants recovered.

Table 1: Abundance and area of aquatic plant beds in Long Pond. Refer to Map 3 for plant bed locations. Abundance key: 1=RARE (<5%), 2=OCCASIONAL (6-15%), 3=PRESENT (16-25%), 4=COMMON(26-50%), 5=ABUNDANT(>50%).

Bed #	White Water Lily (<i>Nymphaea odorata</i>)	Yellow Water Lily (<i>Nuphar variegata</i>)	Common Bladderwort (<i>Utricularia vulgaris</i>)	Floating leaf Pondweed (<i>Potamogeton natans</i>)	Little Floating Heart (<i>Nymphoides peltata</i>)	Area (acres)
1	2	1	3	4	3	13.89
2	2		2		3	2.02
3		2				0.03
4		3				0.09
5		3				0.01



Map 2: Rake toss locations on Long Pond on 24 July, 2013. Open circles represent locations where no plants were detected, closed circles represent locations where plants were encountered on the rake. Data for rake tosses can be found on Table 2.



Map 3: Locations of the aquatic plant beds detected in Long Pond during the surface survey on 24 July, 2013. Data for plant beds can be found on Table 1.