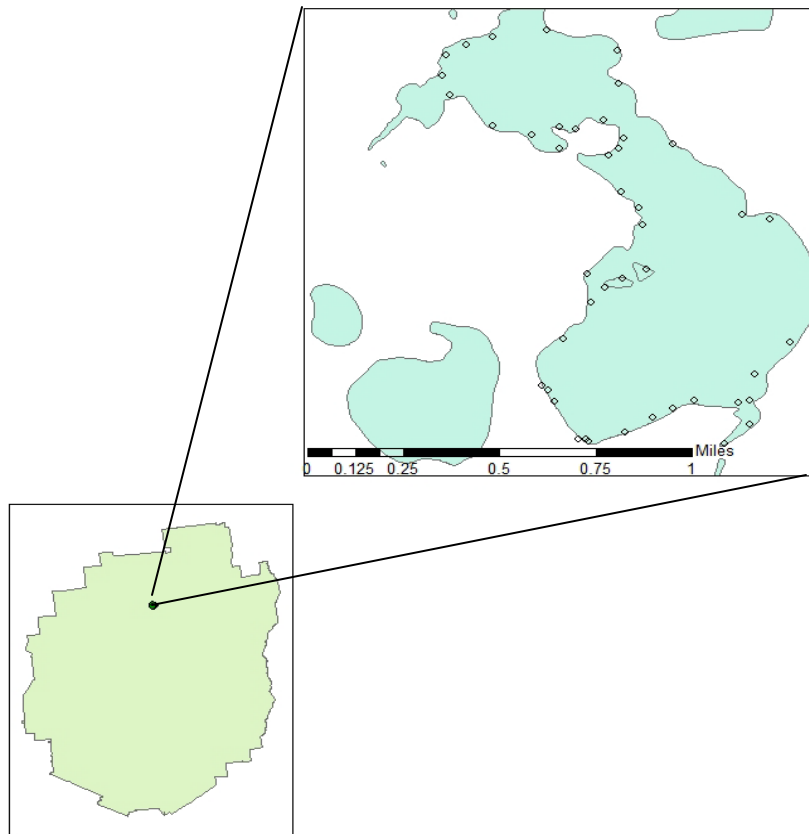


Little Clear Pond Plant Survey 2013



Map 1: Location of Little Clear Pond

Little Clear Pond is located in the Town of Santa Clara, Franklin County, New York (Map 1). This 352 acre lake was accessed through the use of a public canoe launch on Little Clear Pond.

An aquatic plant survey was conducted at Little Clear Pond on 9 July 2013. Aquatic plant coverage was moderate, and was comprised of 21 plant beds that covered 11 acres or 3.1% of the lake. No aquatic invasive plants were identified during this survey. Seven different species of native aquatic plants were identified. Species most common in this lake were Large-leaf pondweed (*Potamogeton amplifolius*), White Waterlily (*Nymphaea ordata*), and Pipewort (*Eriocaulon spp.*) (Table 1).

Of the 47 rake tosses deployed through the littoral zone of this lake, 5 had plants recovered. There were not any species of plant that were brought up on the rake that were not detected during the surface survey (Table 2).

Table 1: Abundance and area of aquatic plant beds in Little Clear Pond. Refer to Map 3 for plant bed locations. Abundance key: 1=RARE (<5%), 2=OCCASIONAL (6-15%), 3=PRESENT (16-25%), 4=COMMON(26-50%), 5=ABUNDANT(>50%). Species codes are defined on the next page.

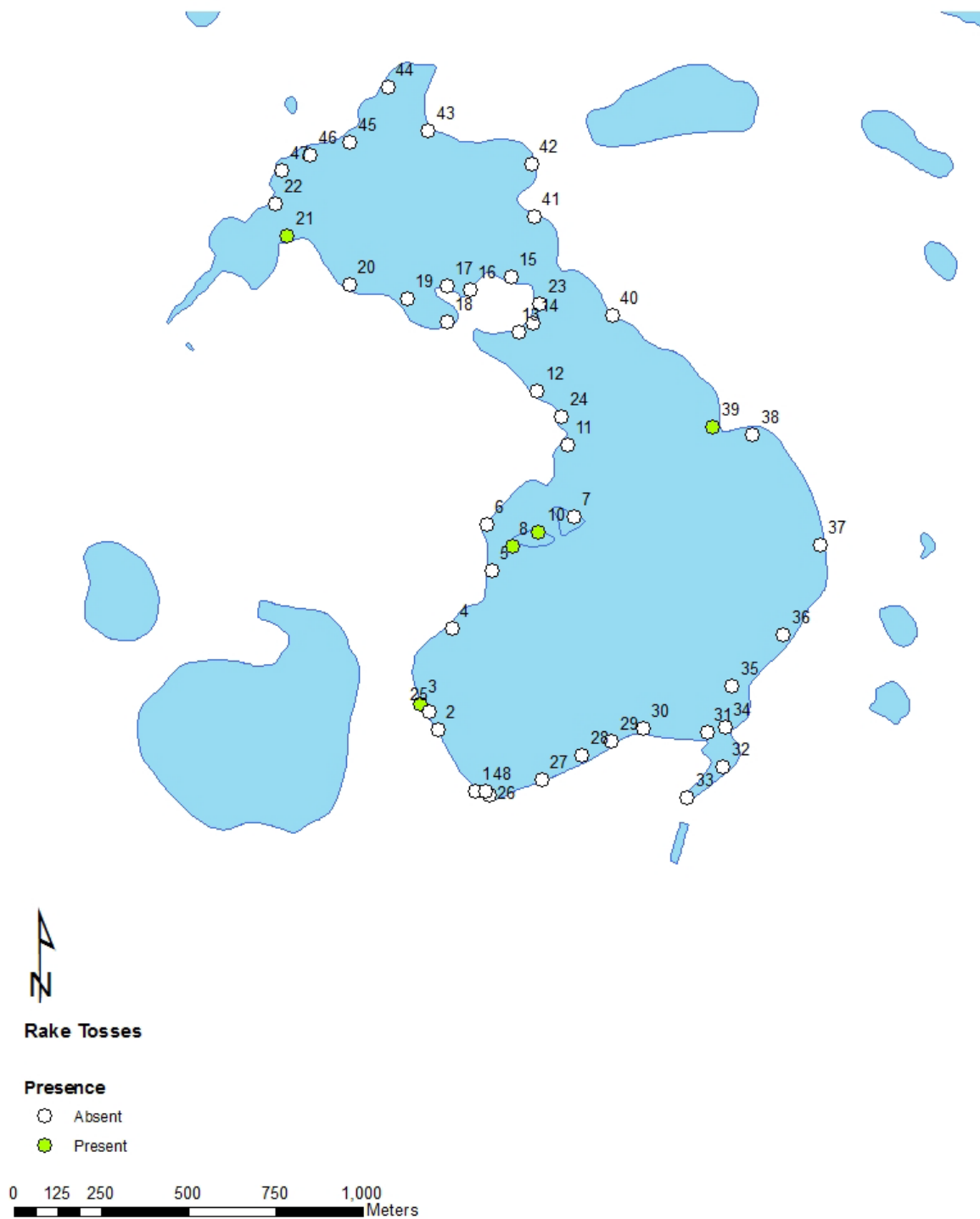
Bed #	BRSC	ELCA	POAM	NYOD	SPSP	NUVA	UTVU	SAGR	ELNU	ERSP	LODO	ELSP	Area (acres)
1	0	0	2	0	0	0	0	3	0	0	2	0	0.03
2	0	0	4	0	0	0	0	0	0	0	0	0	0.01
3	0	0	4	0	0	0	0	1	1	0	0	2	0.01
4	0	0	3	0	0	0	0	0	0	0	0	0	0.01
5	0	0	0	0	0	3	0	0	0	0	0	0	0.01
6	0	0	4	0	0	1	0	0	0	3	2	0	0.44
7	0	0	2	0	0	0	0	0	0	0	0	4	0.01
8	0	0	4	0	0	0	0	0	0	0	0	0	0.07
9	0	0	0	1	0	0	0	0	0	0	0	0	0.01
10	0	0	0	3	0	0	0	0	0	0	0	0	0.01
11	0	0	3	4	0	0	0	0	0	0	0	0	0.67
12	0	1	1	0	0	0	0	1	0	0	0	0	0.05
13	0	0	1	2	0	0	1	1	0	3	0	0	0.47
14	0	0	3	0	0	0	0	1	0	0	0	0	0.06
15	0	0	2	0	1	0	0	0	0	3	1	0	0.08
16	0	0	2	0	0	0	0	0	0	0	0	0	0.04
17	0	1	0	0	0	0	0	1	0	1	0	0	0.01
18	0	0	1	1	0	1	0	0	0	4	0	0	1.14
19	0	0	2	0	0	0	0	0	0	0	0	0	0.05
20	0	0	0	2	0	0	0	0	0	0	0	0	0.02
21	4	1	3	2	0	2	0	0	0	0	0	0	7.90

<u>Code</u>	<u>Common name (scientific name)</u>
BRSC	Water Shield (<i>Brasenia schreberi</i>)
ELCA	Canadian Waterweed (<i>Elodea canadensis</i>)
POAM	Large-leaf pondweed (<i>Potamogeton amplifolius</i>)
NYOD	White Waterlily (<i>Nymphaea ordata</i>)
SPSP	Bur-reed (<i>Sparganium spp.</i>)
NUVA	Spatterdock (<i>Nuphar variegata</i>)
UTVU	Common Bladderwort (<i>Utricularia vulgaris</i>)
SAGR	Grassy Arrowhead (<i>Sagittaria spp.</i>)
ELNU	Western Waterweed (<i>Elodea nuttalia</i>)
ERSP	Pipewort (<i>Eriocaulon spp.</i>)
LODO	Water Lobelia (<i>Lobelia dortmanna</i>)
ELSP	Hairgrass (<i>Eleocharis spp.</i>)

Table 2: Species present on the rake, abundance, and depth at each of the rake toss locations that had plants recovered at Little Clear Pond. Refer to Map 2 for rake toss locations. Abundance key: 1=RARE (<5%), 2=OCCASIONAL (6-15%), 3=PRESENT (16-25%), 4=COMMON (26-50%), 5=ABUNDANT (>50%).

Rake #	Largeleaf Pondweed (<i>Potamogeton amplifolius</i>)	Robbin's Pondweed (<i>Potamogeton robbinsii</i>)	Purple Bladderwort (<i>Utricularia purpurea</i>)	Depth (ft)
5			2	2
8	2			8
21	1			10
26		2		6
39	1			8

Little Clear Pond



Map 2: Rake toss locations on Little Clear Pond on 9 July 2013. Open circles represent locations where no plants were detected, closed circles represent locations where plants were encountered on the rake. Data for rake tosses can be found on Table 2.

Little Clear Pond



Map 3: Locations of the aquatic plant beds detected in Little Clear Pond during the surface survey on 9 July 2013. Data for plant beds can be found on Table 1.