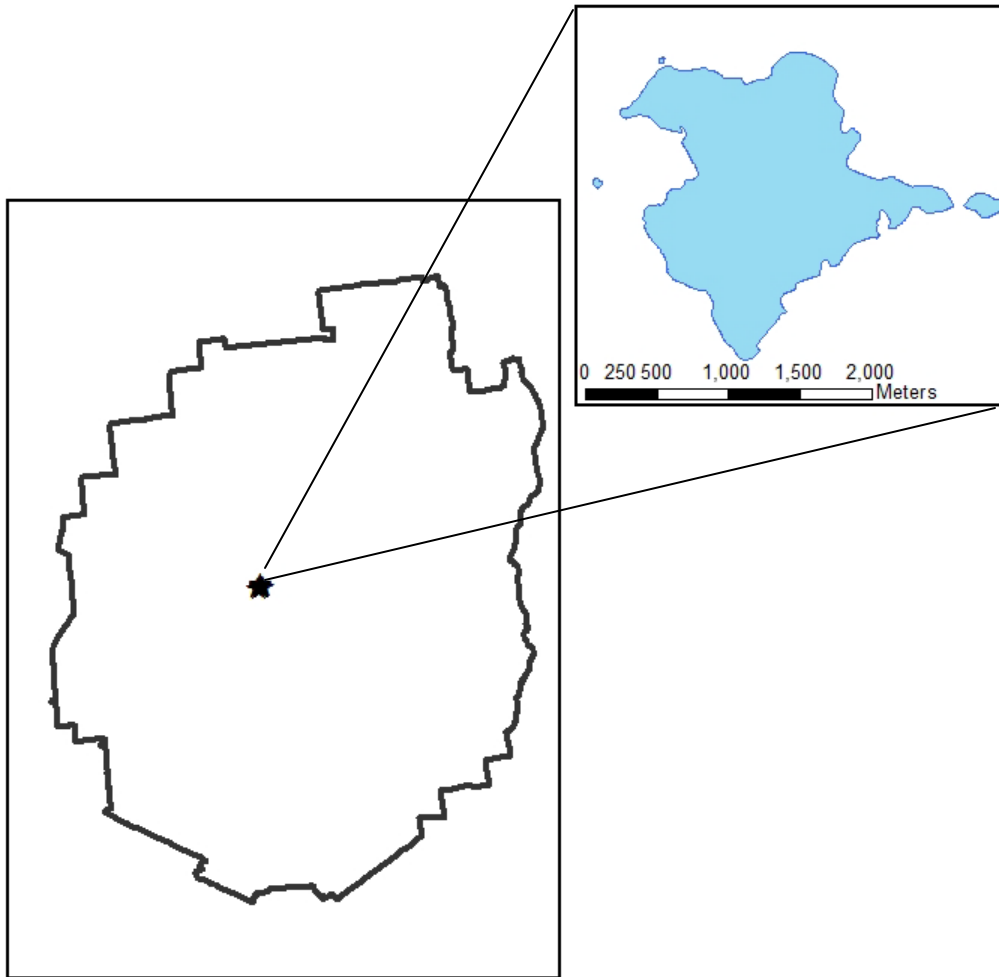


Lake Eaton Aquatic Plant Survey 2013



Map 1: Location of Lake Eaton

Lake Eaton is located in the Town of Long Lake in Hamilton County, New York (Map 1). This 558 acre lake was accessed through the use of the public boat launch located in Lake Eaton State campground.

An aquatic plant survey was conducted at Lake Eaton on 11 June 2013. Aquatic plant coverage was relatively low in Lake Eaton, and was comprised of 10 plant beds that covered 2.7 acres or less than 1% of the Lake (Map 3). No aquatic invasive species were identified in Lake Eaton. Seven different species of native aquatic plants were identified. Species most common in this body include Pipewort (*Eriocaulon spp.*), Oak's Pondweed (*Potamogeton oakesianus*), Grassy Arrowhead (*Sagittaria gramimea*) and White Water lily (*Nymphaea odorata*) (Table 1).

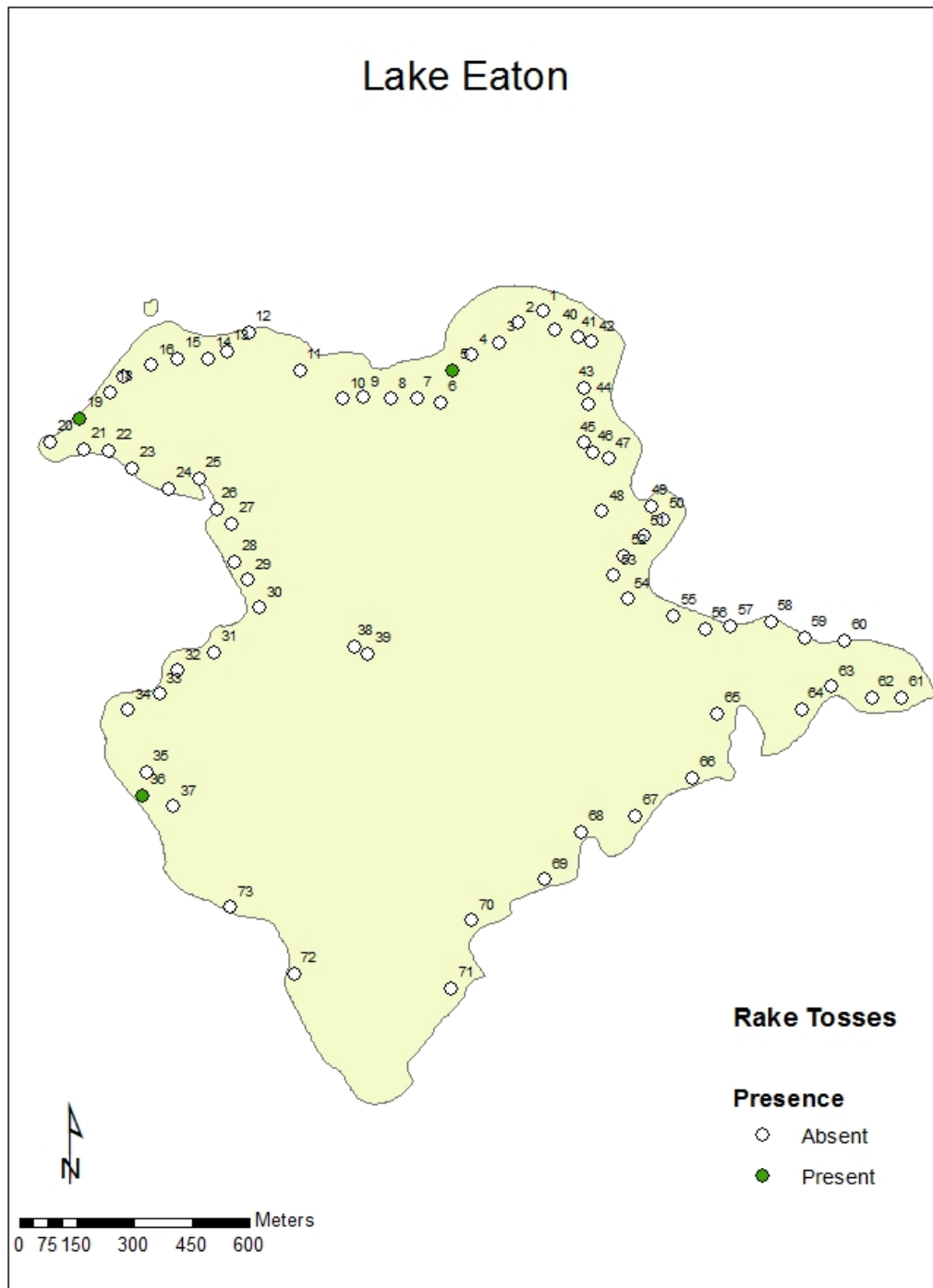
Of the 73 rake tosses deployed through the littoral zone of the lake, 3 had plants recovered (Map 2). There were no species that were brought up on the rake that were not detected in the surface survey (Table 2).

Table 1: Abundance and area of aquatic plant beds in Lake Eaton. Refer to Map 3 for bed locations. Abundance key: 1=RARE(<5%), 2=OCCASIONAL(6-15%), 3=PRESENT(16-25%), 4=COMMON(26-50%), 5=ABUNDANT(>50%).

Bed #	White Water lily (<i>Nymphaea odorata</i>)	Burr reed (<i>Sparganium spp.</i>)	Yellow Water lily (<i>Nuphar variegata</i>)	Grassy Arrowhead (<i>Sagittaria gramimea</i>)	Oak's Pondweed (<i>Potamogeton oakesianus</i>)	Pipewort (<i>Eriocaulon spp.</i>)	Water Lobelia (<i>Lobelia dortmanna</i>)	Area (acres)
1						4		1.13
2		5						0.18
3	1		3	1	3	2		0.67
4			2	2				0.04
5	2			1	1	2		0.16
6						4	4	0.04
7					1			0.01
8						1		0.28
9	1				1			0.09
10		1	1					0.09

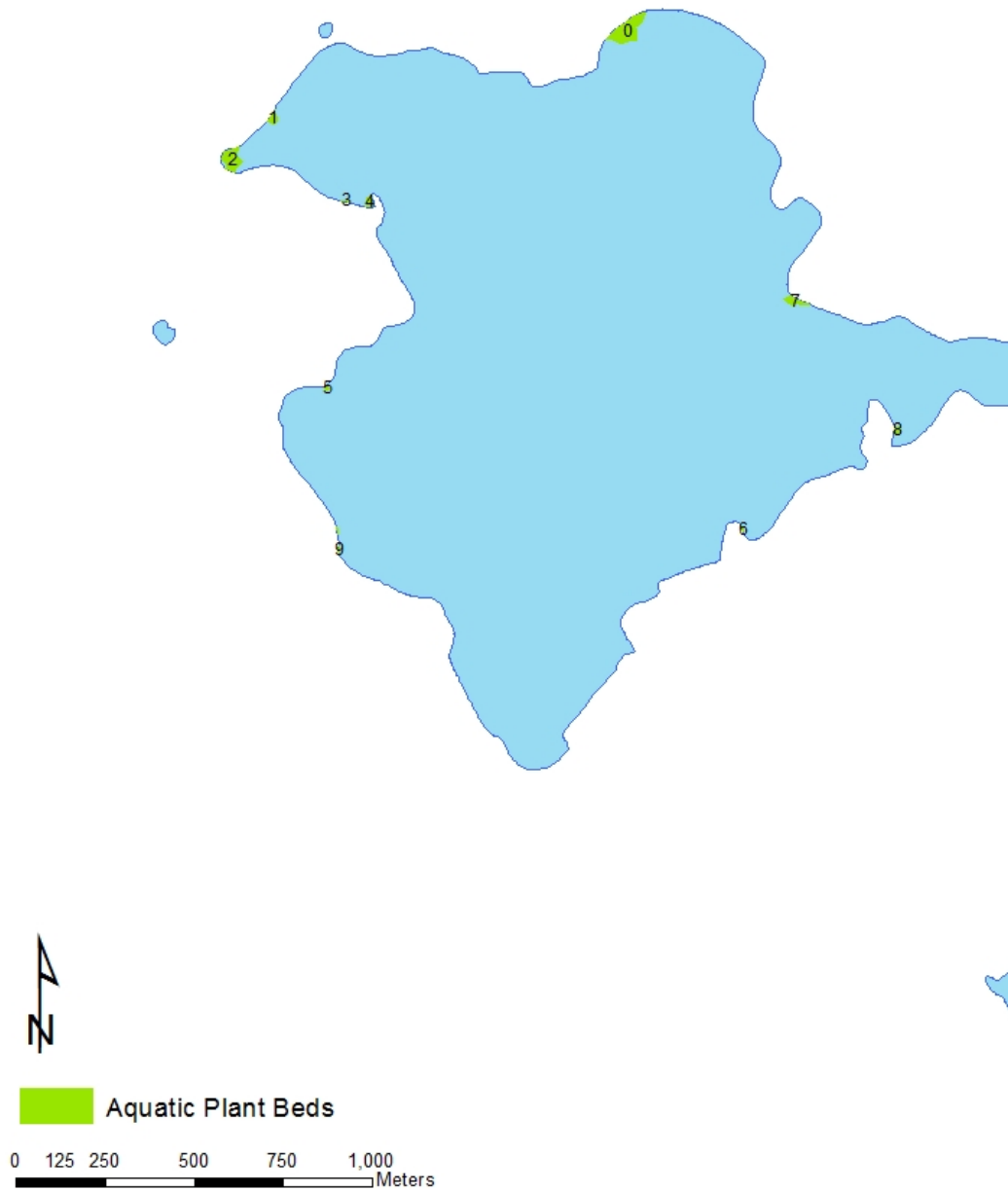
Table 2: Species present on the rake, abundance, and depth at each of the rake toss locations at Lake Eaton. Refer to Map 2 for rake toss locations. Abundance key: 1=RARE(<5%), 2=OCCASIONAL(6-15%), 3=PRESENT(16-25%), 4=COMMON(26-50%), 5=ABUNDANT(>50%).

Rake Toss #	Pipewort (<i>Eriocaulon spp.</i>)	Depth (ft)
9	1	4
24	2	6
50	3	3



Map 2: Rake toss locations on Lake Eaton on 11 June 2013. Open circles represent locations where no plants were detected, closed circles represents locations where plants were encountered on the rake. Data for rakes tosses can be found on Table 2.

Lake Eaton



Map 3: Locations of the aquatic plant beds detected in Lake Eaton during the surface survey on 11 June 2013. Data for plants beds can be found on Table 1.