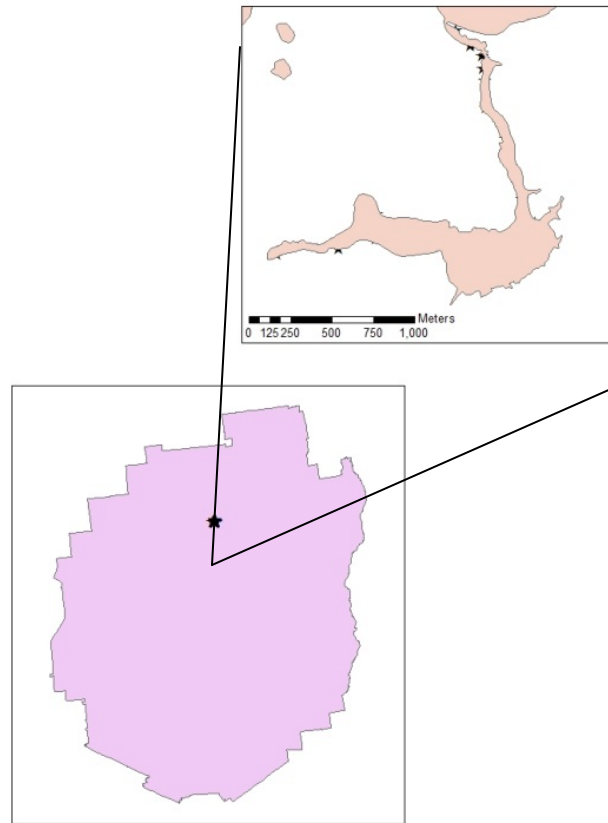


Lake Clear Outlet Plant Survey 2013



Map: 1 Location of Lake Clear Outlet

Lake Clear Outlet is located in the town of Lake Clear in Franklin County, New York (Map 1). This 115 acre outlet was accessed through the use of a canoe access point located on Forest Home Road.

An aquatic plant survey was conducted at Lake Clear Outlet on 27 June 2013. Aquatic plant coverage was high in Lake Clear Outlet, and was comprised of 8 plant beds that covered 67.9 acres or 58.3% of the outlet (Map 3). No aquatic invasive plants were identified in Lake Clear Outlet. Thirteen different species of native aquatic plants were identified. Species most common in this water body include Burr reed (*Sparganium spp.*), Yellow Water lily (*Nuphar variegata*), Clasp Leaf Pondweed (*Potamogeton perfoliatus*), and Water Shield (*Brasenia schreberi*) (Table 1).

Of the 31 rake tosses deployed through the littoral zone of the outlet, 21 had plants recovered (Map 2). There were no species that were brought up on the rake that were not detected in the surface survey.

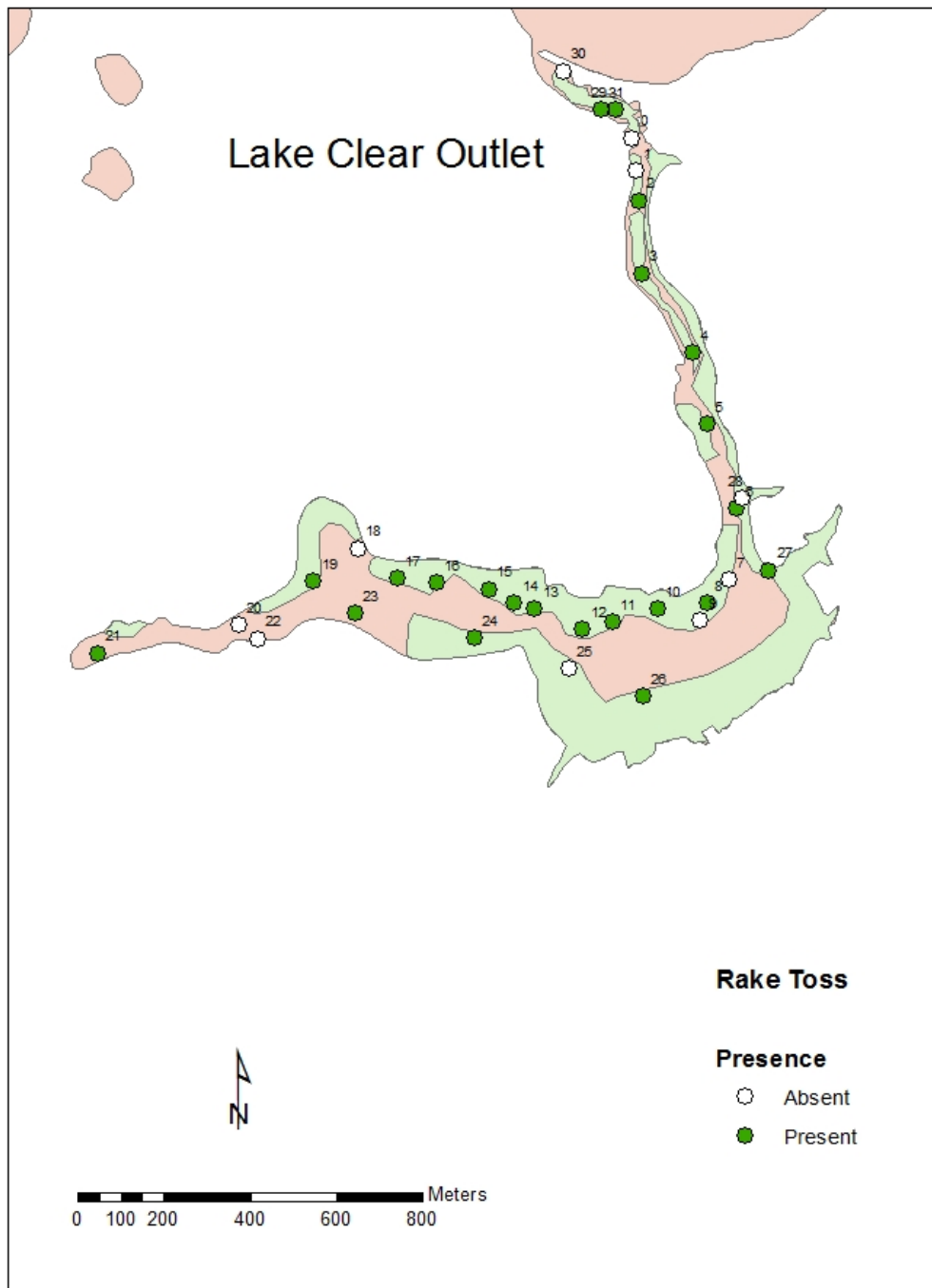
Table 1: Abundance and area of aquatic plant beds in Lake Clear Outlet. Refer to Map 3 for bed locations. Abundance key: 1=RARE(<5%), 2=OCCASIONAL(6-15%), 3=PRESENT(16-25%), 4=COMMON(26-50%), 5=ABUNDANT(>50%).

Bed #	BRSC	ELCA	POAM	POEP	POPE	PORO	NYOD	VAAM	SPSP	NUVA	UTVU	SAGR	ELSP	Area (Acres)
1	0	1	0	2	1	2	0	0	4	0	2	3	2	0.58
2	1	0	0	2	2	0	1	1	1	1	0	1	0	2.21
3	3	0	0	0	0	0	0	0	2	0	0	2	0	1.33
4	4	0	3	3	1	0	4	0	2	3	1	0	0	16.56
5	4	0	0	1	3	1	3	0	3	2	0	0	0	4.67
6	0	0	0	2	0	0	0	0	2	2	0	0	0	0.66
7	5	0	0	1	2	0	5	0	3	2	1	0	0	39.99
8	0	0	0	0	1	0	0	0	2	2	0	3	0	1.94

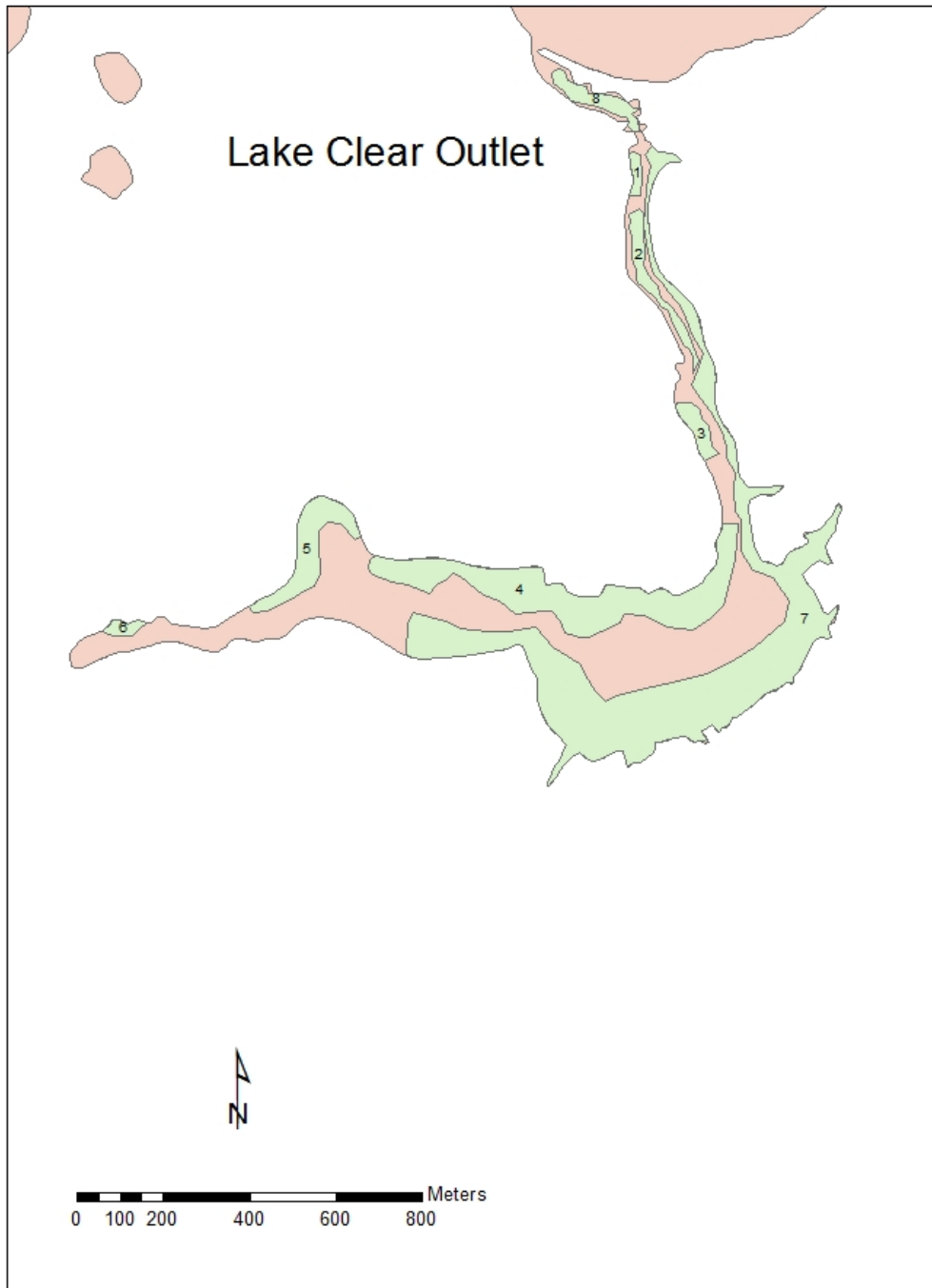
<u>Code</u>	<u>Common name (scientific name)</u>
BRSC	Water Shield (<i>Brasenia schreberi</i>)
ELCA	Canadian Water Weed (<i>Elodea Canadensis</i>)
POAM	Large-leaf pondweed (<i>Potamogeton amplifolius</i>)
POEP	Ribbon-leaf Pondweed (<i>Potamogeton epihydrus</i>)
POPE	Clasping Leaf Pondweed (<i>Potamogeton perfoliatus</i>)
PORO	Robbins Pond Weed (<i>Potamogeton robbinsii</i>)
NYOD	White waterlily (<i>Nymphaea odrata</i>)
VAAM	Eel-Grass (<i>Vallisneria americana</i>)
SPSP	Burr reed (<i>Sparganium spp.</i>)
NUVA	Yellow Water lily (<i>Nuphar variegata</i>)
UTVU	Common Bladderwort (<i>Utricularia vulgaris</i>)
SAGR	Grassy Arrowhead (<i>Sagittaria spp.</i>)
ELSP	Hairgrass (<i>Eleocharis spp.</i>)

Table 1: Species present on the rake, abundance, and depth at each of the rake toss locations at Lake Clear Outlet. Refer to Map 2 for rake toss locations. Abundance key: 1=RARE(<5%), 2=OCCASIONAL(6-15%), 3=PRESENT(16-25%), 4=COMMON(26-50%), 5=ABUNDANT(>50%).

Rake Toss #	Canadian Water Weed (Elodea Canadensis)	Ribbon-leaf Pondweed (Potamogeton epihydrus)	Robbins Pond Weed (Potamogeton robbinsii)	Brittle Wort (Nitella spp.)	Burr reed (Sparganium spp.)	Common Bladderwort (Utricularia vulgaris)	Grassy Arrowhead (Sagittaria spp.)	Hairgrass (Eleocharis spp.)	Common Bladderwort (Utricularia vulgaris)	Depth (ft)
2	0	0	0	0	0	0	0	1	0	3
3	0	0	0	0	0	0	1	0	0	3
4	0	0	0	0	0	0	1	0	0	3
5	0	0	1	0	0	0	0	1	0	4
6	0	0	5	0	0	0	0	0	0	4
8	0	0	0	0	0	0	0	1	0	4
10	1	0	0	0	0	0	0	0	0	3
11	0	0	5	0	0	0	0	0	0	4
12	0	0	0	5	0	0	0	5	0	5
13	0	0	0	0	0	0	0	5	0	7
14	0	0	0	0	0	0	0	4	0	6
15	0	0	0	0	0	0	0	5	0	6
16	0	0	0	0	0	0	0	0	0	6
17	0	0	0	0	0	0	0	0	4	5
19	0	1	1	0	0	1	0	0	0	4
21	0	3	0	0	0	1	0	0	0	8
23	0	0	0	0	0	1	0	0	0	5
24	0	0	2	0	1	0	0	0	0	5
26	0	0	5	0	0	0	0	0	0	4
27	0	0	0	0	2	0	0	0	0	3
29	0	0	0	0	0	0	3	0	0	4
31	0	0	0	0	0	0	1	0	0	3



Map 2: Rake toss locations on Lake Clear Outlet on 27 June 2013. Open circles represent locations where no plants were detected, closed circles represents locations where plants were encountered on the rake. Data for rake tosses can be found on Table 2.



Map 3: Locations of the aquatic plant beds detected in Clear Lake Outlet during the surface survey on 27 June 2013. Data for plant beds can be found on Table 1.