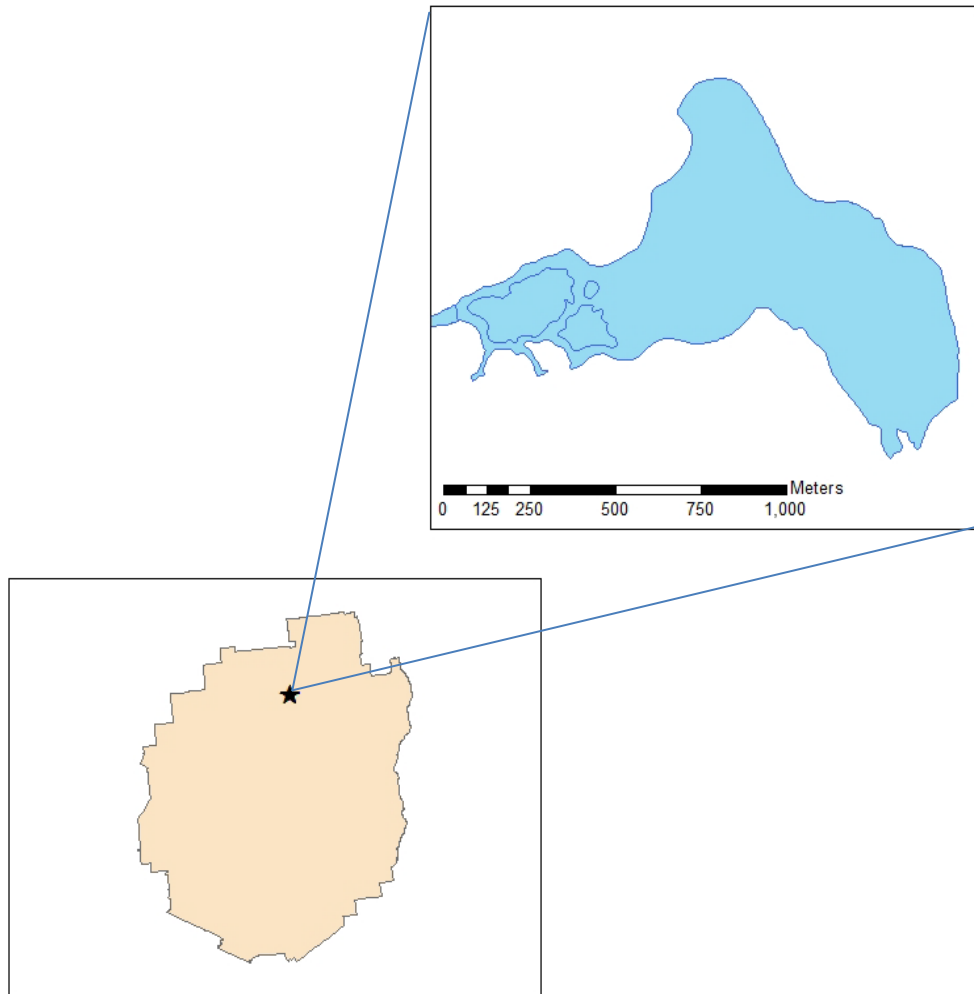


Jones Pond Aquatic Plant Survey 2013



Map 1: Location of Jones Pond in relation to the Adirondack Park.

Jones Pond is located in the Town of Brighton in Franklin County, New York (Map 1). This ~160 acre lake was accessed through the use of a public boat launch on Jones Pond Rd. Motor boats can have access to this lake through the use of this boat launch.

An aquatic plant survey was conducted at Jones Pond on 31, July 2013. Aquatic plant coverage was substantial, and was comprised of 2 plant beds that covered 150 acres or 94% of the lakes surface area. No aquatic invasive plants were observed in Jones Pond in this survey. Seventeen different species of native aquatic plants were identified. Species most common in this lake were Robbins Pondweed (*Potamogeton robinsii*) and Canadian Waterweed (*Elodea canadensis*) (Table 1).

Of the 32 rake tosses deployed through the littoral zone of this lake, 27 had plants recovered. There were no plant species that were brought up on the rake that were not detected during the surface survey.

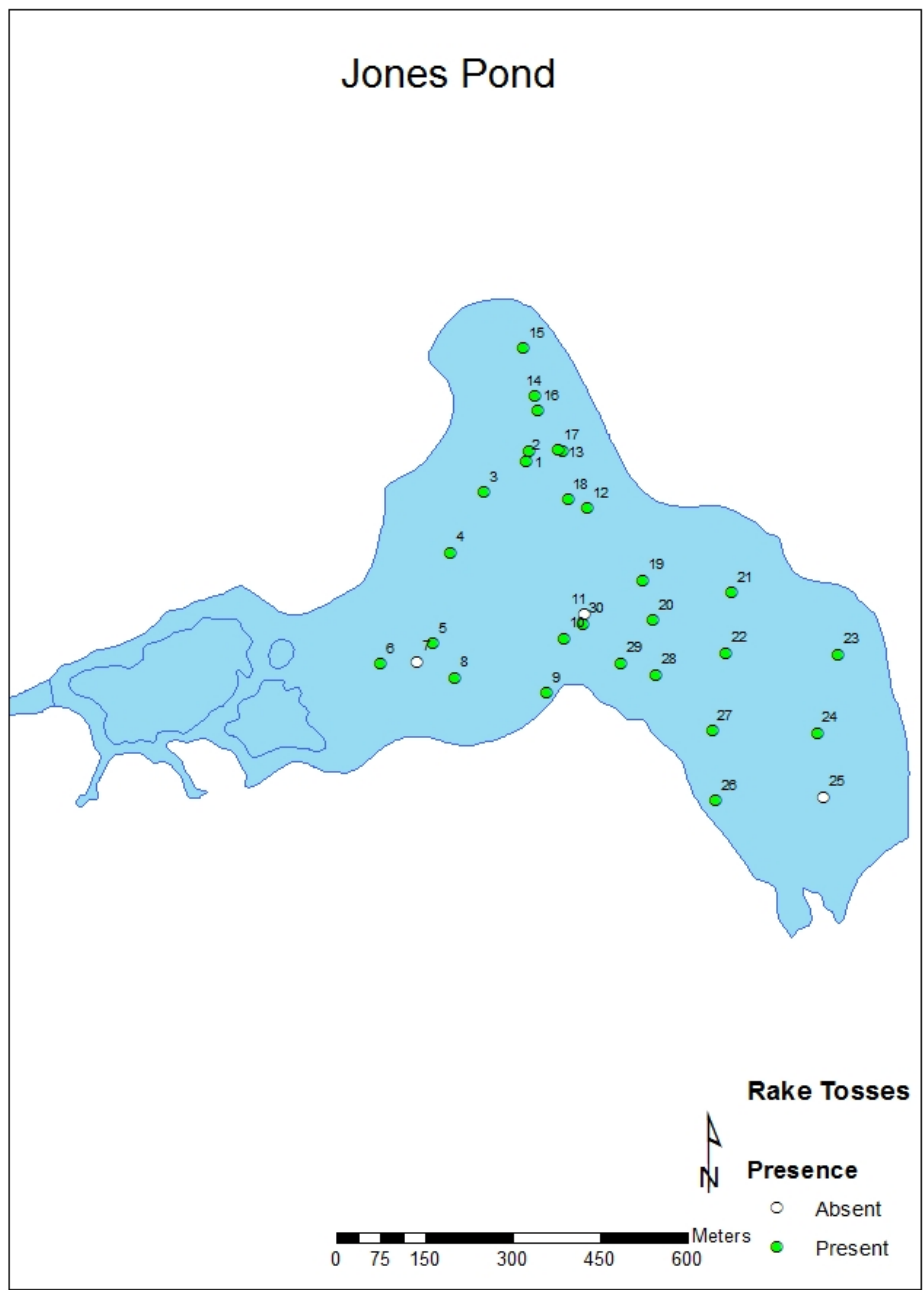
Table 1: Abundance and area of aquatic plant beds in Jones Pond. Refer to Map 3 for plant bed locations. Abundance key: 1=RARE (<5%), 2=OCCASIONAL (6-15%), 3=PRESENT (16-25%), 4=COMMON(26-50%), 5=ABUNDANT(>50%).

Bed #	Water Shield (<i>Brasenia schreberi</i>)	Canadian Waterweed (<i>Elodea canadensis</i>)	Largeleaf Pondweed (<i>Potamogeton amplifolius</i>)	Clasping Leaf Pondweed (<i>Potamogeton perfoliatus</i>)	Robbins Pondweed (<i>Potamogeton robinsii</i>)	Purple Bladderwort (<i>Utricularia purpurea</i>)
1	2	5	2	1	5	4
2	3	4	4	2	5	2
Bed #	White Water Lily (<i>Nymphaea odorata</i>)	Brittlewort (<i>Nitella spp.</i>)	Eel-grass (<i>Vallisneria americana</i>)	Bur-Reed (<i>Sparganium spp.</i>)	Yellow Water Lily (<i>Nuphar variegata</i>)	Western Waterweed (<i>Elodea nuttalia</i>)
1	2		2			
2	3	2	2	2	3	1
Bed #	Common Bladderwort (<i>Utricularia vulgaris</i>)	Grassy Arrowhead (<i>Sagittaria graminea</i>)	Small Pondweed (<i>Potamogeton pusillus</i>)	Floating Pondweed (<i>Potamogeton natans</i>)	Ribbon Leaf Pondweed (<i>Potamogeton epihydrus</i>)	Area (Acres)
1		3			2	78.25
2	4	1	2	2	3	72.24

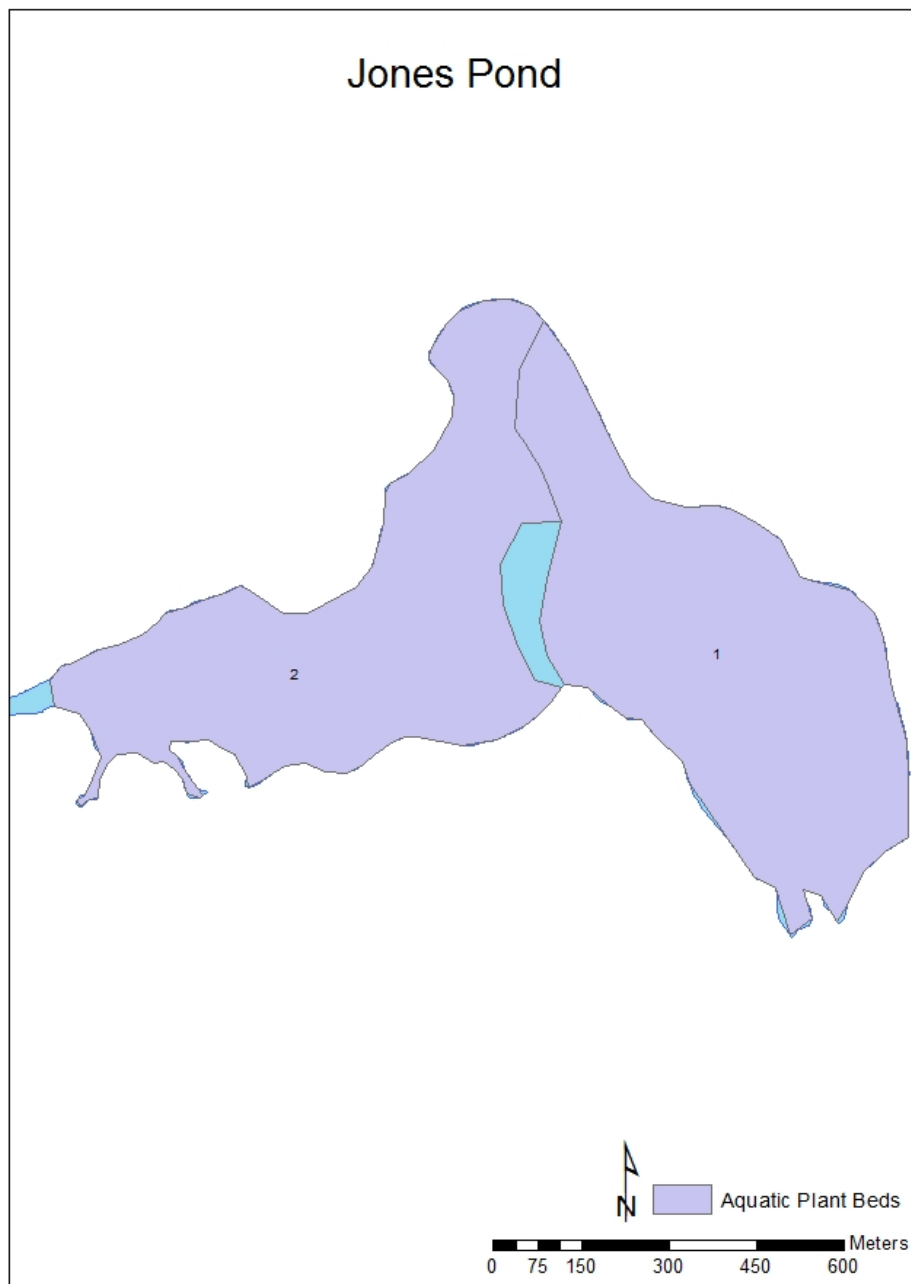
Table 2: Species present on the rake, abundance, and depth at each of the rake toss locations that had plants recovered at Jones Pond. Refer to Map 2 for rake toss locations. Abundance key: 1=RARE (<5%), 2=OCCASIONAL (6-15%), 3=PRESENT (16-25%), 4=COMMON (26-50%), 5=ABUNDANT (>50%). Species codes are defined on the next page.

Rake Toss #	ELCA	POEP	PORO	NISP	VAAM	UTVU	ELNU	ELSP	Depth (ft)
1			4			1			5
2			5						2
3	1		5						4
4			5						4
5	1	1		1					6
6							1	1	3
8				3	2		3		5
9			5	2					2
10			5				4		6
12			5						2
13			5						4
14	3		3	5					1
15							4		3
16			5						3
17			5						3
18			5						3
19	5		5						4
20	5		5						6
21	5								7
22			4						6
23	3		1						7
24			5				1		6
26			5						2
27			5						4
30			4						5
31	5		1						7
32				1					6

<u>Code</u>	<u>Common name (scientific name)</u>
ELCA	Canadian Waterweed (<i>Elodea canadensis</i>)
POEP	Ribbon Leaf Pondweed (<i>Potamogeton epihydrus</i>)
PORO	Robbins Pondweed (<i>Potamogeton robinsii</i>)
NISP	Brittlewort (<i>Nitella spp.</i>)
VAAM	Eel-grass (<i>Vallisneria americana</i>)
UTVU	Common Bladderwort (<i>Utricularia vulgaris</i>)
ELNU	Western Waterweed (<i>Elodea nuttalia</i>)
ELSP	Hairgrass (<i>Eleocharis spp.</i>)



Map 2: Rake toss locations on Jones Pond on 31, July 2013. Open circles represent locations where no plants were detected, closed circles represent locations where plants were encountered on the rake. Data for rake tosses can be found on Table 2.



Map 3: Locations of the aquatic plant beds detected in Jones Pond during the surface survey on 31, July 2013. Data for plant beds can be found on Table 1.