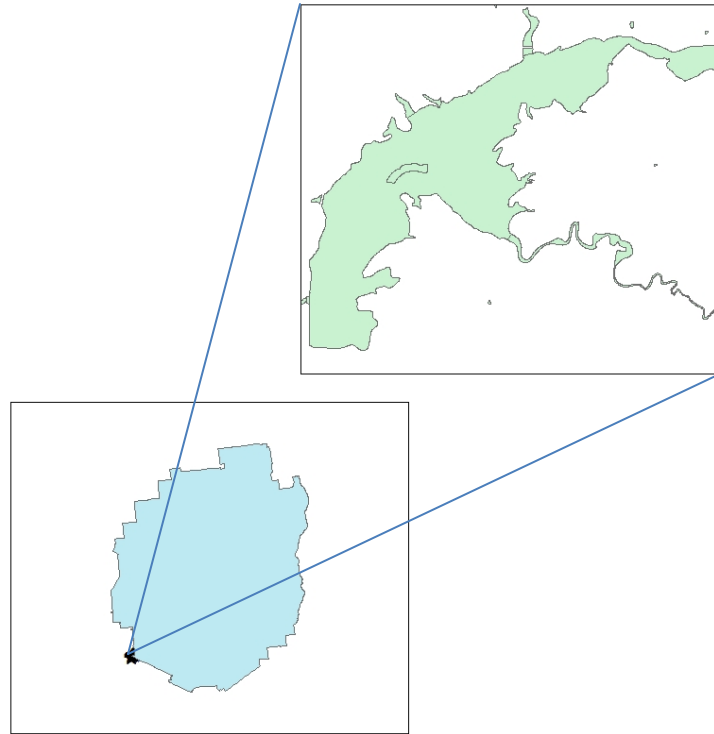


Hinckley Reservoir Aquatic Plant Survey 2013



Map 1: Location of Hinckley Reservoir in relation to the Adirondack Park.

Hinckley Reservoir is located in the Town of Hinckley in Herkimer County, New York (Map 1). This 2,854 acre lake was accessed through the use of a private boat launch on the Trail's End Campground. Motor boats can have access to this lake through the use of this boat launch.

An aquatic plant survey was conducted at Hinckley Reservoir on 5 August, 2013. Aquatic plant coverage was minimal, and was comprised of 12 plant beds that covered 35 acres or 1% of the lakes surface area. No aquatic invasive plants were observed during this survey. Nine different species of native aquatic plants were identified. Species most common in this lake were Knotty Pondweed (*Potamogeton nodosus*) and Hairgrass (*Eleocharis sp.*) (Table 1).

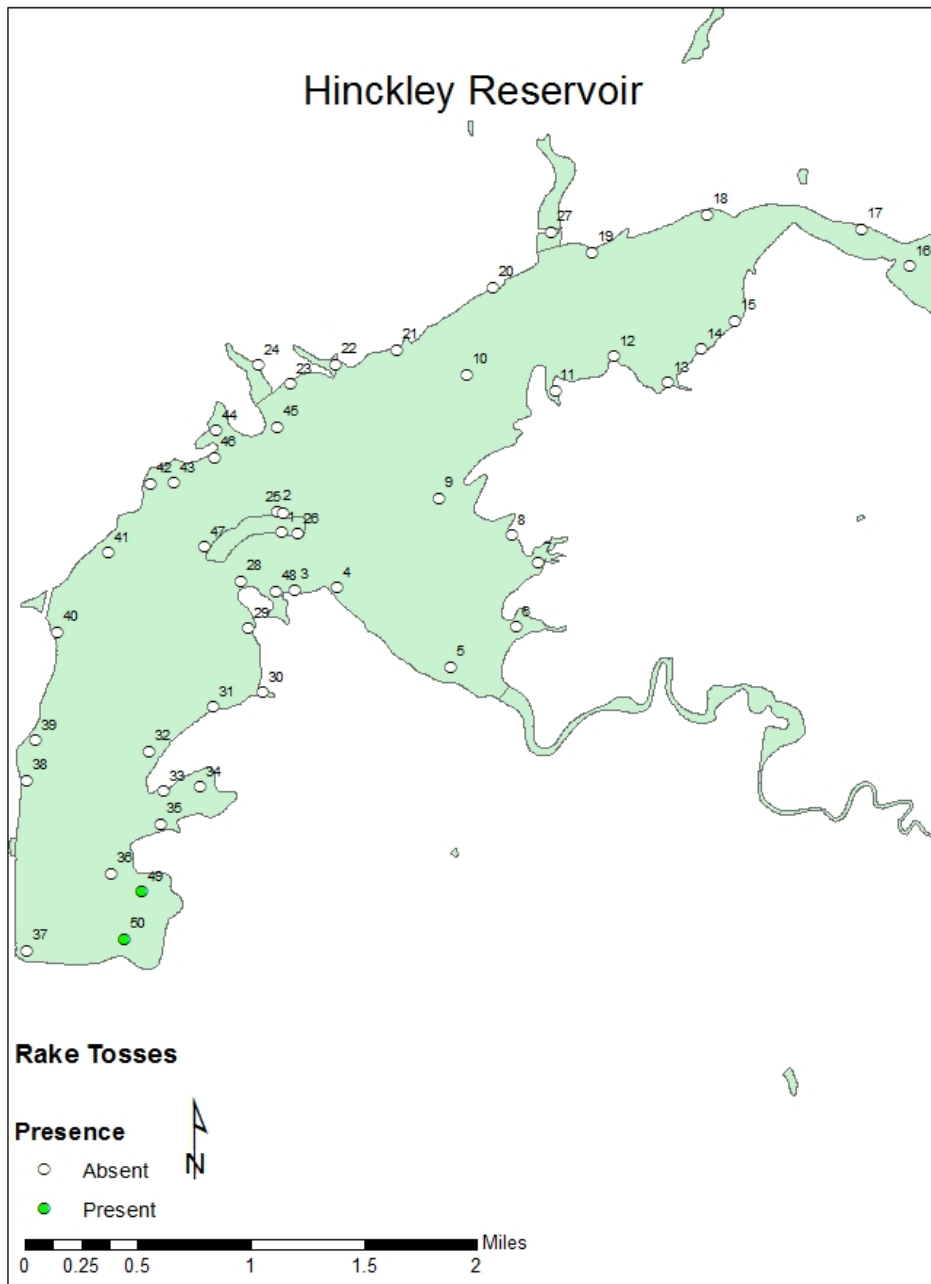
Of the 50 rake tosses deployed through the littoral zone of this lake, 2 had plants recovered. There were no plant species that were brought up on the rake that were not detected during the surface survey (Table 2).

Table 1: Abundance and area of aquatic plant beds in Hinckley Reservoir. Refer to Map 3 for plant bed locations. Abundance key: 1=RARE (<5%), 2=OCCASIONAL (6-15%), 3=PRESENT (16-25%), 4=COMMON (26-50%), 5=ABUNDANT(>50%).

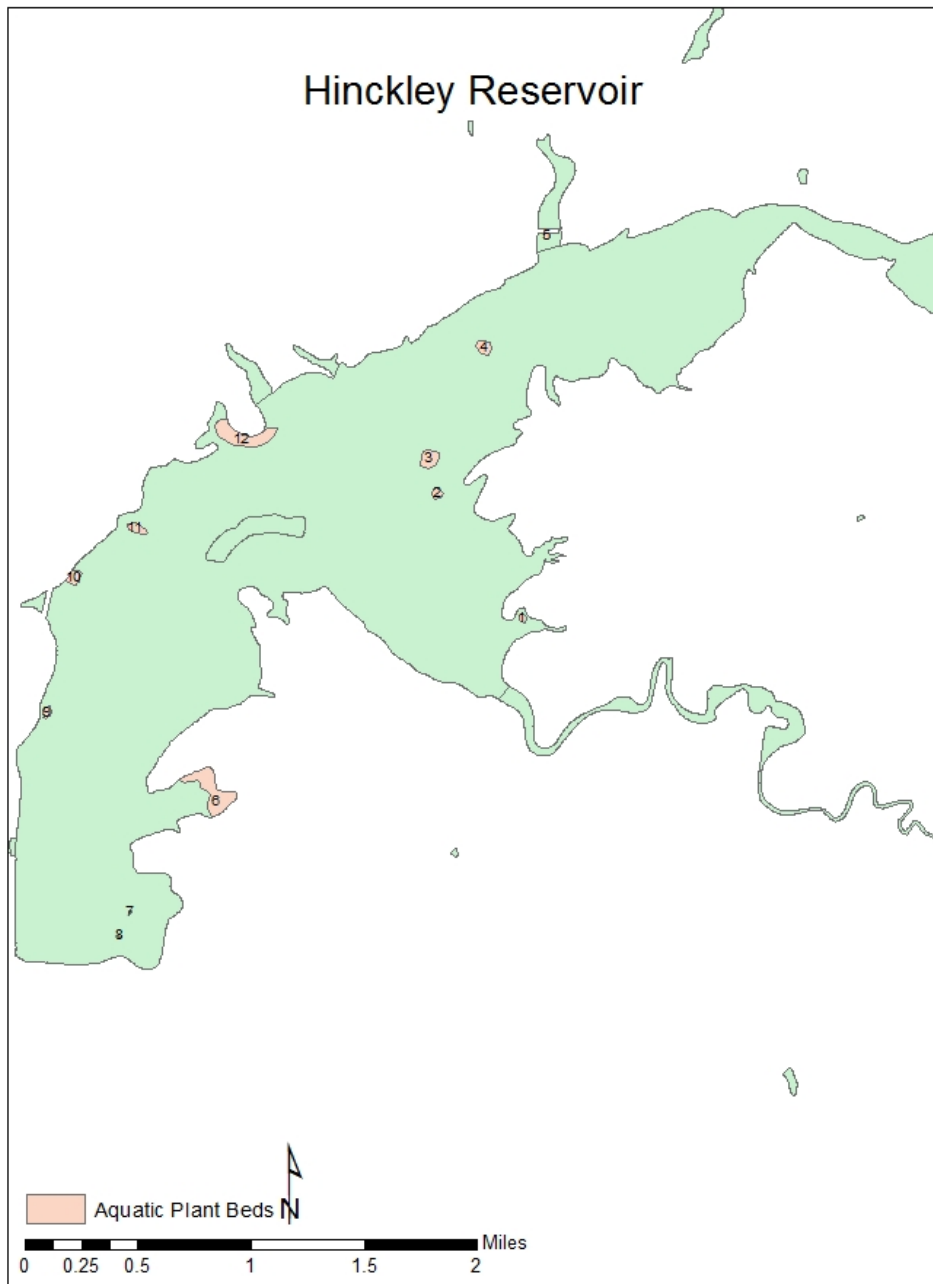
Bed #	Watershield (<i>Brasenia schreberi</i>)	Ribbon-leaf Pondweed (<i>Potamogeton epihydrus</i>)	Clasping-leaf Pondweed (<i>Potamogeton perfoliatus</i>)	Variable-leaf Pondweed (<i>Potamogeton gramineus</i>)	Small Pondweed (<i>Potamogeton pusillus</i>)	Knotty Pondweed (<i>Potamogeton nodosus</i>)	Pipewort (<i>Eriocaulon sp.</i>)	Hairgrass (<i>Eleocharis sp.</i>)	Polygonum sp. (<i>Polygonum sp.</i>)	Area (Acres)
1								4		0.6
2								4		1.0
3						4				3.1
4						4				2.1
5	1				2			4		0.4
6				1			1	4		12.4
7									1	0.1
8						1				0.1
9						1			1	0.9
10		1				1				1.9
11				1	1			1		1.6
12			1			1				10.4

Table 2. Species present on the rake, abundance, and depth at each of the rake toss locations that had plants recovered at Hinckley Reservoir. Refer to Map 2 for rake toss locations. Abundance key: 1=RARE (<5%), 2=OCCASIONAL (6-15%), 3=PRESENT (16-25%), 4=COMMON (26-50%), 5=ABUNDANT (>50%).

Rake Toss #	Hairgrass (<i>Eleocharis spp.</i>)	Depth (ft)
49	3	4
50	2	4



Map 2: Rake toss locations on Hinckley Reservoir on 5 August, 2013. Open circles represent locations where no plants were detected, closed circles represent locations where plants were encountered on the rake. Data for rake tosses can be found on Table 2.



Map 3: Locations of the aquatic plant beds detected in Hinckley Reservoir during the surface survey on August 5, 2013. Data for plant beds can be found on Table 1.