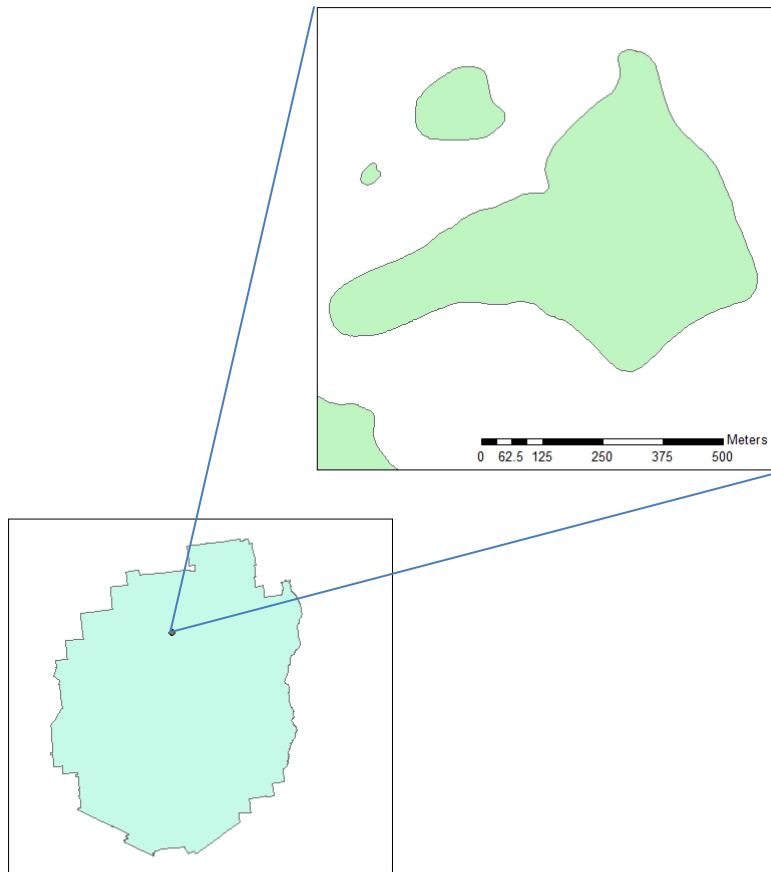


Green Pond Aquatic Plant Survey 2013



Map 1: Location of Green Pond in relation to the Adirondack Park.

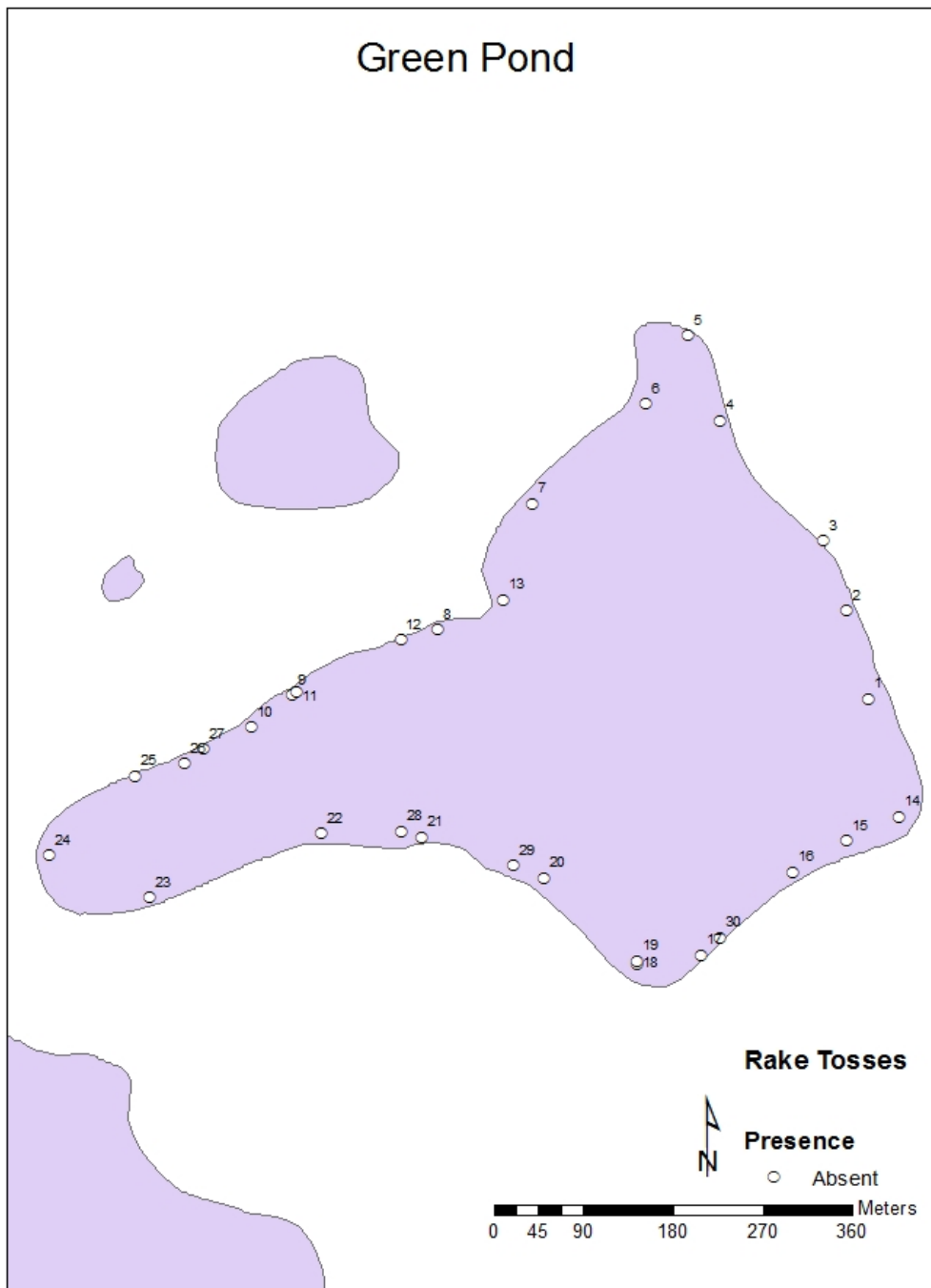
Green Pond is located in the Town of Santa Clara in southern Franklin County, New York (Map 1). This 59 acre lake was accessed through the use of a public canoe carry-in launch on NY Rt. 30. Motor boats do not have access to this lake through the use of this launch.

An aquatic plant survey was conducted at Green Pond on 25 July 2013. Aquatic plant coverage was minimal, and was comprised of 6 plant beds that covered 3 acres or 5% of the lakes surface area. There were no aquatic invasive plants observed during this survey. Four different species of native aquatic plants were identified. The most common species in this pond was Pipewort (*Eriocaulon sp.*) (Table 1).

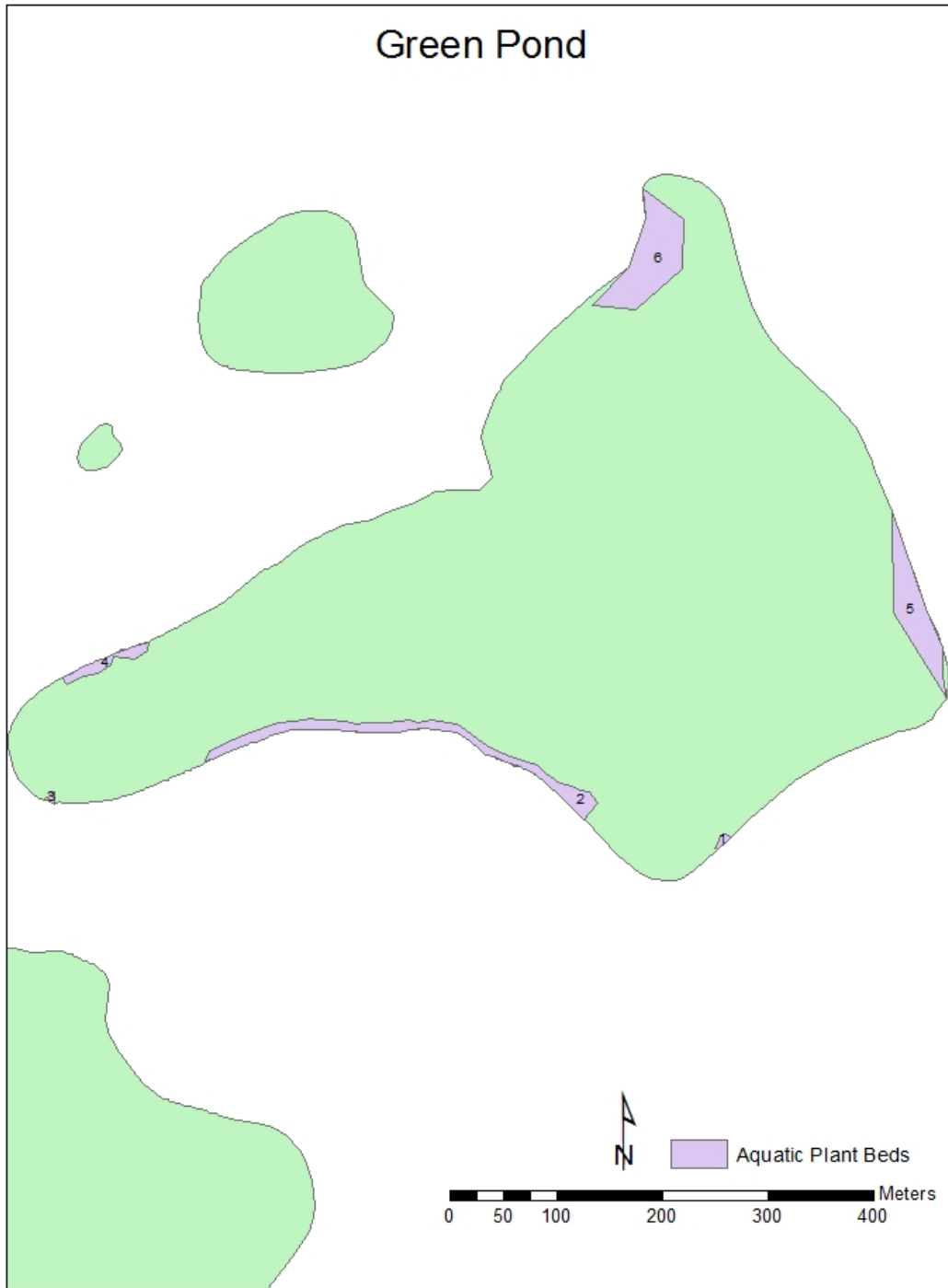
Of the 30 rake tosses deployed through the littoral zone of this lake, zero had plants recovered.

Table 1: Abundance and area of aquatic plant beds in Green Pond. Refer to Map 3 for plant bed locations. Abundance key: 1=RARE (<5%), 2=OCCASIONAL (6-15%), 3=PRESENT (16-25%), 4=COMMON (26-50%), 5=ABUNDANT(>50%).

Bed #	White Water Lily (<i>Nymphaea odorata</i>)	Yellow Water Lily (<i>Nuphar variegata</i>)	Knotweed (<i>Polygonum sp.</i>)	Pipewort (<i>Eriocaulon sp.</i>)	Area (acres)
1				3	0.02
2		3		2	0.88
3		4		4	0.01
4		2		2	0.18
5				3	0.76
6	1		3	2	1.06



Map 2: Rake toss locations on Green Pond on 25 July, 2013. Open circles represent locations where no plants were detected, closed circles represent locations where plants were encountered on the rake. Data for rake tosses can be found on Table 2.



Map 3: Locations of the aquatic plant beds detected in Green Pond during the surface survey on 25 July, 2013. Data for plant beds can be found on Table 1.