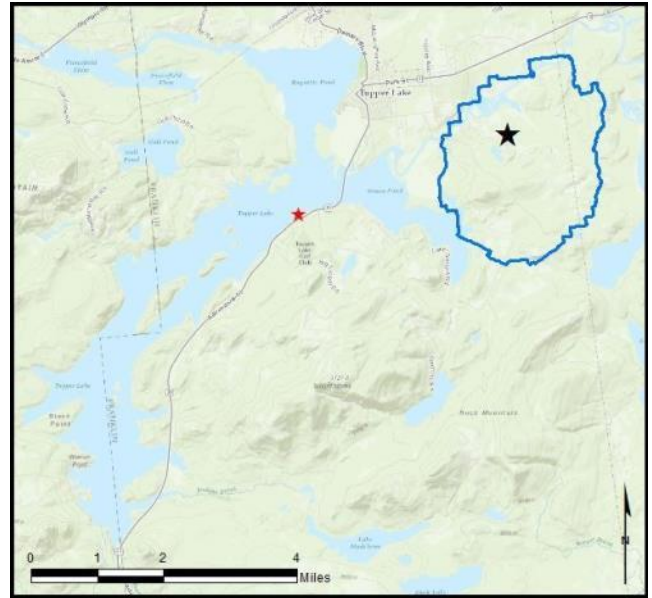


Tupper Lake

AIS intercepted: 1
Boats inspected: 1,238
Number of visitors: 2,564
Boats failing inspection: 20.8%

Dates of operation: May 29 – October 8
Total number of days covered: 92
Weekly coverage: 7 days
Visitors showing spread prevention awareness: 94%
Number of previously visited waterways: 48

AIS present in waterbody: variable-leaf milfoil
Stewardship history: 2009 - present



Watercraft	Boat Type										total # boats observed	total # boats inspected
	Barge	Canoe	Dock	Kayak	Motor	PWC	Row	Sail	SUP	Wind		
# boats observed	1	129	3	113	929	48	2	10	2	2	1239	1238
percentage of total boats	0.1%	10%	0.2%	9%	75%	4%	0.2%	1%	0.2%	0.2%	100%	100%

Boats observed at launch, including those not inspected. PWC=personal watercraft, SUP=stand-up paddleboard, Wind=windsurfer.

total # visitors	organisms found			total organisms	# boats dirty	# boats w/AIS	# of inspections	% of inspected boats dirty	% of inspected boats w/AIS
	entering	leaving	roadside						
2564	84	197	--	281	258	1	1238	20.8%	0.1%

Boats dirty = watercraft with any organic material, invasive, non-invasive or unknown.

Visitor Responses	AIS spread prevention awareness											# groups asked
	yes	Inspect	Wash	Drain	Bait	LW	Dry	Decon	same lake	first/frozen	didn't ask	
# groups	970	501	617	329	4	103	368	11	138	88	70	1033
percentage of total groups asked	94%	48%	60%	32%	0.4%	10%	36%	1%	13%	9%	NA	

Yes = showed AIS spread prevention awareness; Drain = drained bilge; Bait = emptied bait bucket/disposed of bait; LW = drained livewell; Dry = dried boat; Decon = visited decon station; Same Lake = boat only goes in this lake; First/Frozen = first launch of the season or frozen boat.

Organisms Removed	Organism Type									total # AIS	% of inspected boats w/AIS
	Non-invasive	CLP*	HYD*	EWM*	VLM*	QUA*	SWF*	WC*	ZM*		
# organisms	280	0	0	0	1	0	0	0	0	1	0.1%
percentage of total orgs	100%	0%	0%	0%	0.4%	0%	0%	0%	0%		

Non-invasive = native aquatic or terrestrial material; CLP = curly-leaf pondweed; HYD = hydrilla; EWM = Eurasian watermilfoil; VLM = variable-leaf milfoil; QUA = quagga mussel; SWF = spiny waterflea; WC = water chestnut; ZM = zebra mussel; */AIS = aquatic invasive species.

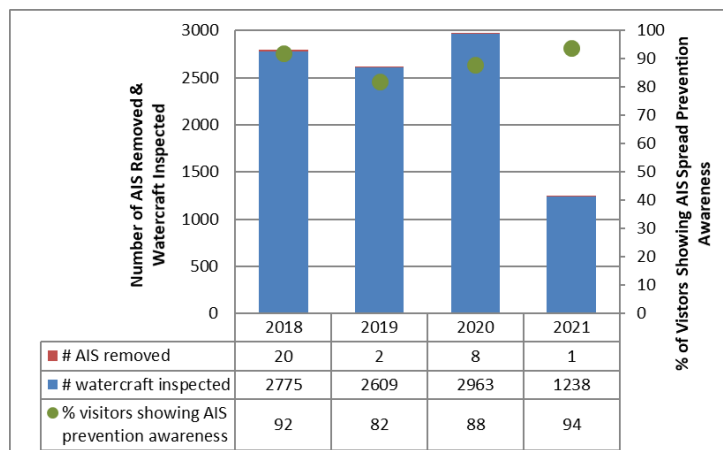
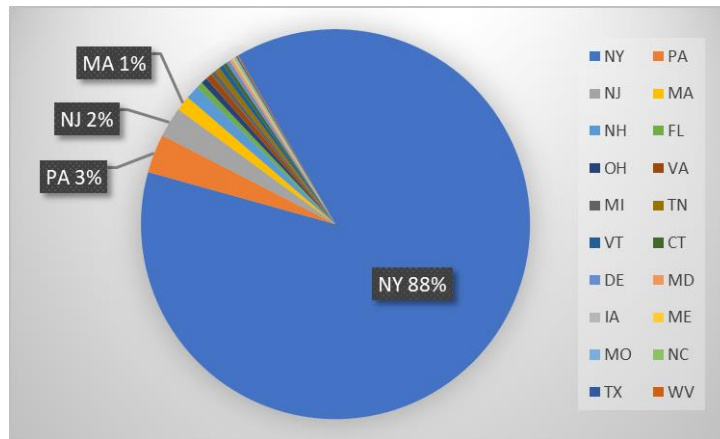
Aquatic Invasive Species Intercepted by Stewards	# found on boats launching	Previous Waterway	# found on boats retrieving	Previous Waterway
variable-leaf milfoil	1	Cranberry Lake (1)	0	N/A
Totals	1		0	

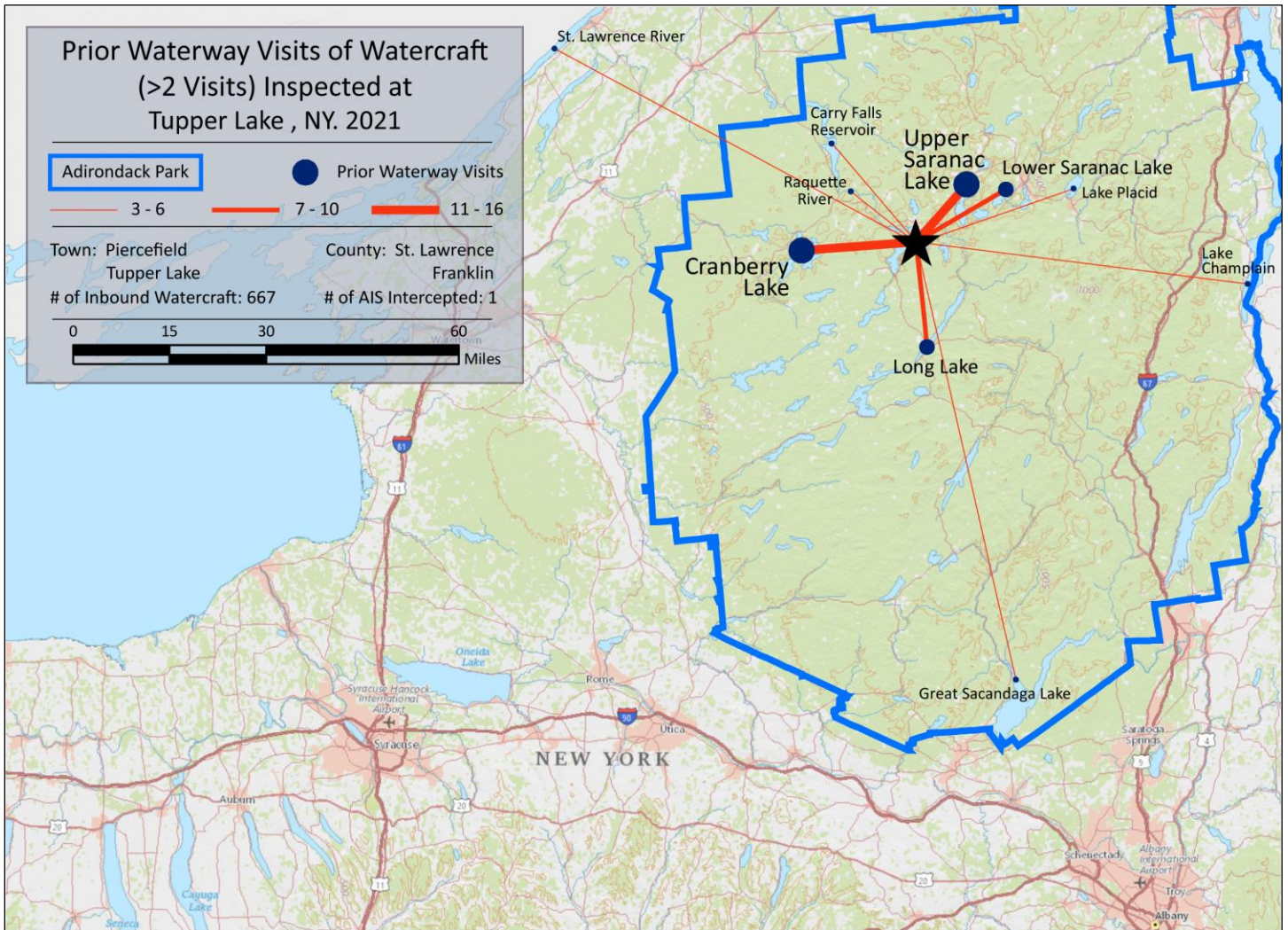
Previous Waterways for Launching Boats	# visits
NONE	266
SAME LAKE - PREVIOUS VISIT	260
Upper Saranac Lake	16
Cranberry Lake	11
NOT ASKED	11
Lower Saranac Lake	10
Long Lake	8
Raquette River, NY	6
UNKNOWN (boater doesn't know)	6
Lake Champlain	5
Carry Falls Reservoir	4
Great Sacandaga Lake	3
Lake Placid	3
RENTAL	3
St. Lawrence River	3
Atlantic Ocean	2
Butterfield Lake	2
Carnegie Lake, Princeton, NJ	2
Fish Creek Ponds	2

Previous Waterways for Launching Boats	# visits
Lake George	2
Lake Ontario	2
Long Island Sound	2
Middle Saranac Lake	2
Oneida Lake	2
Owasco Lake	2
Raquette Lake	2
Upper St. Regis Lake	2
Adirondacks (unspecified)	1
Big Moose Lake	1
Blue Mountain Lake	1
Buck Pond (Rainbow Lake/Lake Kushaqua)	1
Cossayuna Lake (Washington County)	1
Findley Lake (Chatauqua County)	1
Finger Lakes (unspecified)	1
Franklin Falls Pond (Franklin County)	1
Heart Lake (Essex County)	1
Hudson River	1

Previous Waterways for Launching Boats	# visits
Indian Lake (Franklin County)	1
Indian Lake (Hamilton County)	1
Inlet (Franklin County)	1
Lake Clear	1
Lake Colby	1
Lake Pleasant	1
Long Lake (Oneida County)	1
Lower St. Regis Lake	1
Meacham Lake	1
Mohawk River	1
Paradox Lake	1
Piseco Lake	1
Red Lake (Jefferson County)	1
Rollins Pond	1
Saranac River	1
Second Pond	1
Simon Pond (Franklin County)	1
Trap Pond, DE	1
Total	667

State of Motorized Boat Registration
(n=963)





Tupper Lake Boat Launch