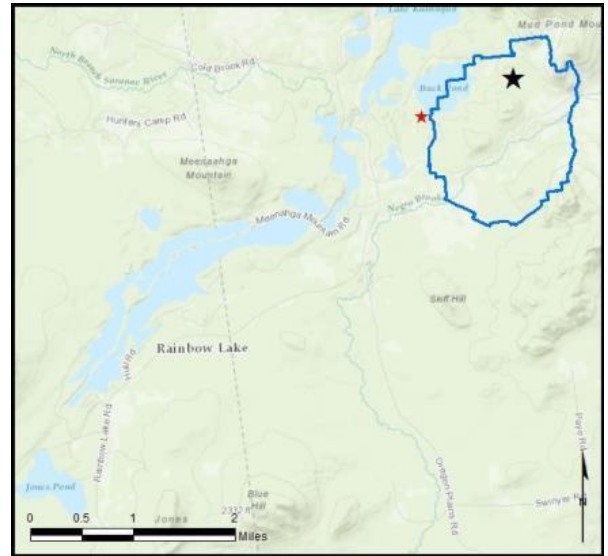


Rainbow Lake - Buck Pond

AIS intercepted: 2
Boats inspected: 1,637
Number of visitors: 2,529
Boats failing inspection: 11.2%

Dates of operation: May 29 – September 6
Total number of days covered: 95
Weekly coverage: 7 days
Visitors showing spread prevention awareness: 88%
Number of previously visited waterways: 77

AIS present in waterbody: none
Stewardship history: 2005 - present
Partnership: Rainbow Lake Association



Watercraft	Boat Type										total # boats observed	total # boats inspected
	Barge	Canoe	Dock	Kayak	Motor	PWC	Row	Sail	SUP	Wind		
# boats observed	1	382	1	818	369	7	41	4	27	1	1651	1637
percentage of total boats	0.1%	23%	0.1%	50%	22%	0.4%	2%	0.2%	2%	0.1%	100%	99%

Boats observed at launch, including those not inspected. PWC=personal watercraft, SUP=stand-up paddleboard, Wind=windsurfer.

total # visitors	organisms found			total organisms	# boats dirty	# boats w/AIS	# of inspections	% of inspected boats dirty	% of inspected boats w/AIS
	entering	leaving	roadside						
2529	61	151	--	212	183	2	1637	11.2%	0.1%

Boats dirty = watercraft with any organic material, invasive, non-invasive or unknown.

Visitor Responses	AIS spread prevention awareness											# groups asked
	yes	Inspect	Wash	Drain	Bait	LW	Dry	Decon	same lake	first/frozen	didn't ask	
# groups	545	70	293	14	1	1	169	15	58	16	485	618
percentage of total groups asked	88%	11%	47%	2%	0.2%	0.2%	27%	2%	9%	3%	NA	

Yes = showed AIS spread prevention awareness; Drain = drained bilge; Bait = emptied bait bucket/disposed of bait; LW = drained livewell; Dry = dried boat; Decon = visited decon station; Same Lake = boat only goes in this lake; First/Frozen = first launch of the season or frozen boat.

Organisms Removed	Organism Type									total # AIS	% of inspected boats w/AIS
	Non-invasive	CLP*	HYD*	EWM*	VLM*	QUA*	SWF*	WC*	ZM*		
# organisms	210	0	0	1	0	0	0	1	0	2	0.1%
percentage of total orgs	99%	0%	0%	0.5%	0%	0%	0%	0.5%	0%		

Non-invasive = native aquatic or terrestrial material; CLP = curly-leaf pondweed; HYD = hydrilla; EWM = Eurasian watermilfoil; VLM = variable-leaf milfoil; QUA = quagga mussel; SWF = spiny waterflea; WC= water chestnut; ZM = zebra mussel; */AIS = aquatic invasive species.

Aquatic Invasive Species Intercepted by Stewards	# found on boats launching	Previous Waterway	# found on boats retrieving	Previous Waterway
Eurasian watermilfoil	1	Silver Lake, Clinton County (1)	0	N/A
water chestnut	1	Mohawk River (1)	0	N/A
Totals	2		0	

Previous Waterways for Launching Boats	# visits
SAME LAKE - PREVIOUS VISIT	349
NONE	277
RENTAL	105
UNKNOWN (boater doesn't know)	26
Lake Champlain	17
Lower Saranac Lake	14
Lower St. Regis Lake	13
Saranac River	13
Rollins Pond	12
Raquette River, NY	11
Upper Saranac Lake	11
Chazy Lake	10
Lake Placid	9
Meacham Lake	8
Cranberry Lake	7
Fish Creek Ponds	7
Middle Saranac Lake	7
NOT ASKED	7
Cayuga Lake	6
Osgood Pond	6
Deer River Flow (Franklin County)	5
St. Lawrence River	5
St. Regis River, NY	5
Mud Pond (Franklin County)	4
Ogunquit River, ME	4
Taylor Pond (Clinton County)	4
Upper St. Regis Lake	4
Atlantic Ocean	3

Previous Waterways for Launching Boats	# visits
Chubb River	3
Lake Erie	3
Lake Flower	3
Lake Ontario	3
Little Clear Pond	3
Loon Lake (Franklin County)	3
Stony Creek Ponds (Franklin County)	3
Tupper Lake	3
Chateaugay Lake	2
Clear Pond (St Lawrence County)	2
Delaware River	2
Glenwood Lake (Orleans County)	2
Great Chazy River, NY	2
Horseshoe Lake (St Lawrence County)	2
Jones Pond (Franklin County)	2
Lake Alice (Clinton County)	2
Lake Eaton	2
Lewey Lake (Hamilton County)	2
Shelburne Pond, Shelburne, VT	2
Silver Lake, Barnard, VT	2
Skaneateles Lake	2
Yankee Lake (Sullivan County)	2
Canada Lake	1
Conesus Lake	1
Connecticut River	1
Dryden Lake (Tompkins County)	1
Fern Lake (Clinton County)	1
Finger Lakes (unspecified)	1

Previous Waterways for Launching Boats	# visits
Fish Pond (Franklin County)	1
Follensby Clear Pond	1
Forked Lake	1
Franklin Falls Pond (Franklin County)	1
Great Sacandaga Lake	1
Gulf of Mexico	1
Heart Lake (Essex County)	1
Hinckley Reservoir	1
Hoel Pond	1
Hudson River	1
Keuka Lake	1
Lake Anna, Louisa, VA	1
Long Pond (Essex County)	1
Mendon Ponds (Monroe County)	1
Mohawk River	1
Moose Pond Campground (Essex County)	1
Mountain View Lake (Franklin County)	1
North Lake (Herkimer County)	1
Oswego River, NY	1
Polliwog Pond (Franklin County)	1
Putnam Lake (Putnam County)	1
Raquette Lake	1
REFUSED TO ANSWER	1
Rich Lake (Essex County)	1
Round Valley Reservoir, Clinton Twsp, NJ	1
Second Pond	1
Stillwater Reservoir	1
Waterbury Reservoir, Waterbury, VT	1
Total	1035

State of Motorized Boat Registration
(n=439)

