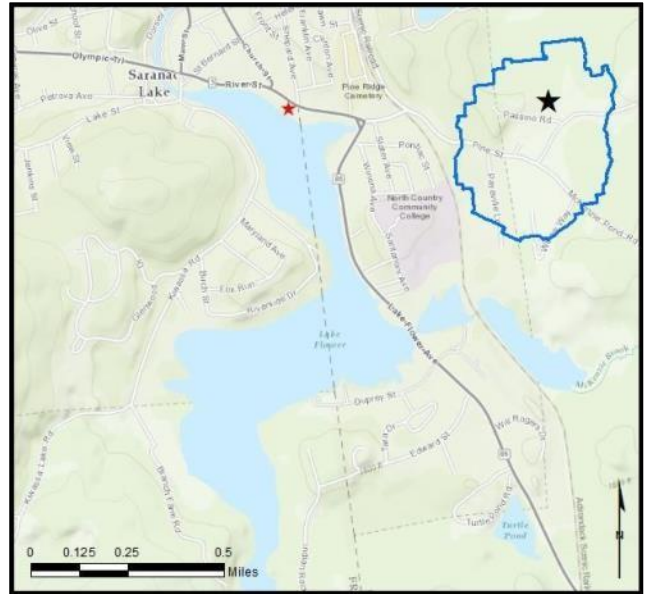


Lake Flower

AIS intercepted: 31
Boats inspected: 2,235
Number of visitors: 4,495
Boats failing inspection: 3.7%

Dates of operation: May 29 – October 7
Total number of days covered: 101
Weekly coverage: 7 days
Visitors showing spread prevention awareness: 89%
Number of previously visited waterways: 76

AIS present in waterbody: curly-leaf pondweed, Eurasian watermilfoil, variable-leaf milfoil
Stewardship history: 2011 - present



Watercraft	Boat Type										total # boats observed	total # boats inspected
	Barge	Canoe	Dock	Kayak	Motor	PWC	Row	Sail	SUP	Wind		
# boats observed	3	170	4	429	1487	175	13	4	33	0	2318	2235
percentage of total boats	0.1%	7%	0.2%	19%	64%	8%	1%	0.2%	1%	0%	100%	96%

Boats observed at launch, including those not inspected. PWC=personal watercraft, SUP=stand-up paddleboard, Wind=windsurfer.

total # visitors	organisms found			total organisms	# boats dirty	# boats w/AIS	# of inspections	% of inspected boats dirty	% of inspected boats w/AIS
	entering	leaving	roadside						
4495	18	87	--	105	82	30	2235	3.7%	1.3%

Boats dirty = watercraft with any organic material, invasive, non-invasive or unknown.

Visitor Responses	AIS spread prevention awareness											# groups asked
	yes	Inspect	Wash	Drain	Bait	LW	Dry	Decon	same lake	first/frozen	didn't ask	
# groups	1673	620	656	434	0	43	669	31	243	128	126	1887
percentage of total groups asked	89%	33%	35%	23%	0%	2%	35%	2%	13%	7%	NA	

Yes = showed AIS spread prevention awareness; Drain = drained bilge; Bait = emptied bait bucket/dispensed of bait; LW = drained livewell; Dry = dried boat; Decon = visited decon station; Same Lake = boat only goes in this lake; First/Frozen = first launch of the season or frozen boat.

Organisms Removed	Organism Type									total # AIS	% of inspected boats w/AIS
	Non-invasive	CLP*	HYD*	EWM*	VLM*	QUA*	SWF*	WC*	ZM*		
# organisms	74	0	0	7	24	0	0	0	0	31	1.3%
percentage of total orgs	70%	0%	0%	7%	23%	0%	0%	0%	0%		

Non-invasive = native aquatic or terrestrial material; CLP = curly-leaf pondweed; HYD = hydrilla; EWM = Eurasian watermilfoil; VLM = variable-leaf milfoil; QUA = quagga mussel; SWF = spiny waterflea; WC = water chestnut; ZM = zebra mussel; */AIS = aquatic invasive species.

Aquatic Invasive Species Intercepted by Stewards	# found on boats launching	Previous Waterway	# found on boats retrieving	Previous Waterway
Eurasian watermilfoil	2	Lake Flower (1), None (1)	5	Lake Flower (5)
variable-leaf milfoil	2	Lake Flower (2)	22	Lake Flower (22)
Totals	4		27	

Previous Waterways for Launching Boats	# visits
NONE	476
SAME LAKE - PREVIOUS VISIT	377
NOT ASKED	68
Upper Saranac Lake	43
Lake Placid	38
Lower Saranac Lake	36
Mirror Lake	26
UNKNOWN (boater doesn't know)	23
Lake Champlain	19
Adirondacks (unspecified)	17
Lake Colby	17
Fish Creek Ponds	12
Tupper Lake	11
unspecified lake in New York	10
Second Pond	8
Buck Pond (Rainbow Lake/Lake Kushaqua)	6
Erie Canal	6
Raquette River, NY	6
Saint Regis Pond (Franklin County)	6
Lake Dunmore, Salisbury, VT	5
Moody Pond (Franklin County)	5
REFUSED TO ANSWER	5
Upper St. Regis Lake	5
Blue Mountain Lake	4
Chateaugay Lake	4
Cranberry Lake	4
Lake George	4
Long Island Sound	4
Newcomb Lake (Essex County)	4

Previous Waterways for Launching Boats	# visits
Onota Lake, Pittsfield, MA	4
RENTAL	4
Saranac River	4
Schroon Lake	4
St. Lawrence River	4
Black Pond (Franklin County)	3
Buffalo River	3
Chazy Lake	3
Fern Lake (Clinton County)	3
Franklin Falls Pond (Franklin County)	3
Kiwassa Lake	3
Lake Clear	3
Lake Erie	3
Lincoln Pond (Essex County)	3
Long Lake	3
Atlantic Ocean	2
Ausable River	2
Canandaigua Lake	2
Chapel Pond (Essex County)	2
Delta Lake	2
Great South Bay	2
Hoel Pond	2
Hudson River	2
Lake Lonely (Saratoga County)	2
Lake of the Woods (Jefferson County)	2
Lower St. Regis Lake	2
Middle Pond (Franklin County)	2
Middle Saranac Lake	2

Previous Waterways for Launching Boats	# visits
Moose Pond (Hamilton County)	2
Niagara River, NY	2
Saranac Chain of Lakes (unspecified)	2
Skaneateles Lake	2
St. Regis Canoe area (or St. Regis Pond)	2
Stony Creek Ponds (Franklin County)	2
Taylor Pond (Clinton County)	2
Barnum Pond (Franklin County)	1
Big Moose River, NY	1
Cayuga Lake	1
Forked Lake	1
Gilbert Lake (Otsego County)	1
Great Sacandaga Lake	1
Heart Lake (Essex County)	1
Indian Lake (Franklin County)	1
Lake Ontario	1
Lake Pleasant	1
Lake Welch (Rockland County)	1
Little Clear Pond	1
Little Moose Lake (Hamilton County)	1
Loon Lake (Franklin County)	1
Meacham Lake	1
Moose Pond Campground (Essex County)	1
Muller Pond (Essex County)	1
Round Lake (Essex County)	1
Star Lake (St Lawrence County)	1
Union Falls Pond (Clinton/Franklin Counties)	1
Wingfoot Lake, Suffield Township, OH	1
Total	1360

State of Motorized Boat Registration
(n=1,644)

