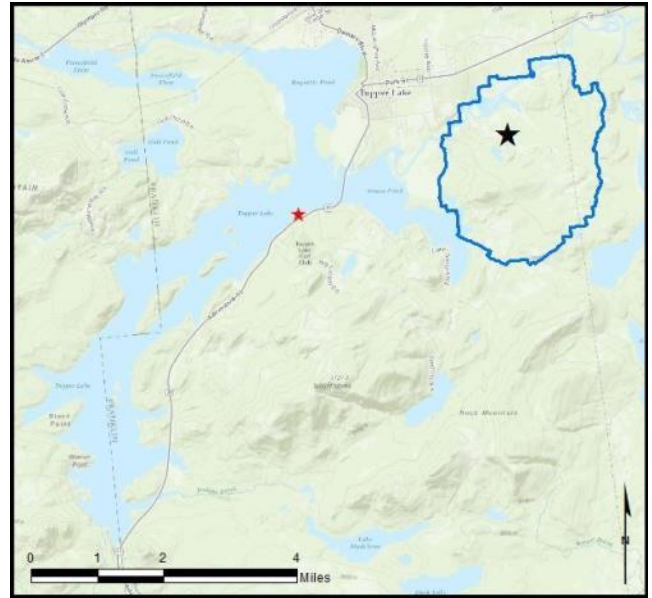


Tupper Lake

AIS intercepted: 1
Boats inspected: 1,340
Number of visitors: 2,986
Boats failing inspection: 0.4%

Dates of operation: May 28 – October 10
Total number of days covered: 88
Weekly coverage: 5 days
Visitors showing spread prevention awareness: 90%
Number of previously visited waterways: 24

AIS present in waterbody: variable-leaf milfoil
Stewardship history: 2009 - present



Watercraft	Boat Type										total # boats observed	total # boats inspected
	Barge	Canoe	Dock	Kayak	Motor	PWC	Row	Sail	SUP	Wind		
# boats observed	1	112	7	48	1108	64	4	4	0	0	1348	1340
percentage of total boats	0%	8%	1%	4%	82%	5%	0%	0%	0%	0%	100%	99%

Boats observed at launch, including those not inspected. PWC=personal watercraft, SUP=stand-up paddleboard, Wind=windsurfer.

total # visitors	organisms found			total organisms	# boats dirty	# boats w/AIS	# of inspections	% of inspected boats dirty	% of inspected boats w/AIS
	entering	leaving	roadside						
2986	0	8	--	8	6	1	1340	0.4%	0.1%

Boats dirty = watercraft with any organic material, invasive, non-invasive or unknown.

Visitor Responses	AIS spread prevention awareness											# groups asked
	yes	Inspect	Wash	Drain	Bait	LW	Dry	Decon	same lake	first/frozen	didn't ask	
# groups	1104	36	341	20	3	6	91	14	570	166	10	1221
percentage of total groups asked	90%	3%	28%	2%	0%	0%	7%	1%	47%	14%	NA	

Yes = showed AIS spread prevention awareness; Drain = drained bilge; Bait = emptied bait bucket/disposed of bait; LW = drained livewell; Dry = dried boat; Decon = visited decon station; Same Lake = boat only goes in this lake; First/Frozen = first launch of the season or frozen boat.

Organisms Removed	Organism Type							total # AIS	% of inspected boats w/AIS
	Non-invasive	CLP*	EWM*	VLM*	SWF*	WC*	ZM*		
# organisms	7	0	0	1	0	0	0	1	0.1%
percentage of total orgs	88%	0%	0%	13%	0%	0%	0%		

Non-invasive = native aquatic or terrestrial material; CLP = curly-leaf pondweed; EWM = Eurasian watermilfoil; VLM = variable-leaf milfoil; SWF = spiny waterflea; WC= water chestnut; ZM = zebra mussel; */AIS = aquatic invasive species.

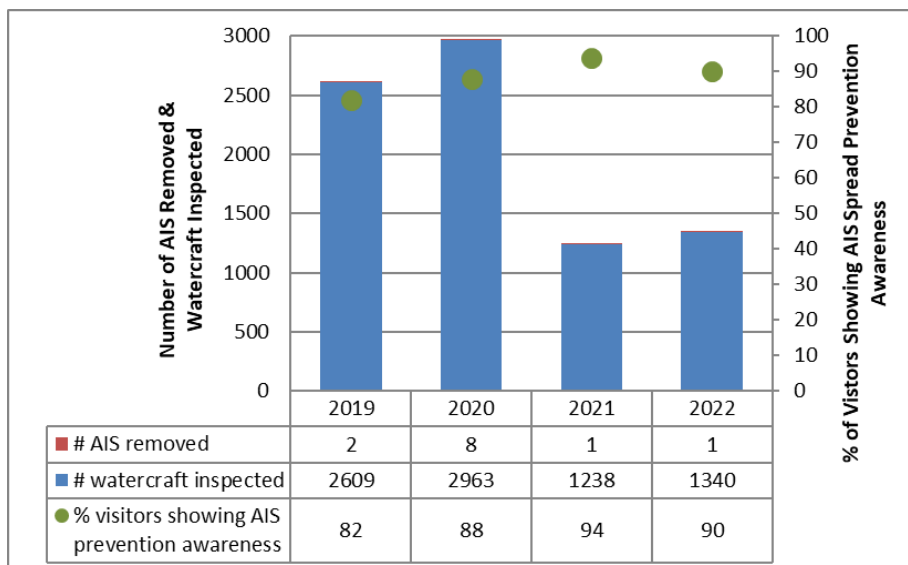
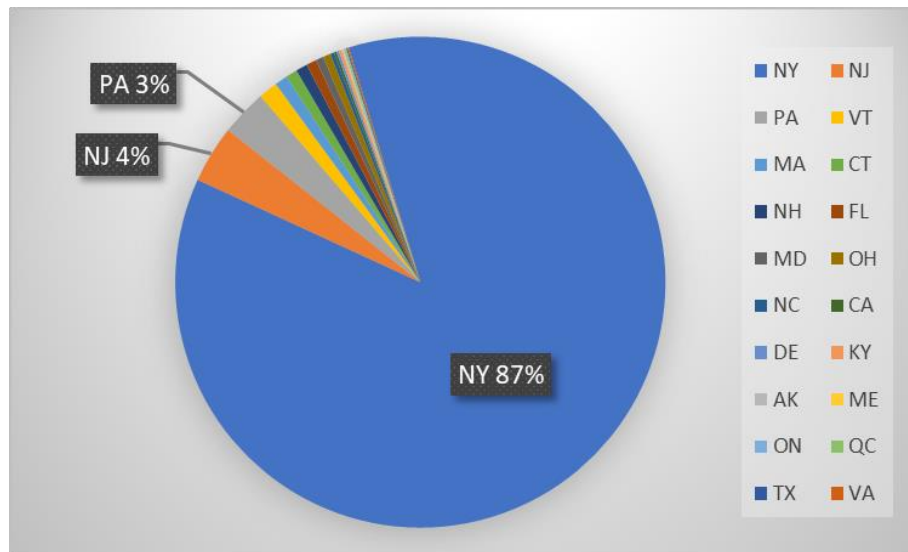
Aquatic Invasive Species Intercepted by Stewards	# found on boats launching	Previous Waterway	# found on boats retrieving	Previous Waterway
variable-leaf milfoil	0	N/A	1	Tupper Lake (1)
Totals	0		1	

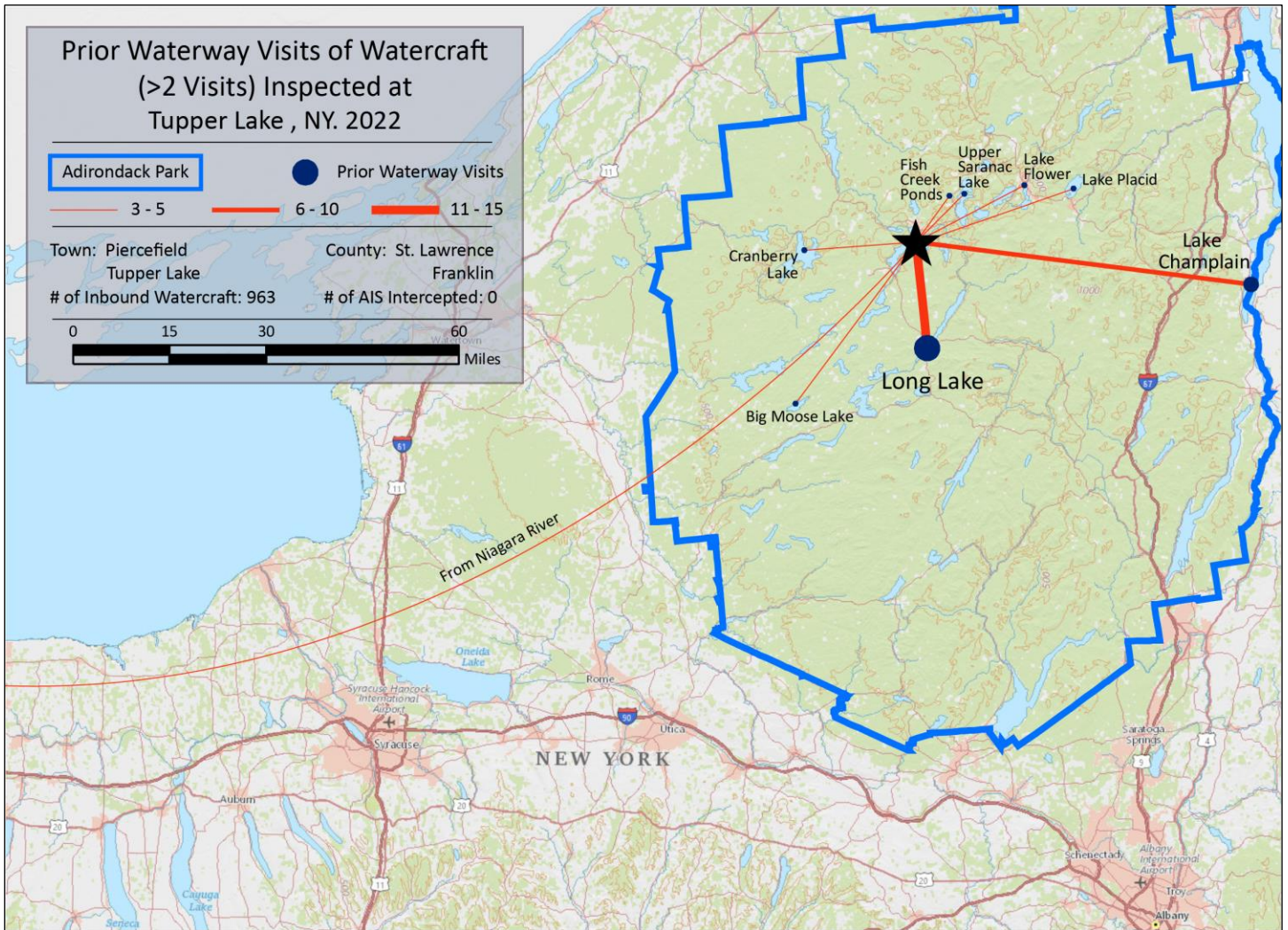
Previous Waterways for Launching Boats	# visits
SAME LAKE - PREVIOUS VISIT	582
NONE	297
Long Lake	15
Lake Champlain	6
REFUSED TO ANSWER	6
Cranberry Lake	5
Niagara River, NY	5
Unspecified Private Owned	5
Upper Saranac Lake	5
Big Moose Lake	4

Previous Waterways for Launching Boats	# visits
Lake Placid	4
Raquette Pond (Franklin County)	4
Fish Creek Ponds	3
Lake Flower	3
Lake George	2
Little Long Pond (Franklin County)	2
UNKNOWN (boater doesn't know)	2
Brant Lake	1
Buck Pond (Rainbow Lake/Lake Kushaqua)	1
Hunt Lake (Saratoga County)	1

Previous Waterways for Launching Boats	# visits
Indian Lake (Franklin County)	1
Long Pond St. Regis Canoe Area (Franklin)	1
Merrymeeting Lake, New Durham, NH	1
Mohawk River	1
NOT ASKED	1
Oneida Lake	1
Raquette River, NY	1
Second Pond	1
St. Lawrence River	1
Stillwater Reservoir	1
Total	963

State of Motorized Boat Registration
(n=1,184)





Tupper Lake Boat Launch