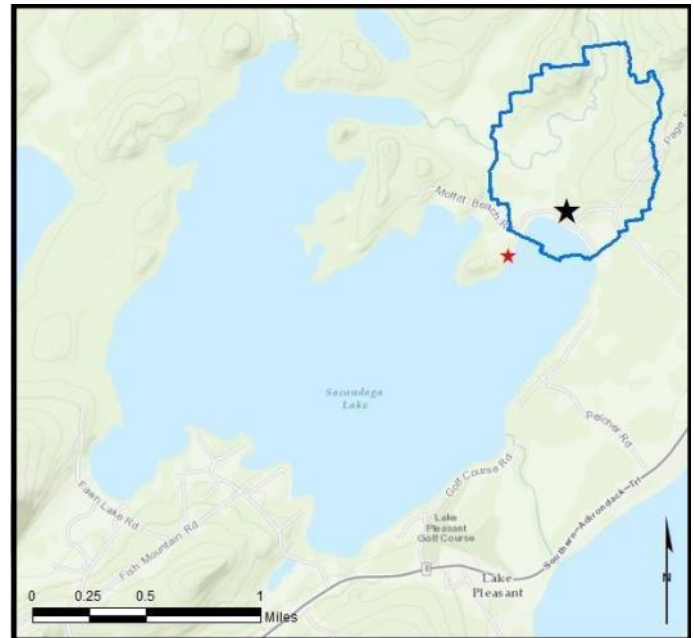


Sacandaga Lake (Moffitt Beach)

AIS intercepted: 1
Boats inspected: 848
Number of visitors: 2,000
Boats failing inspection: 0.1%

Dates of operation: May 26 – September 4
Total number of days covered: 90
Weekly coverage: 5-7 days
Visitors showing spread prevention awareness: 88%
Number of previously visited waterways: 25

AIS present in waterbody: spiny waterflea
Stewardship history: 2015 - present
Partnership: Lake Pleasant Shoreowners Association,
 Town of Lake Pleasant



Watercraft	Boat Type										total # boats observed	total # boats inspected
	Barge	Canoe	Dock	Kayak	Motor	PWC	Row	Sail	SUP	Wind		
# boats observed	2	8	3	58	663	111	2	2	0	1	850	848
percentage of total boats	0.2%	1%	0.4%	7%	78%	13%	0.2%	0.2%	0%	0.1%	100%	99.8%

Boats observed at launch, including those not inspected. PWC=personal watercraft, SUP=stand-up paddleboard, Wind=windsurfer.

total # visitors	organisms found			total organisms	# boats dirty	# boats w/AIS	# of inspections	% of inspected boats dirty	% of inspected boats w/AIS
	entering	leaving	roadside						
2000	1	0	0	1	1	1	848	0.1%	0.1%

Boats dirty = watercraft with any organic material, invasive, non-invasive or unknown.

Visitor Responses	AIS spread prevention awareness											# groups asked
	yes	Inspect	Wash	Drain	Bait	LW	Dry	Decon	same lake	first/frozen	didn't ask	
# groups	700	16	44	24	1	7	65	17	225	372	24	791
percentage of total groups asked	88%	2%	6%	3%	0%	1%	8%	2%	28%	47%	NA	

Yes = showed AIS spread prevention awareness; Drain = drained bilge; Bait = emptied bait bucket/disposed of bait; LW = drained livewell; Dry = dried boat; Decon = visited decon station; Same Lake = boat only goes in this lake; First/Frozen = first launch of the season or frozen boat.

Organisms Removed	Organism Type									total # AIS	% of inspected boats w/AIS
	Non-invasive	BN*	CLP*	HYD*	EWM*	VLM*	SWF*	WC*	ZM*		
# organisms	0	0	0	0	0	0	0	1	0	1	0.1%
percentage of total orgs	0%	0%	0%	0%	0%	0%	0%	100%	0%		

Non-invasive = native aquatic or terrestrial material; BN = brittle naiad; CLP = curly-leaf pondweed; HYD = hydrilla; EWM = Eurasian watermilfoil; VLM = variable-leaf milfoil; SWF = spiny/fishhook waterflea; WC = water chestnut; ZM = zebra mussel; */AIS = aquatic invasive species.

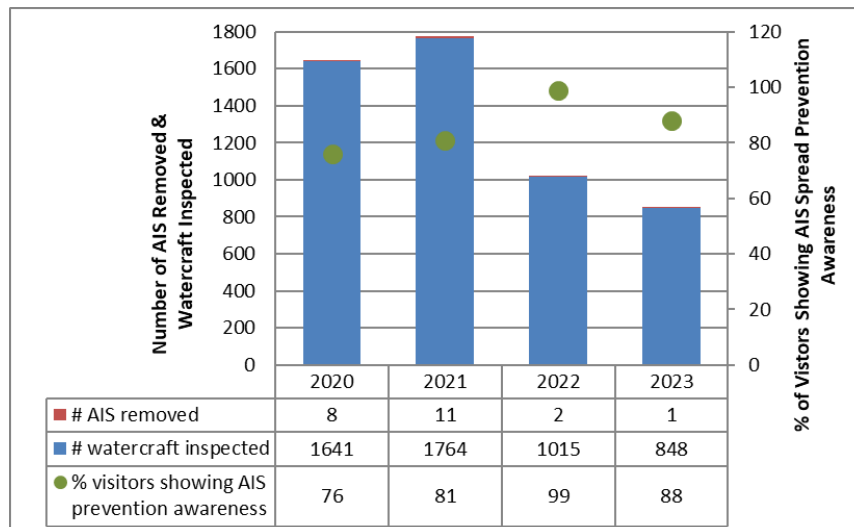
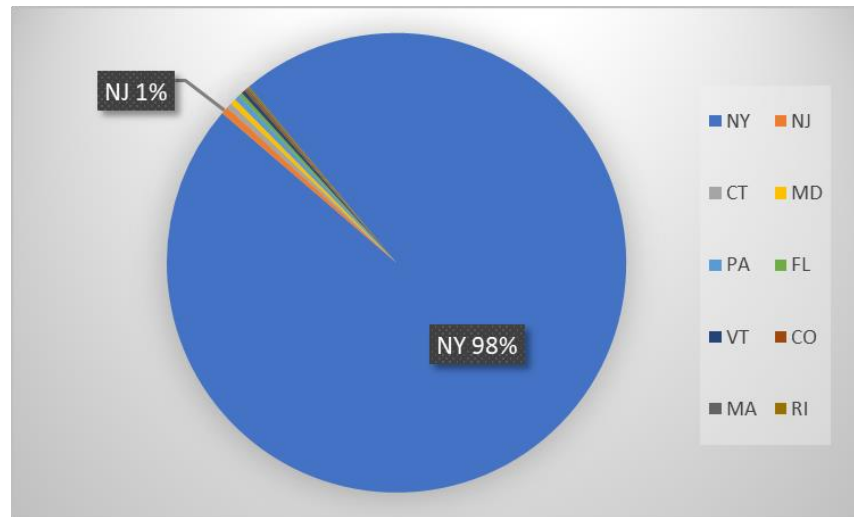
Aquatic Invasive Species Intercepted by Stewards	# found on boats launching	Previous Waterway	# found on boats retrieving	Previous Waterway
water chestnut	1	Mohawk River (1)	0	N/A
Totals	1		0	

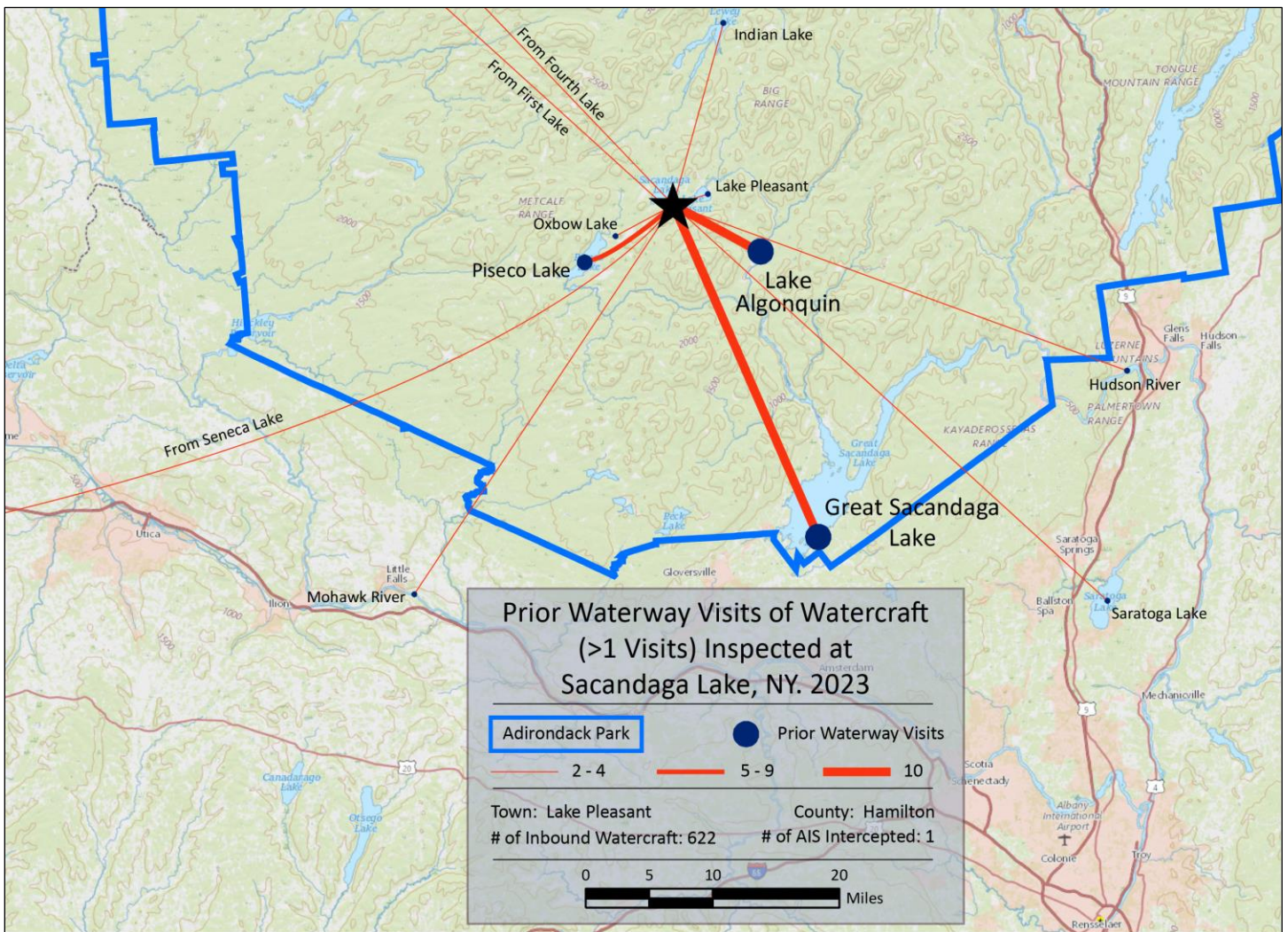
Previous Waterways for Launching Boats	# visits
NONE	414
SAME LAKE - PREVIOUS VISIT	145
Great Sacandaga Lake	10
Lake Algonquin (Hamilton County)	10
Piseco Lake	5
Indian Lake (Hamilton County)	3
Lake Pleasant	3
First Lake	2
Fourth Lake	2
Hudson River	2

Previous Waterways for Launching Boats	# visits
Mohawk River	2
NOT ASKED	2
Oxbow Lake (Hamilton County)	2
REFUSED TO ANSWER	2
Saratoga Lake	2
Seneca Lake	2
Adirondacks (unspecified)	1
Ballston Lake	1
Bond Lake (Niagara County)	1
Canada Lake	1

Previous Waterways for Launching Boats	# visits
Canadarago Lake	1
Cassadaga Lakes (Chautauqua County)	1
Cooper Lake (Ulster County)	1
Delta Lake	1
Lewey Lake (Hamilton County)	1
Long Island Sound	1
Raquette Lake	1
Saratoga River	1
Schroon Lake	1
West Lake (Hamilton County)	1
Total	622

State of Motorized Boat Registration
(n=771)





Sacandaga Lake – Moffitt Beach Launch