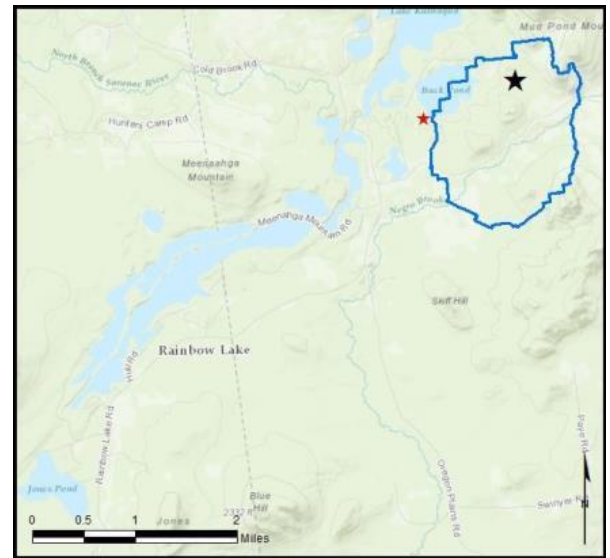


### Rainbow Lake - Buck Pond

**AIS intercepted:** 0  
**Boats inspected:** 879  
**Number of visitors:** 1,413  
**Boats failing inspection:** 0.3%

**Dates of operation:** May 28 – August 24  
**Total number of days covered:** 69  
**Weekly coverage:** 5-7 days  
**Visitors showing spread prevention awareness:** 92%  
**Number of previously visited waterways:** 51

**AIS present in waterbody:** none  
**Stewardship history:** 2005 - present  
**Partnership:** Rainbow Lake Association



Watercraft	Boat Type										total # boats observed	total # boats inspected
	Barge	Canoe	Dock	Kayak	Motor	PWC	Row	Sail	SUP	Wind		
# boats observed	0	235	3	356	272	0	4	2	14	1	887	879
percentage of total boats	0%	26%	0%	40%	31%	0%	0%	0%	2%	0%	100%	99%

Boats observed at launch, including those not inspected. PWC=personal watercraft, SUP=stand-up paddleboard, Wind=windsurfer.

total # visitors	organisms found			total organisms	# boats dirty	# boats w/AIS	# of inspections	% of inspected boats dirty	% of inspected boats w/AIS
	entering	leaving	roadside						
1413	2	1	--	3	3	0	879	0.3%	0%

Boats dirty = watercraft with any organic material, invasive, non-invasive or unknown.

Visitor Responses	AIS spread prevention awareness											# groups asked
	yes	Inspect	Wash	Drain	Bait	LW	Dry	Decon	same lake	first/frozen	didn't ask	
# groups	538	22	58	15	0	2	496	1	7	22	37	582
percentage of total groups asked	92%	4%	10%	3%	0%	0%	85%	0%	1%	4%	NA	

Yes = showed AIS spread prevention awareness; Drain = drained bilge; Bait = emptied bait bucket/disposed of bait; LW = drained livewell; Dry = dried boat; Decon = visited decon station; Same Lake = boat only goes in this lake; First/Frozen = first launch of the season or frozen boat.

Organisms Removed	Organism Type							total # AIS	% of inspected boats w/AIS
	Non-invasive	CLP*	EWM*	VLM*	SWF*	WC*	ZM*		
# organisms	3	0	0	0	0	0	0	0	0%
percentage of total orgs	100%	0%	0%	0%	0%	0%	0%		

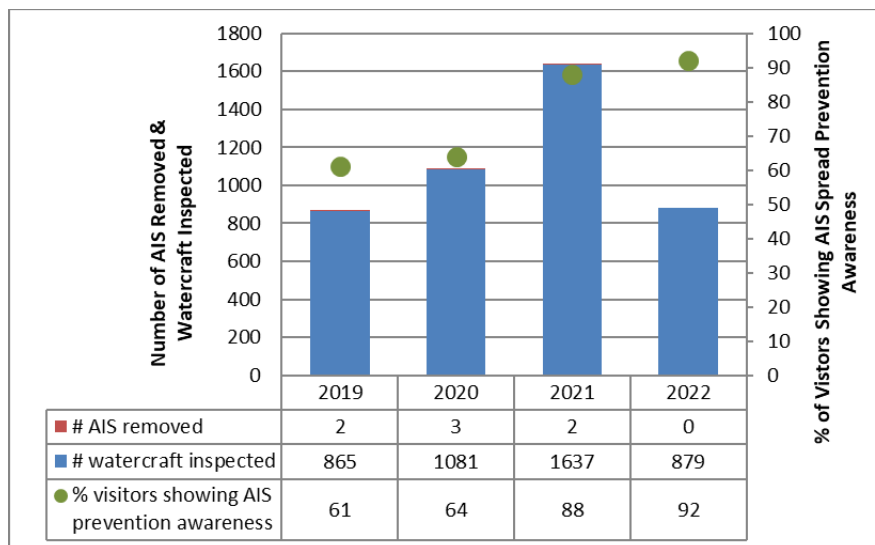
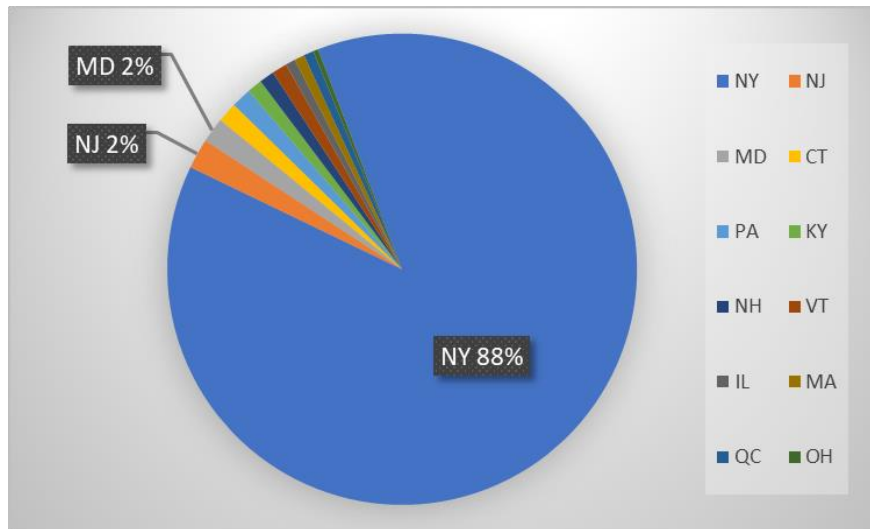
Non-invasive = native aquatic or terrestrial material; CLP = curly-leaf pondweed; EWM = Eurasian watermilfoil; VLM = variable-leaf milfoil; SWF = spiny waterflea; WC= water chestnut; ZM = zebra mussel; \*/AIS = aquatic invasive species.

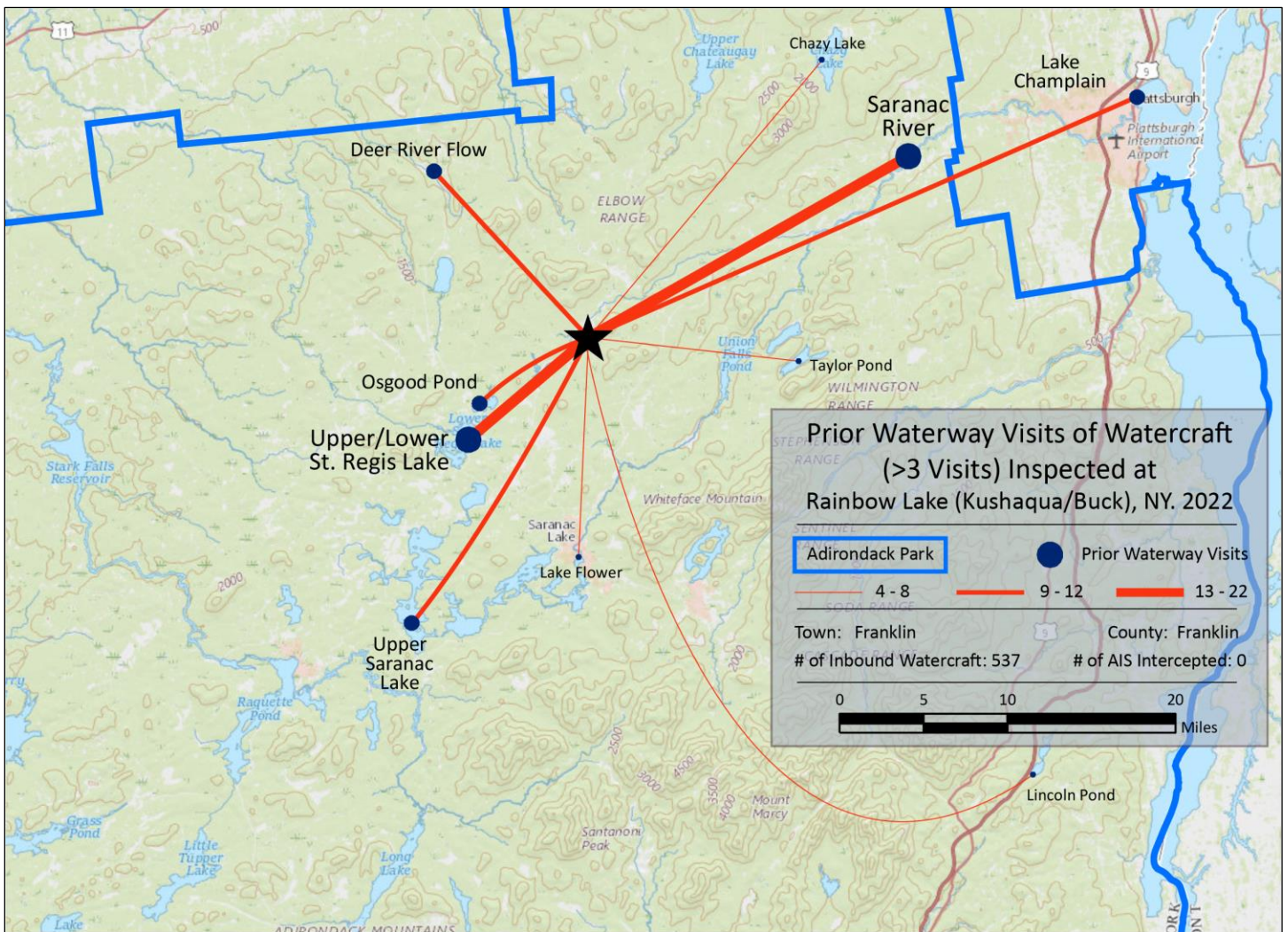
Previous Waterways for Launching Boats	# visits
SAME LAKE - PREVIOUS VISIT	207
NONE	126
Saranac River	22
Lake Champlain	12
Osgood Pond	12
Deer River Flow (Franklin County)	10
Upper Saranac Lake	10
Upper St. Regis Lake	10
Chazy Lake	8
Lake Flower	8
UNKNOWN (boater doesn't know)	8
NOT ASKED	6
Lower St. Regis Lake	5
Lincoln Pond (Essex County)	4
Taylor Pond (Clinton County)	4
Atlantic Ocean	3
Cayuga Lake	3
Chateaugay Lake	3
Chubb River	3
Connecticut River	3

Previous Waterways for Launching Boats	# visits
Delaware River	3
Follensby Clear Pond	3
Follensby Pond (Franklin County)	3
Great Chazy River, NY	3
Jones Pond (Franklin County)	3
Lake Placid	3
Middle Saranac Lake	3
Moose Pond (Hamilton County)	3
Moose Pond Newcomb (Essex County)	3
Second Pond	3
Bog River, NY	2
Catfish Pond, Hardwick Township, NJ	2
Housatonic River	2
Lac Tremblant, Mont-Tremblant, QC	2
Long Pond St. Regis Canoe Area (Franklin)	2
Lower Saranac Lake	2
Meacham Lake	2
Raquette River, NY	2
Spitfire Lake (Franklin County)	2

Previous Waterways for Launching Boats	# visits
St. Lawrence River	2
Tupper Lake	2
Waterbury Reservoir, Waterbury, VT	2
Adirondacks (unspecified)	1
Ausable River	1
Connery Pond (Essex County)	1
Fern Lake (Clinton County)	1
Fish Creek Ponds	1
Grass River Flow (St Lawrence County)	1
Great Sacandaga Lake	1
Lake Luzerne (Warren County)	1
Long Pond (Essex County)	1
Loon Lake (Franklin County)	1
Oseetah Lake	1
Polliwog Pond (Franklin County)	1
Raquette Pond (Franklin County)	1
REFUSED TO ANSWER	1
RENTAL	1
Seventh Lake	1
<b>Total</b>	<b>537</b>

State of Motorized Boat Registration  
(n=291)





Buck Pond Boat Launch