

AWI Partner Program Reports

Schroon Region – Paradox Lake & Severance Decon Station

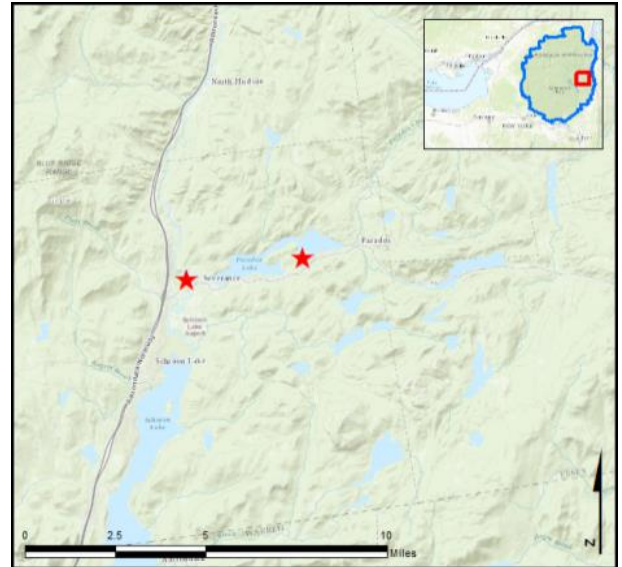
AIS intercepted: 10
Boats inspected: 1,048
Number of visitors: 1,699
Boats failing inspection: 3.2%
Decontaminations performed: 166

Dates of operation: May 26 – October 9
Visitors showing spread prevention awareness: 81%
Number of previous waterways: Paradox 28, Severance 27

AIS present in waterbody: curly-leaf pondweed,
 Eurasian watermilfoil, variable-leaf milfoil

Partnerships: Paradox Lake Association, NYSDEC Paradox Lake
 Campground

Notes: AWI provided support through WISPA data management for
 Severance Decon.



Watercraft	Boat Type										total # boats observed	total # boats inspected
	Barge	Canoe	Dock	Kayak	Motor	PWC	Row	Sail	SUP	Wind		
Paradox Lake	2	115	1	296	410	13	13	0	33	0	883	874
percentage of total boats	0.2%	13%	0.1%	34%	46%	1%	1%	0%	4%	0%	100%	99%
Severance Decon	0	11	0	41	93	25	4	0	0	0	174	174
percentage of total boats	0%	6%	0%	24%	53%	14%	2%	0%	0%	0%	100%	100%
total	2	126	1	337	503	38	17	0	33	0	1057	1048
percentage of total boats	0.2%	12%	0.1%	32%	48%	4%	2%	0%	3%	0%	100%	99%

Boats observed at launch, including those not inspected. PWC=personal watercraft, SUP=stand-up paddleboard, Wind=windsurfer.

	total # visitors	organisms found			total organisms	# boats dirty	# boats w/AIS	# of inspections	% of inspected boats dirty	% of inspected boats w/AIS
		entering	leaving	roadside						
Paradox Lake	1430	5	8	0	13	10	3	874	1.1%	0.3%
Severance Decon	269	0	0	30	30	24	6	174	13.8%	3.4%
total	1699	5	8	30	43	34	9	1048	3.2%	0.9%

Boats dirty = watercraft with any organic material, invasive, non-invasive or unknown.

Visitor Responses	AIS spread prevention awareness											# groups asked
	yes	Inspect	Wash	Drain	Bait	LW	Dry	Decon	same lake	first/frozen	didn't ask	
Paradox Lake	377	108	28	2	1	1	28	38	96	105	225	499
percentage of total groups asked	76%	22%	6%	0.4%	0.2%	0.2%	6%	8%	19%	21%	NA	
Severance Decon	153	29	32	61	1	8	34	151	0	0	0	153
percentage of total groups asked	100%	19%	21%	40%	1%	5%	22%	99%	0%	0%	NA	
total	530	137	60	63	2	9	62	189	96	105	225	652
percentage of total groups asked	81%	21%	9%	10%	0.3%	1%	10%	29%	15%	16%	NA	

Yes = showed AIS spread prevention awareness; Drain = drained bilge; Bait = emptied bait bucket/disposed of bait; LW = drained livewell; Dry = dried boat; Decon = visited decon station; Same Lake = boat only goes in this lake; First/Frozen = first launch of the season or frozen boat.

Organisms Removed	Organism Type									total # AIS	% of inspected boats w/AIS
	Non-invasive	BN*	CLP*	HYD*	EWM*	VLM*	SWF*	WC*	ZM*		
Paradox Lake	10	0	0	0	2	0	0	1	0	3	0.3%
percentage of total orgs	77%	0%	0%	0%	15%	0%	0%	8%	0%		
Severance Decon	23	0	1	0	5	0	0	1	0	7	3.4%
percentage of total orgs	77%	0%	3%	0%	17%	0%	0%	3%	0%		
total	33	0	1	0	7	0	0	2	0	10	0.9%
percentage of total orgs	77%	0%	2%	0%	16%	0%	0%	5%	0%		

Non-invasive = native aquatic or terrestrial material; BN = brittle naiad; CLP = curly-leaf pondweed; HYD = hydrilla; EWM = Eurasian watermilfoil; VLM = variable-leaf milfoil; SWF = spiny/fishhook waterflea; WC= water chestnut; ZM = zebra mussel; */AIS = aquatic invasive species.

Paradox Lake

Aquatic Invasive Species Intercepted by Stewards	# found on boats launching	Previous Waterway	# found on boats retrieving	Previous Waterway
Eurasian watermilfoil	1	Lake Hopatcong NJ (1)	1	Paradox Lake (1)
water chestnut	1	Lake George (1)	0	N/A
Totals	2		1	

Severance Decon

Aquatic Invasive Species Intercepted by Stewards	# found at roadside	Previous Waterway
curly-leaf pondweed	1	Saratoga Lake (1)
Eurasian watermilfoil	5	Round Lake (2), Lake Champlain (1), Saratoga Lake (1), Schroon Lake (1)
water chestnut	1	Mohawk River (1)
Totals	7	

Paradox Lake

Previous Waterways for Launching Boats	# visits
NONE	250
SAME LAKE - PREVIOUS VISIT	171
Schroon Lake	38
UNKNOWN (boater doesn't know)	16
Lake Champlain	12
Putnam Pond (Essex County)	12
NOT ASKED	10
Lake George	9
Brant Lake	8
Hudson River	8
Eagle Lake (Essex County)	6

Previous Waterways for Launching Boats	# visits
Schroon River, NY	6
Lower Saranac Lake	5
Barnum Pond (Franklin County)	4
Cascade Lake (Essex County)	2
Dyken Pond (Rensselaer County)	2
Fall Stream (Hamilton County)	2
Garnet Lake (Warren County)	2
Great Sacandaga Lake	2
Keuka Lake	2
Saratoga Lake	2
Somerset Reservoir, Stratton, VT	2

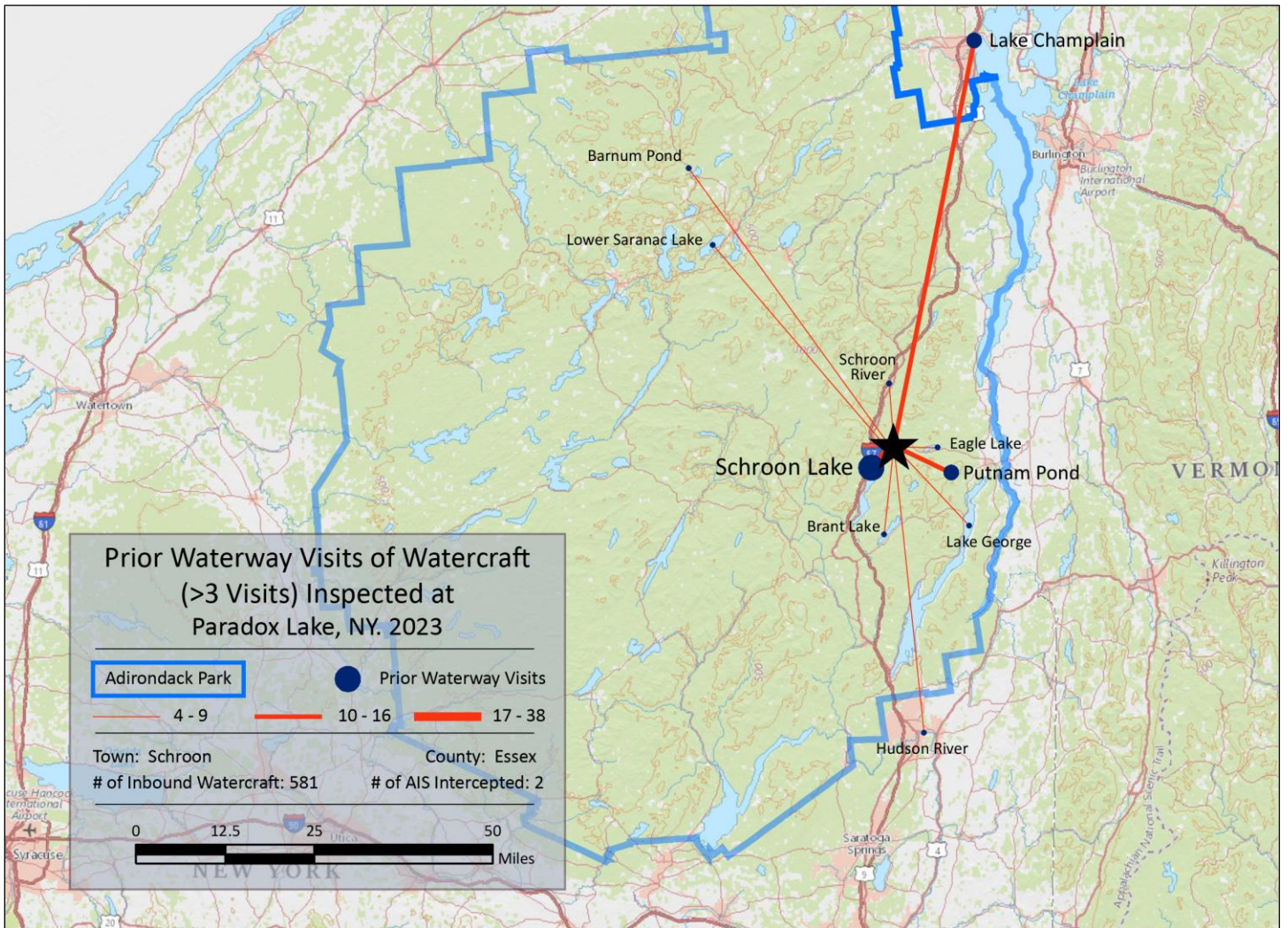
Previous Waterways for Launching Boats	# visits
Ballston Lake	1
Cossayuna Lake (Washington County)	1
Cranberry Lake	1
Glass Lake (Rensselaer County)	1
Hoover Reservoir, Franklin County, OH	1
Lake Hopatcong, Jefferson, NJ	1
Minerva Lake (Essex County)	1
Mohawk River	1
Soft Maple Reservoir (Lewis County)	1
Tripp Pond (Warren County)	1
Total	581

Severance Decon

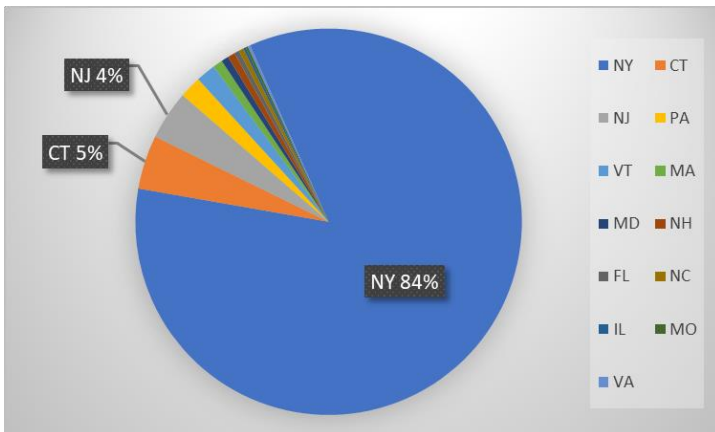
Previous Waterways for Launching Boats	# visits
NONE	35
Paradox Lake	31
Schroon Lake	20
Lake Champlain	18
Lake George	12
NOT ASKED	8
UNKNOWN (boater doesn't know)	7
Hudson River	5
Brant Lake	4
Eagle Lake (Essex County)	3
Adirondacks (unspecified)	2

Previous Waterways for Launching Boats	# visits
Caroga Lake	2
Crane Pond (Essex County)	2
Great Sacandaga Lake	2
Lake Ontario	2
Mohawk River	2
Putnam Pond (Essex County)	2
Round Lake (Saratoga County)	2
Schroon River, NY	2
Taylor Pond (Clinton County)	2
Belleau Lake, Wakefield, NH	1

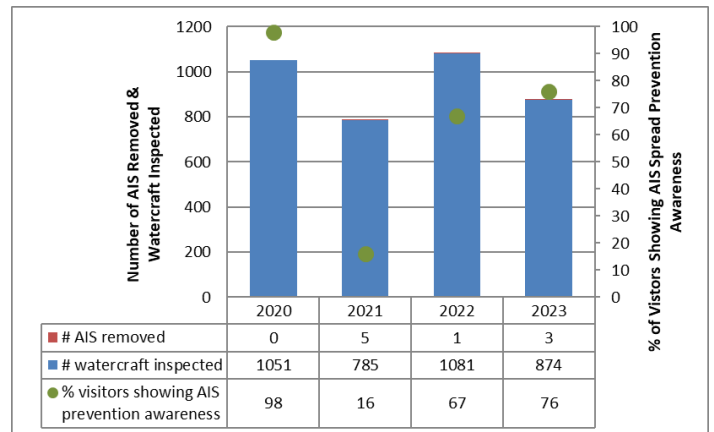
Previous Waterways for Launching Boats	# visits
Boreas Ponds (Essex County)	1
Candlewood Lake, Brookfield, CT	1
Chazy Lake	1
Conesus Lake	1
Cossayuna Lake (Washington County)	1
Loon Lake (Warren County)	1
Saratoga River	1
Snyder's Lake (Rensselaer County)	1
Stewarts Bridge Reservoir	1
Upper Greenwood Lake, West Milford, NJ	1
Total	174

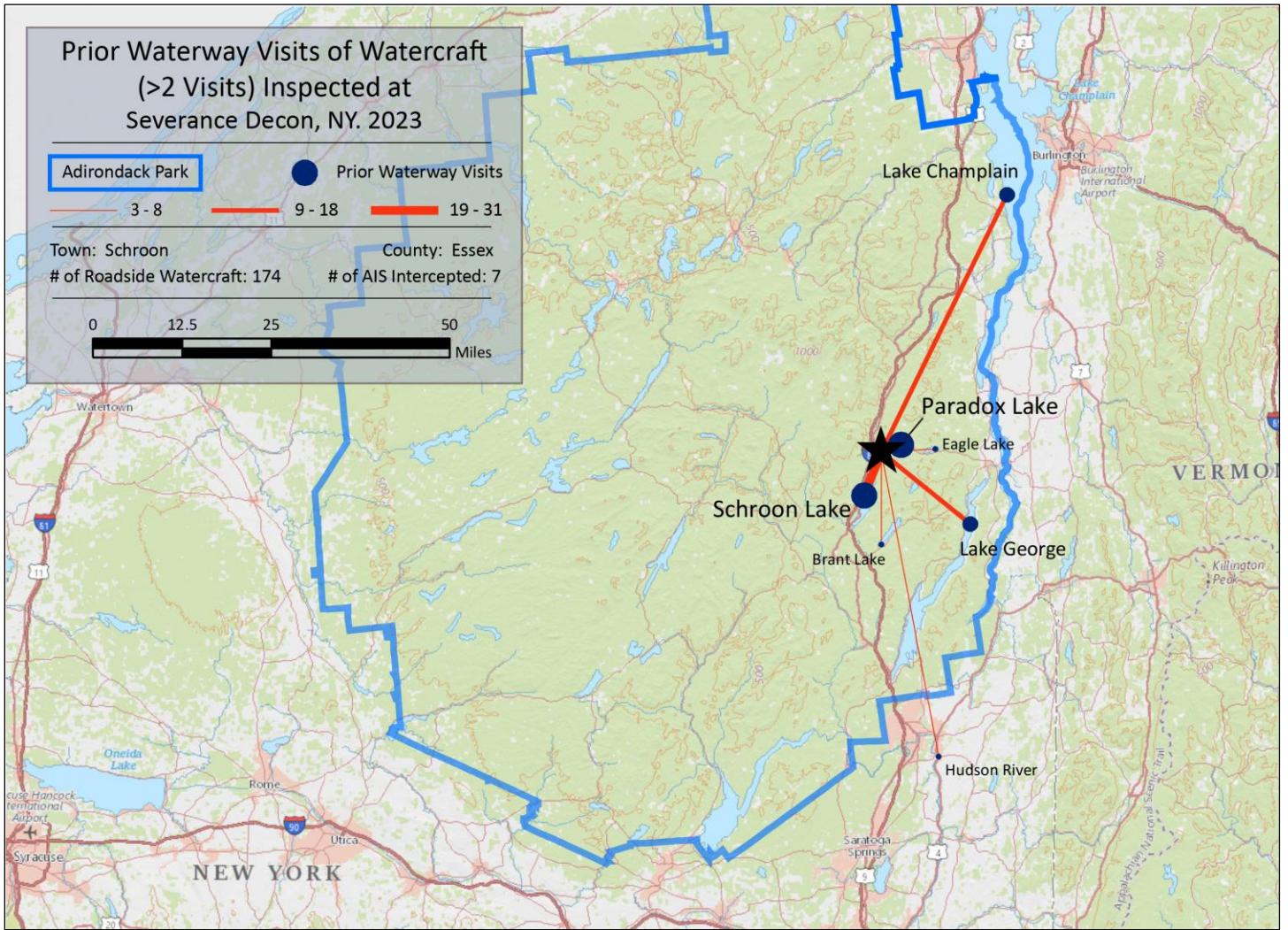


State of Motorized Boat Registration (n=488)

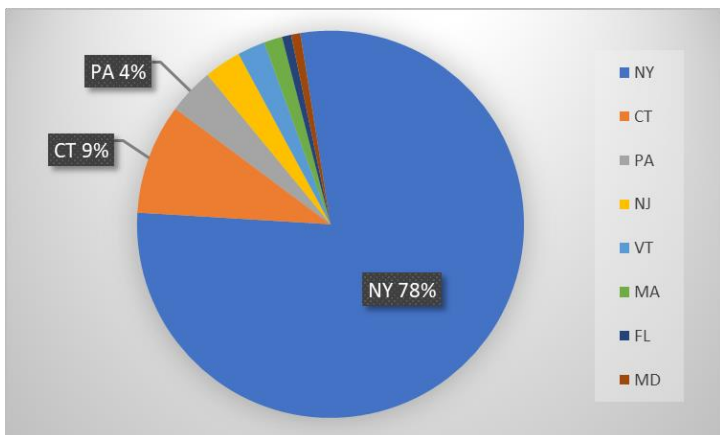


Paradox Lake





State of Motorized Boat Registration (n=130)



Severance Decon

