

AWI Partner Program Reports

Schroon Region – Paradox Lake & Severance Decon Station

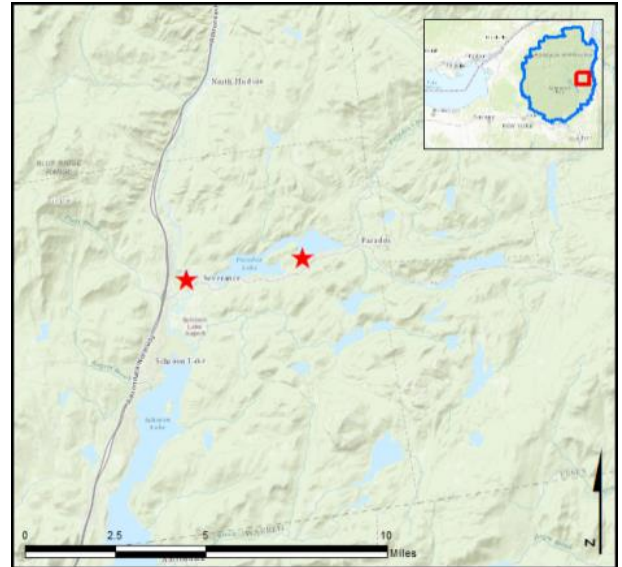
AIS intercepted: 3
Boats inspected: 1,223
Number of visitors: 1,881
Boats failing inspection: 2.9%
Decontaminations performed: 129

Dates of operation: May 28 – October 10
Visitors showing spread prevention awareness: 75%
Number of previous waterways: Paradox 47, Severance 23

AIS present in waterbody: curly-leaf pondweed,
 Eurasian watermilfoil, variable-leaf milfoil

Partnerships: Paradox Lake Association, NYSDEC Paradox Lake
 Campground

Notes: AWI provided support through WISPA data management for
 Severance Decon.



Watercraft	Boat Type										total # boats observed	total # boats inspected
	Barge	Canoe	Dock	Kayak	Motor	PWC	Row	Sail	SUP	Wind		
Paradox Lake	2	99	1	462	440	29	13	3	43	0	1092	1081
percentage of total boats	0%	9%	0%	42%	40%	3%	1%	0%	4%	0%	100%	99%
Severance Decon	0	3	1	39	87	10	1	0	1	0	142	142
percentage of total boats	0%	2%	1%	27%	61%	7%	1%	0%	1%	0%	100%	100%
total	2	102	2	501	527	39	14	3	44	0	1234	1223
percentage of total boats	0%	8%	0%	41%	43%	3%	1%	0%	4%	0%	100%	99%

Boats observed at launch, including those not inspected. PWC=personal watercraft, SUP=stand-up paddleboard, Wind=windsurfer.

	total # visitors	organisms found			total organisms	# boats dirty	# boats w/AIS	# of inspections	% of inspected boats dirty	% of inspected boats w/AIS
		entering	leaving	roadside						
Paradox Lake	1649	7	26	--	33	28	1	1081	2.6%	0.1%
Severance Decon	232	--	--	7	7	7	2	142	4.9%	1.4%
total	1881	7	26	7	40	35	3	1223	2.9%	0.2%

Boats dirty = watercraft with any organic material, invasive, non-invasive or unknown.

Visitor Responses	AIS spread prevention awareness											# groups asked
	yes	Inspect	Wash	Drain	Bait	LW	Dry	Decon	same lake	first/frozen	didn't ask	
Paradox Lake	258	29	63	3	0	3	49	27	68	92	428	387
percentage of total groups asked	67%	7%	16%	1%	0%	1%	13%	7%	18%	24%	NA	
Severance Decon	124	66	17	44	1	13	39	124	0	0	0	124
percentage of total groups asked	100%	53%	14%	35%	1%	10%	31%	100%	0%	0%	NA	
total	382	95	80	47	1	16	88	151	68	92	428	511
percentage of total groups asked	75%	19%	16%	9%	0%	3%	17%	30%	13%	18%	NA	

Yes = showed AIS spread prevention awareness; Drain = drained bilge; Bait = emptied bait bucket/disposed of bait; LW = drained livewell; Dry = dried boat; Decon = visited decon station; Same Lake = boat only goes in this lake; First/Frozen = first launch of the season or frozen boat.

Organisms Removed	Organism Type							total # AIS	% of inspected boats w/AIS
	Non-invasive	CLP*	EWM*	VLM*	SWF*	WC*	ZM*		
Paradox Lake	32	0	1	0	0	0	0	1	0.1%
percentage of total orgs	97%	0%	3%	0%	0%	0%	0%		
Severance Decon	5	2	0	0	0	0	0	2	1.4%
percentage of total orgs	71%	29%	0%	0%	0%	0%	0%		
total	37	2	1	0	0	0	0	3	0.2%
percentage of total orgs	93%	5%	3%	0%	0%	0%	0%		

Non-invasive = native aquatic or terrestrial material; CLP = curly-leaf pondweed; EWM = Eurasian watermilfoil; VLM = variable-leaf milfoil; SWF = spiny waterflea; WC= water chestnut; ZM = zebra mussel; */AIS = aquatic invasive species.

Paradox Lake

Aquatic Invasive Species Intercepted by Stewards	# found on boats launching	Previous Waterway	# found on boats retrieving	Previous Waterway
Eurasian watermilfoil	0	N/A	1	Paradox Lake (1)
Totals	0		1	

Severance Decon

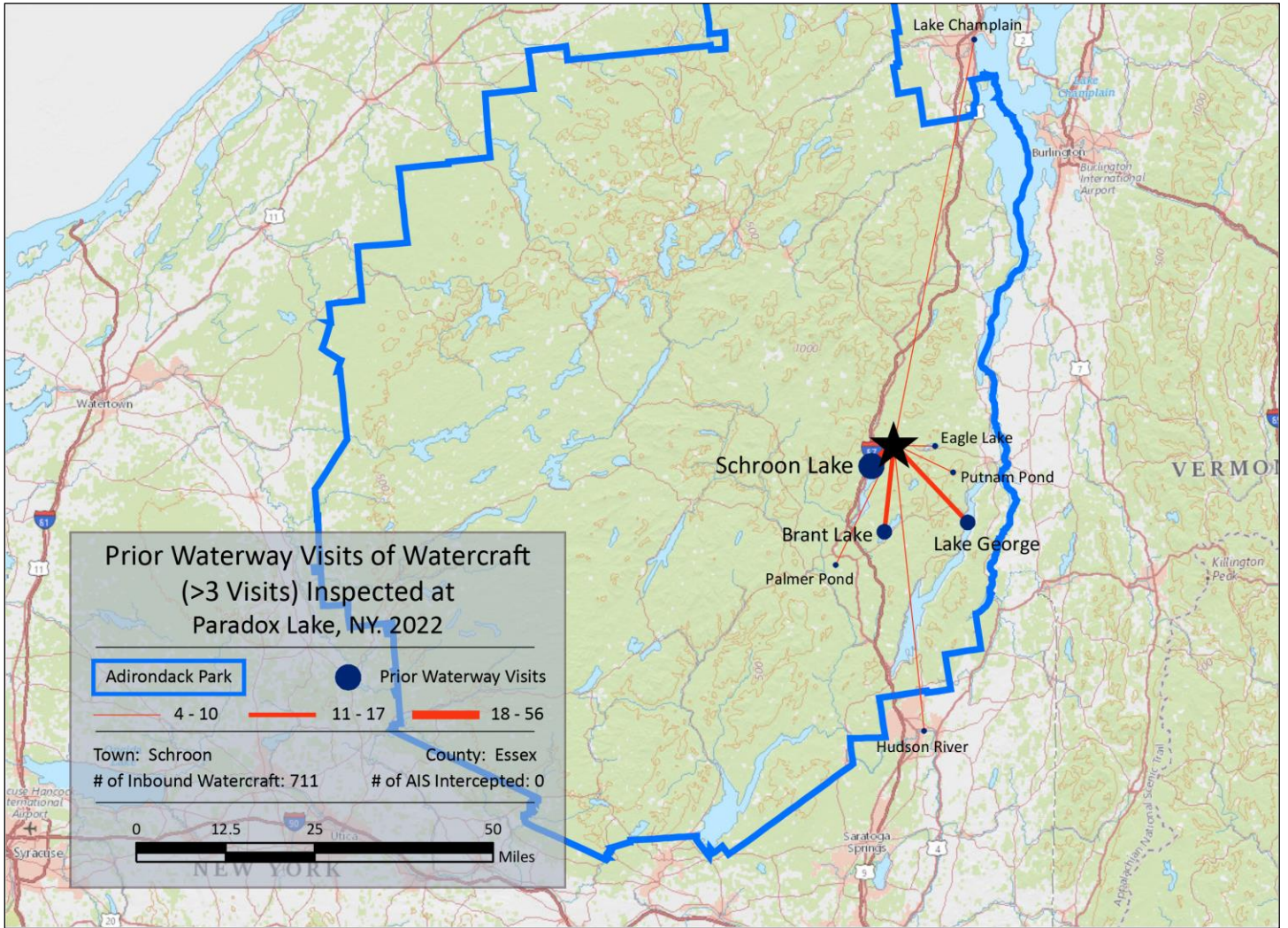
Aquatic Invasive Species Intercepted by Stewards	# found at roadside	Previous Waterway
curly-leaf pondweed	2	Schroon Lake (1), Lake Champlain (1)
Totals	2	

Paradox Lake

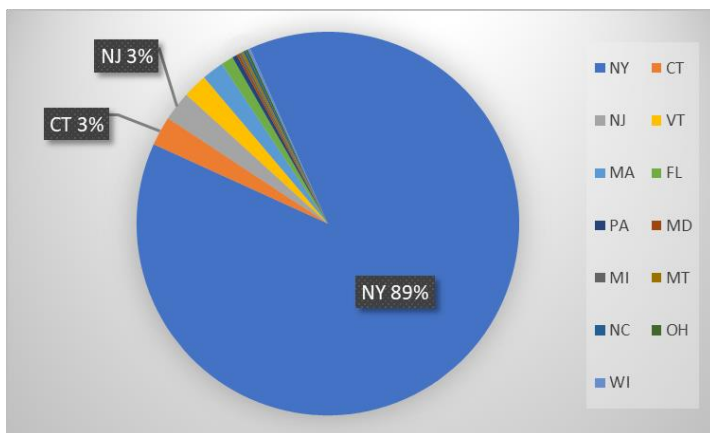
Previous Waterways for Launching Boats	# visits	Previous Waterways for Launching Boats	# visits	Previous Waterways for Launching Boats	# visits
NONE	371	Indian Lake (Hamilton County)	2	Finger Lakes (unspecified)	1
SAME LAKE - PREVIOUS VISIT	127	Lake Abanakee (Hamilton County)	2	Grafton Lakes State Park (Rensselaer Cty)	1
Schroon Lake	56	Lake Colby	2	Great Sacandaga Lake	1
Lake George	16	Lincoln Pond (Essex County)	2	Harris Lake (Essex County)	1
Brant Lake	14	Middle Saranac Lake	2	Jabe Pond (Warren County)	1
UNKNOWN (boater doesn't know)	12	Minerva Lake (Essex County)	2	Kayaderoseras Creek (Saratoga County)	1
NOT ASKED	11	Moose Pond Campground (Essex County)	2	Lake Adirondack (Hamilton County)	1
Putnam Pond (Essex County)	10	Moreau Lake (Saratoga County)	2	Lake Hopatcong, Jefferson, NJ	1
Hudson River	7	Rollins Pond	2	Lake Luzerne (Warren County)	1
Lake Champlain	7	Saranac Chain of Lakes (unspecified)	2	Lake Windsor, Wantage, NJ	1
Palmer Pond (Warren County)	6	Saratoga Lake	2	Long Lake	1
Eagle Lake (Essex County)	5	Stewarts Bridge Reservoir	2	Lower Saranac Lake	1
Forked Lake	3	Unspecified Private Owned	2	Mud Pond (Franklin County)	1
Pepacton Reservoir (Delaware County)	3	Adirondacks (unspecified)	1	Nelson Pond, East Montpelier, VT	1
Round Lake (Saratoga County)	3	Ballston Lake	1	Oxbow Lake (Hamilton County)	1
Schroon River, NY	3	Blue Mountain Lake	1	Polliwog Pond (Franklin County)	1
Upper St. Regis Lake	3	Canandaigua Lake	1	Pyramid Lake (Essex County)	1
Glen Lake (Warren County)	2	Connecticut River	1	RENTAL	1
Hemlock Lake (Livingston/Ontario Counties)	2	Cranberry Lake	1	Total	711

Severance Decon

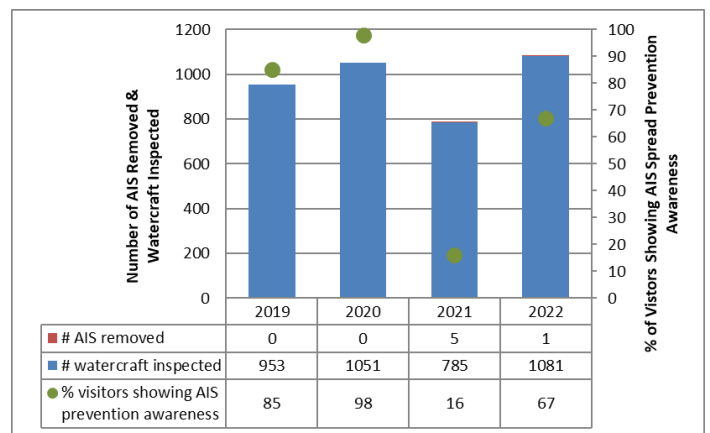
Previous Waterways for Launching Boats	# visits	Previous Waterways for Launching Boats	# visits	Previous Waterways for Launching Boats	# visits
NONE	42	Putnam Pond (Essex County)	3	Lincoln Pond (Essex County)	1
Paradox Lake	24	Stillwater Reservoir	3	Mohawk River	1
Schroon Lake	21	Little Tupper Lake	2	Mollys Falls Pond, Marshfield, VT	1
Lake Champlain	13	Brant Lake	1	Raquette Lake	1
Lake George	6	Clinton Reservoir, West Milford, NJ	1	St. Lawrence River	1
Schroon River, NY	6	Connecticut River	1	Tully Lake (Cortland/Onondaga Counties)	1
Eagle Lake (Essex County)	5	Indian Lake, Worcester, MA	1	Tupper Lake	1
Hudson River	4	Lake Bonaparte	1	Upper Saranac Lake	1
				Total	142

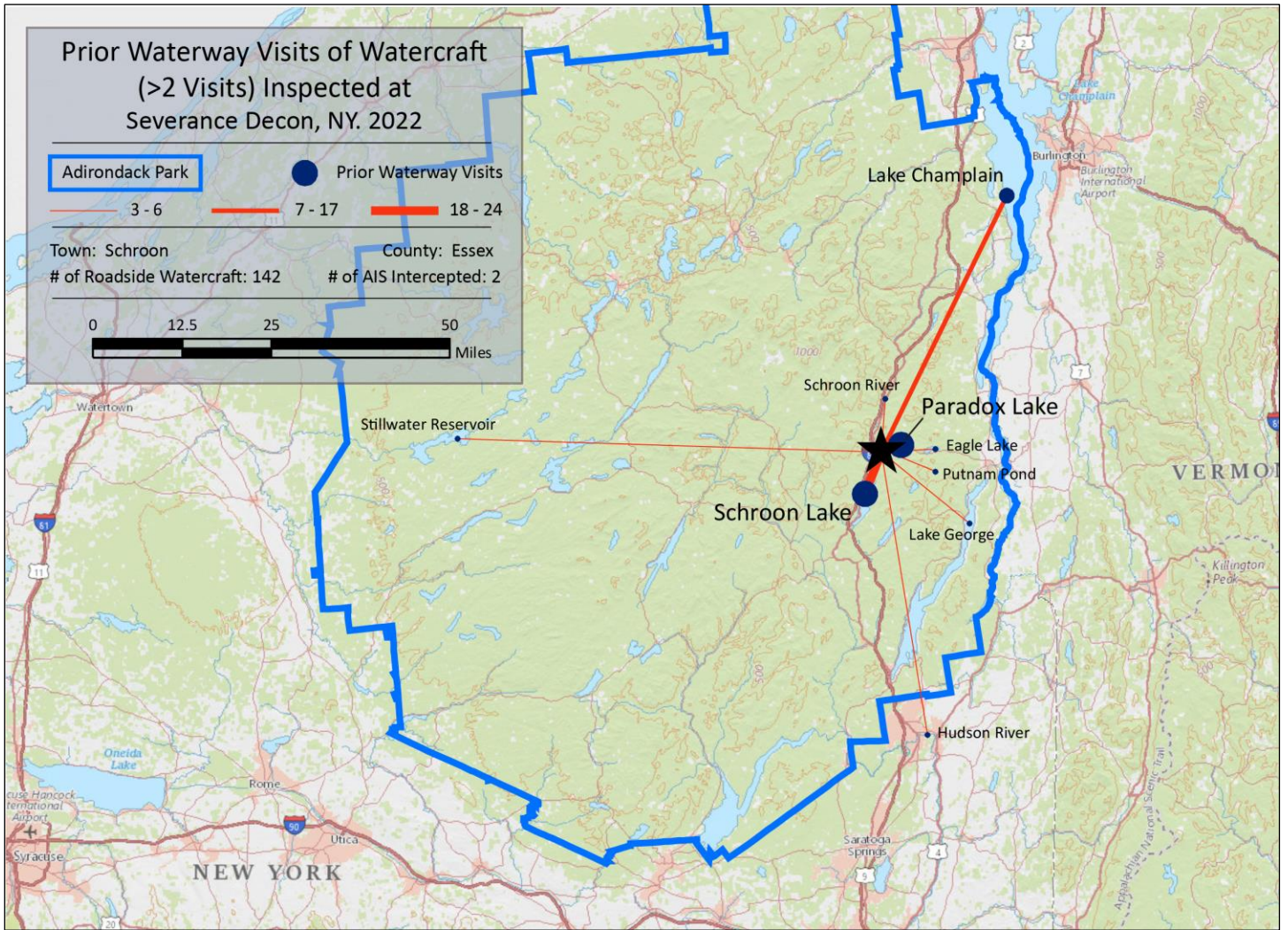


State of Motorized Boat Registration (n=485)

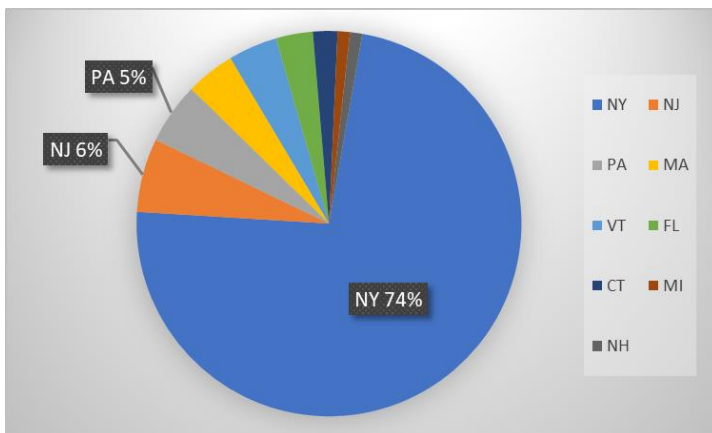


Paradox Lake





State of Motorized Boat Registration (n=97)



Severance Decon

