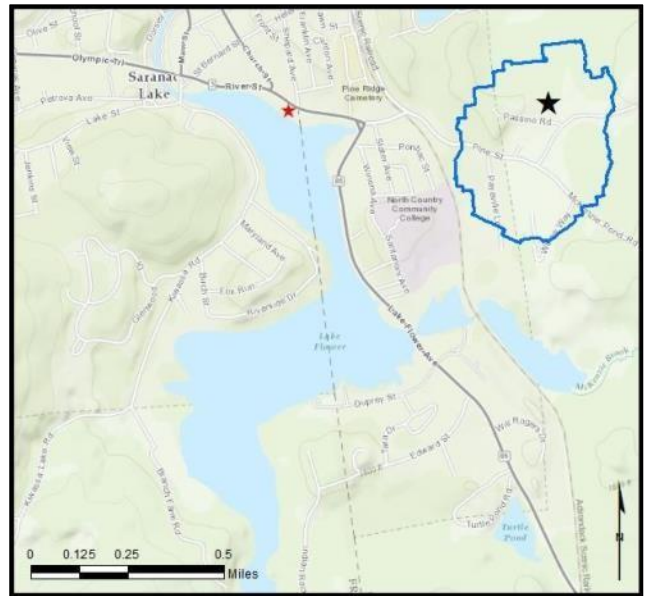


## Lake Flower

**AIS intercepted:** 32  
**Boats inspected:** 1,159  
**Number of visitors:** 2,151  
**Boats failing inspection:** 7.2%

**Dates of operation:** May 28 – October 9  
**Total number of days covered:** 92  
**Weekly coverage:** 5-7 days  
**Visitors showing spread prevention awareness:** 82%  
**Number of previously visited waterways:** 59

**AIS present in waterbody:** curly-leaf pondweed, Eurasian watermilfoil, variable-leaf milfoil  
**Stewardship history:** 2011 - present



Watercraft	Boat Type										total # boats observed	total # boats inspected
	Barge	Canoe	Dock	Kayak	Motor	PWC	Row	Sail	SUP	Wind		
# boats observed	1	148	0	204	749	45	16	0	28	0	1191	1159
percentage of total boats	0%	12%	0%	17%	63%	4%	1%	0%	2%	0%	100%	97%

Boats observed at launch, including those not inspected. PWC=personal watercraft, SUP=stand-up paddleboard, Wind=windsurfer.

total # visitors	organisms found			total organisms	# boats dirty	# boats w/AIS	# of inspections	% of inspected boats dirty	% of inspected boats w/AIS
	entering	leaving	roadside						
2151	5	115	--	120	84	32	1159	7.2%	2.8%

Boats dirty = watercraft with any organic material, invasive, non-invasive or unknown.

Visitor Responses	AIS spread prevention awareness											# groups asked
	yes	Inspect	Wash	Drain	Bait	LW	Dry	Decon	same lake	first/frozen	didn't ask	
# groups	785	142	466	32	0	10	292	17	80	79	36	953
percentage of total groups asked	82%	15%	49%	3%	0%	1%	31%	2%	8%	8%	NA	

Yes = showed AIS spread prevention awareness; Drain = drained bilge; Bait = emptied bait bucket/disposed of bait; LW = drained livewell; Dry = dried boat; Decon = visited decon station; Same Lake = boat only goes in this lake; First/Frozen = first launch of the season or frozen boat.

Organisms Removed	Organism Type							total # AIS	% of inspected boats w/AIS
	Non-invasive	CLP*	EWM*	VLM*	SWF*	WC*	ZM*		
# organisms	88	0	0	32	0	0	0	32	2.8%
percentage of total orgs	73%	0%	0%	27%	0%	0%	0%		

Non-invasive = native aquatic or terrestrial material; CLP = curly-leaf pondweed; EWM = Eurasian watermilfoil; VLM = variable-leaf milfoil; SWF = spiny waterflea; WC = water chestnut; ZM = zebra mussel; \*/AIS = aquatic invasive species.

Aquatic Invasive Species Intercepted by Stewards	# found on boats launching	Previous Waterway	# found on boats retrieving	Previous Waterway
variable-leaf milfoil	0	N/A	32	Lake Flower (32)
<b>Totals</b>	<b>0</b>		<b>32</b>	

Previous Waterways for Launching Boats	# visits
NONE	272
SAME LAKE - PREVIOUS VISIT	216
Upper Saranac Lake	51
Lake Placid	19
Lower Saranac Lake	17
NOT ASKED	11
RENTAL	9
Second Pond	8
Buck Pond (Rainbow Lake/Lake Kushaqua)	6
Follensby Clear Pond	6
Raquette River, NY	6
UNKNOWN (boater doesn't know)	6
Tupper Lake	5
Atlantic Ocean	4
Grass River Flow (St Lawrence County)	4
Lake Champlain	4
Chateaugay Lake	3
Deer River Flow (Franklin County)	3
Hudson River	3
Long Lake	3
Middle Saranac Lake	3
Saratoga Lake	3

Previous Waterways for Launching Boats	# visits
Beltzville Lake, Beltzville State Park, PA	2
Canandaigua Lake	2
Cayuga Lake	2
Cranberry Lake	2
Delaware River	2
Floodwood Pond	2
Fourth Lake	2
Kiwassa Lake	2
Lake Dunmore, Salisbury, VT	2
Lake George	2
Lows Lake	2
Moose Pond (Hamilton County)	2
Rollins Pond	2
Sandy Creek, NY	2
Taylor Pond (Clinton County)	2
Ashmere Lake, Hinsdale, MA	1
Brant Lake	1
Canadice Lake	1
Erie Canal	1
Fish Creek Ponds	1
Great Sacandaga Lake	1

Previous Waterways for Launching Boats	# visits
Indian Lake (Franklin County)	1
Lake Colby	1
Lake Durant (Hamilton County)	1
Lincoln Pond (Essex County)	1
Little Clear Pond	1
Little Green Pond (Franklin County)	1
Loon Lake (Franklin County)	1
Lower St. Regis Lake	1
Mirror Lake	1
Mohawk River	1
Moose Pond Campground (Essex County)	1
Niagara River, NY	1
Osgood Pond	1
Raquette Lake	1
Raquette Pond (Franklin County)	1
Schroon Lake	1
Seventh Lake	1
Skaneateles Lake	1
St. Lawrence River	1
Stillwater Reservoir	1
Upper St. Regis Lake	1
<b>Total</b>	<b>719</b>

State of Motorized Boat Registration  
(n=784)

