

## Chazy Lake

**AIS intercepted:** 1  
**Boats inspected:** 705  
**Number of visitors:** 1,417  
**Boats failing inspection:** 0.4%  
**Decontaminations performed:** 183

**Dates of operation:** May 26 – October 9  
**Total number of days covered:** 101  
**Weekly coverage:** 5 days  
**Visitors showing spread prevention awareness:** 97%  
**Number of previously visited waterways:** 13

**AIS present in waterbody:** Eurasian watermilfoil  
**Stewardship history:** 2014 - present  
**Partnership:** Chazy Lake Association



| Watercraft                | Boat Type |       |      |       |       |     |     |      |      |      | total # boats observed | total # boats inspected |
|---------------------------|-----------|-------|------|-------|-------|-----|-----|------|------|------|------------------------|-------------------------|
|                           | Barge     | Canoe | Dock | Kayak | Motor | PWC | Row | Sail | SUP  | Wind |                        |                         |
| # boats observed          | 0         | 9     | 4    | 72    | 527   | 79  | 6   | 6    | 3    | 0    | 706                    | 705                     |
| percentage of total boats | 0%        | 1%    | 1%   | 10%   | 75%   | 11% | 1%  | 1%   | 0.4% | 0%   | 100%                   | 99.9%                   |

Boats observed at launch, including those not inspected. PWC=personal watercraft, SUP=stand-up paddleboard, Wind=windsurfer.

| total # visitors | organisms found |         |          | total organisms | # boats dirty | # boats w/AIS | # of inspections | % of inspected boats dirty | % of inspected boats w/AIS |
|------------------|-----------------|---------|----------|-----------------|---------------|---------------|------------------|----------------------------|----------------------------|
|                  | entering        | leaving | roadside |                 |               |               |                  |                            |                            |
| 1417             | 1               | 2       | 0        | 3               | 3             | 1             | 705              | 0.4%                       | 0.1%                       |

Boats dirty = watercraft with any organic material, invasive, non-invasive or unknown.

| Visitor Responses                | AIS spread prevention awareness |         |      |       |      |      |     |       |           |              |            | # groups asked |
|----------------------------------|---------------------------------|---------|------|-------|------|------|-----|-------|-----------|--------------|------------|----------------|
|                                  | yes                             | Inspect | Wash | Drain | Bait | LW   | Dry | Decon | same lake | first/frozen | didn't ask |                |
| # groups                         | 664                             | 6       | 59   | 9     | 3    | 3    | 13  | 185   | 266       | 178          | 6          | 687            |
| percentage of total groups asked | 97%                             | 1%      | 9%   | 1%    | 0.4% | 0.4% | 2%  | 27%   | 39%       | 26%          | NA         |                |

Yes = showed AIS spread prevention awareness; Drain = drained bilge; Bait = emptied bait bucket/disposed of bait; LW = drained livewell; Dry = dried boat; Decon = visited decon station; Same Lake = boat only goes in this lake; First/Frozen = first launch of the season or frozen boat.

| Organisms Removed        | Organism Type |     |      |      |      |      |      |     |     | total # AIS | % of inspected boats w/AIS |
|--------------------------|---------------|-----|------|------|------|------|------|-----|-----|-------------|----------------------------|
|                          | Non-invasive  | BN* | CLP* | HYD* | EWM* | VLM* | SWF* | WC* | ZM* |             |                            |
| # organisms              | 2             | 0   | 0    | 0    | 1    | 0    | 0    | 0   | 0   | 1           | 0.1%                       |
| percentage of total orgs | 67%           | 0%  | 0%   | 0%   | 33%  | 0%   | 0%   | 0%  | 0%  |             |                            |

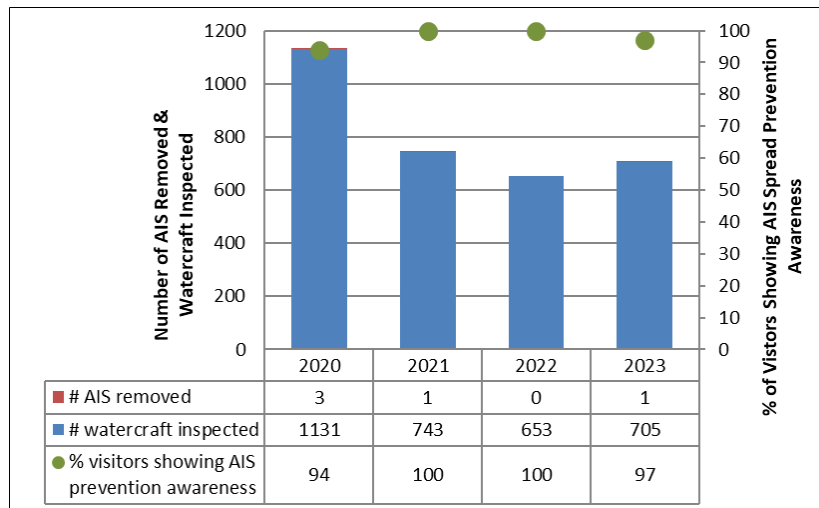
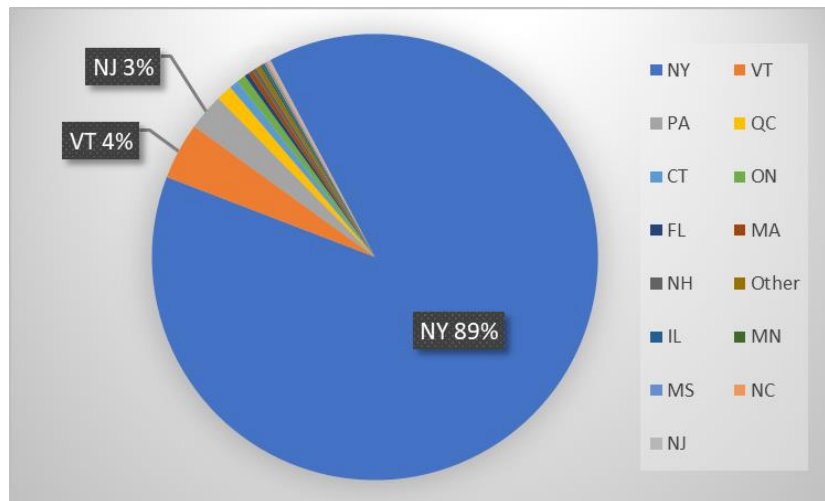
Non-invasive = native aquatic or terrestrial material; BN = brittle naiad; CLP = curly-leaf pondweed; HYD = hydrilla; EWM = Eurasian watermilfoil; VLM = variable-leaf milfoil; SWF = spiny/fishhook waterflea; WC= water chestnut; ZM = zebra mussel; \*/AIS = aquatic invasive species.

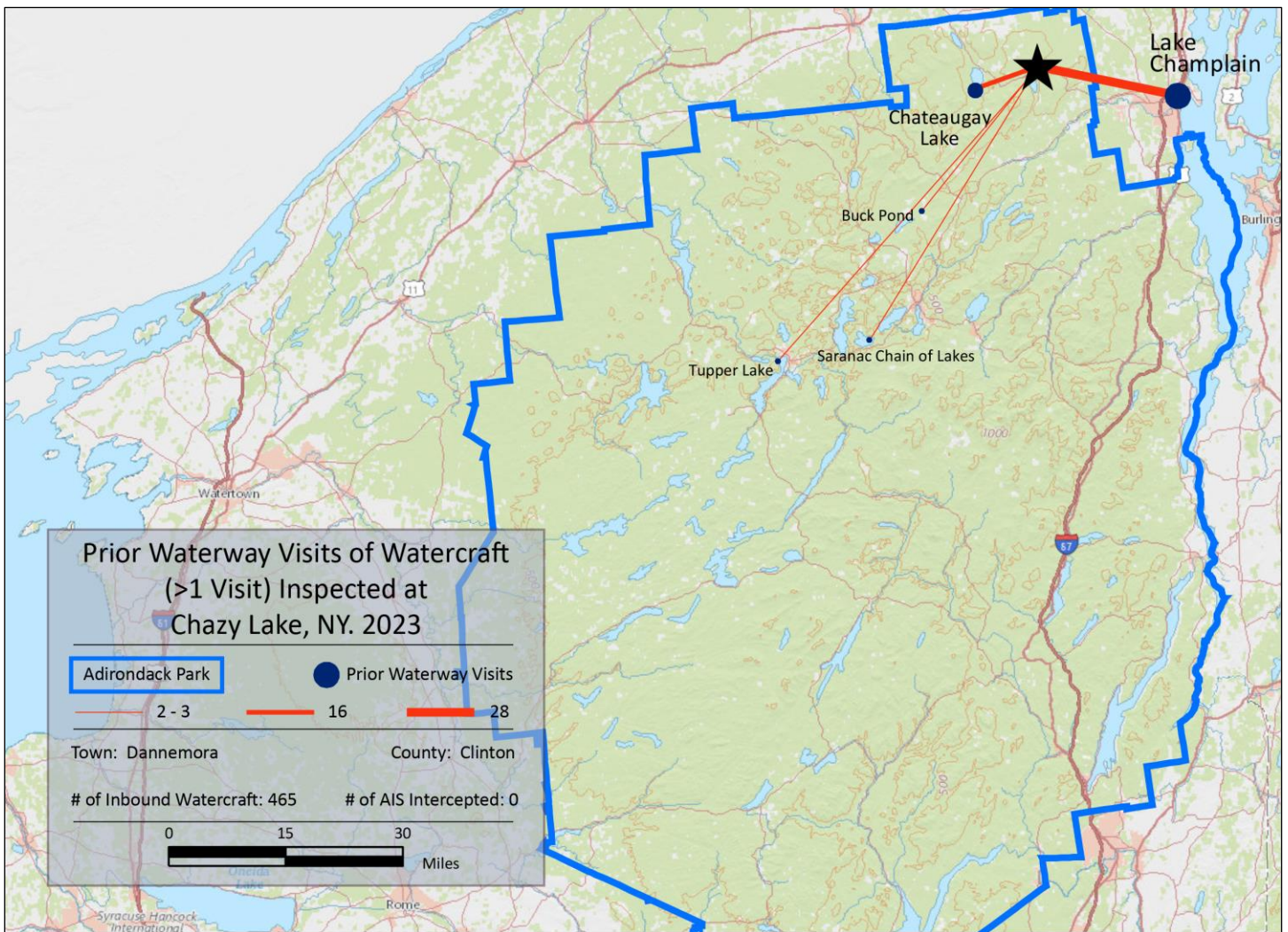
| Aquatic Invasive Species Intercepted by Stewards | # found on boats launching | Previous Waterway | # found on boats retrieving | Previous Waterway |
|--|----------------------------|-------------------|-----------------------------|-------------------|
| Eurasian watermilfoil                            | 0                          | N/A               | 1                           | Chazy Lake (1)    |
| <b>Totals</b>                                    | <b>0</b>                   |                   | <b>1</b>                    |                   |

| Previous Waterways for Launching Boats | # visits |
|--|----------|
| NONE                                   | 230      |
| SAME LAKE - PREVIOUS VISIT             | 172      |
| Lake Champlain                         | 28       |
| Chateaugay Lake                        | 16       |
| Saranac Chain of Lakes (unspecified)   | 3        |
| Buck Pond (Rainbow Lake/Lake Kushaqua) | 2        |
| NOT ASKED                              | 2        |
| Tupper Lake                            | 2        |
| Blue Mountain Lake                     | 1        |

| Previous Waterways for Launching Boats | # visits   |
|--|------------|
| Buck Pond (Monroe County)              | 1          |
| Canal de Lachine, Montreal, QC         | 1          |
| Forked Lake                            | 1          |
| Lake Flower                            | 1          |
| Lincoln Pond (Essex County)            | 1          |
| Middle Saranac Lake                    | 1          |
| REFUSED TO ANSWER                      | 1          |
| Saratoga Lake                          | 1          |
| Upper Saranac Lake                     | 1          |
| <b>Total</b>                           | <b>465</b> |

**State of Motorized Boat Registration  
(n=606)**





Chazy Lake Boat Launch