

Chazy Lake

AIS intercepted: 0
Boats inspected: 653
Number of visitors: 1,399
Boats failing inspection: 0%
Decontaminations performed: 50

Dates of operation: May 28 – September 9
Total number of days covered: 75
Weekly coverage: 5 days
Visitors showing spread prevention awareness: 100%
Number of previously visited waterways: 18

AIS present in waterbody: Eurasian watermilfoil
Stewardship history: 2014 - present
Partnership: Chazy Lake Association



| Watercraft | Boat Type | | | | | | | | | | total # boats observed | total # boats inspected |
|---------------------------|-----------|-------|------|-------|-------|-----|-----|------|-----|------|------------------------|-------------------------|
| | Barge | Canoe | Dock | Kayak | Motor | PWC | Row | Sail | SUP | Wind | | |
| # boats observed | 3 | 7 | 0 | 84 | 464 | 83 | 4 | 6 | 2 | 0 | 653 | 653 |
| percentage of total boats | 0% | 1% | 0% | 13% | 71% | 13% | 1% | 1% | 0% | 0% | 100% | 100% |

Boats observed at launch, including those not inspected. PWC=personal watercraft, SUP=stand-up paddleboard, Wind=windsurfer.

| total # visitors | organisms found | | | total organisms | # boats dirty | # boats w/AIS | # of inspections | % of inspected boats dirty | % of inspected boats w/AIS |
|------------------|-----------------|---------|----------|-----------------|---------------|---------------|------------------|----------------------------|----------------------------|
| | entering | leaving | roadside | | | | | | |
| 1399 | 0 | 0 | -- | 0 | 0 | 0 | 653 | 0% | 0% |

Boats dirty = watercraft with any organic material, invasive, non-invasive or unknown.

| Visitor Responses | AIS spread prevention awareness | | | | | | | | | | | # groups asked |
|----------------------------------|---------------------------------|---------|------|-------|------|----|-----|-------|-----------|--------------|------------|----------------|
| | yes | inspect | Wash | Drain | Bait | LW | Dry | Decon | same lake | first/frozen | didn't ask | |
| # groups | 606 | 16 | 259 | 1 | 0 | 2 | 46 | 86 | 68 | 201 | 0 | 609 |
| percentage of total groups asked | 100% | 3% | 43% | 0% | 0% | 0% | 8% | 14% | 11% | 33% | NA | |

Yes = showed AIS spread prevention awareness; Drain = drained bilge; Bait = emptied bait bucket/disposed of bait; LW = drained livewell; Dry = dried boat; Decon = visited decon station; Same Lake = boat only goes in this lake; First/Frozen = first launch of the season or frozen boat.

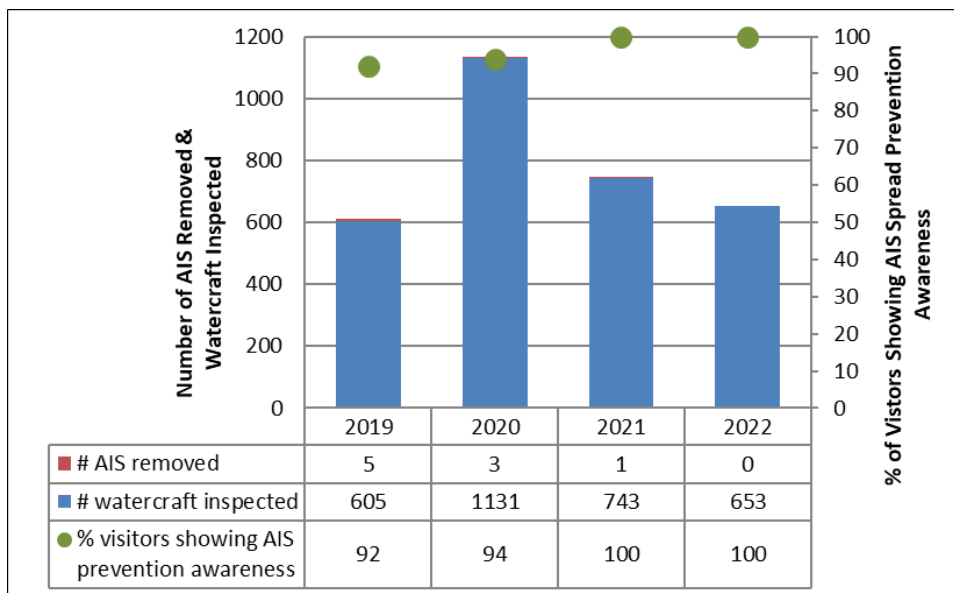
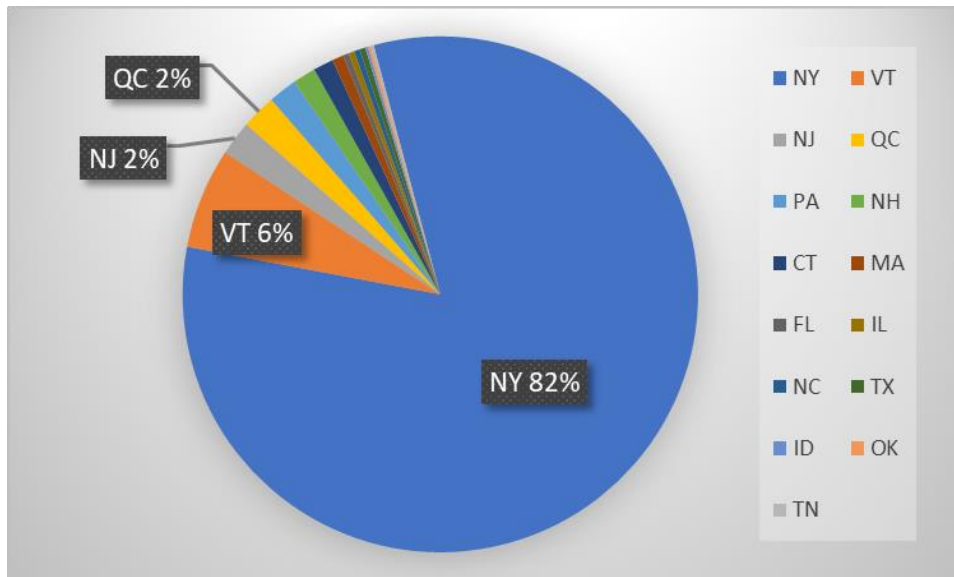
| Organisms Removed | Organism Type | | | | | | | total # AIS | % of inspected boats w/AIS |
|--------------------------|---------------|------|------|------|------|-----|-----|-------------|----------------------------|
| | Non-invasive | CLP* | EWM* | VLM* | SWF* | WC* | ZM* | | |
| # organisms | 0 | 0 | 0 | 0 | 0 | 0 | 0 | 0 | 0% |
| percentage of total orgs | 0% | 0% | 0% | 0% | 0% | 0% | 0% | | |

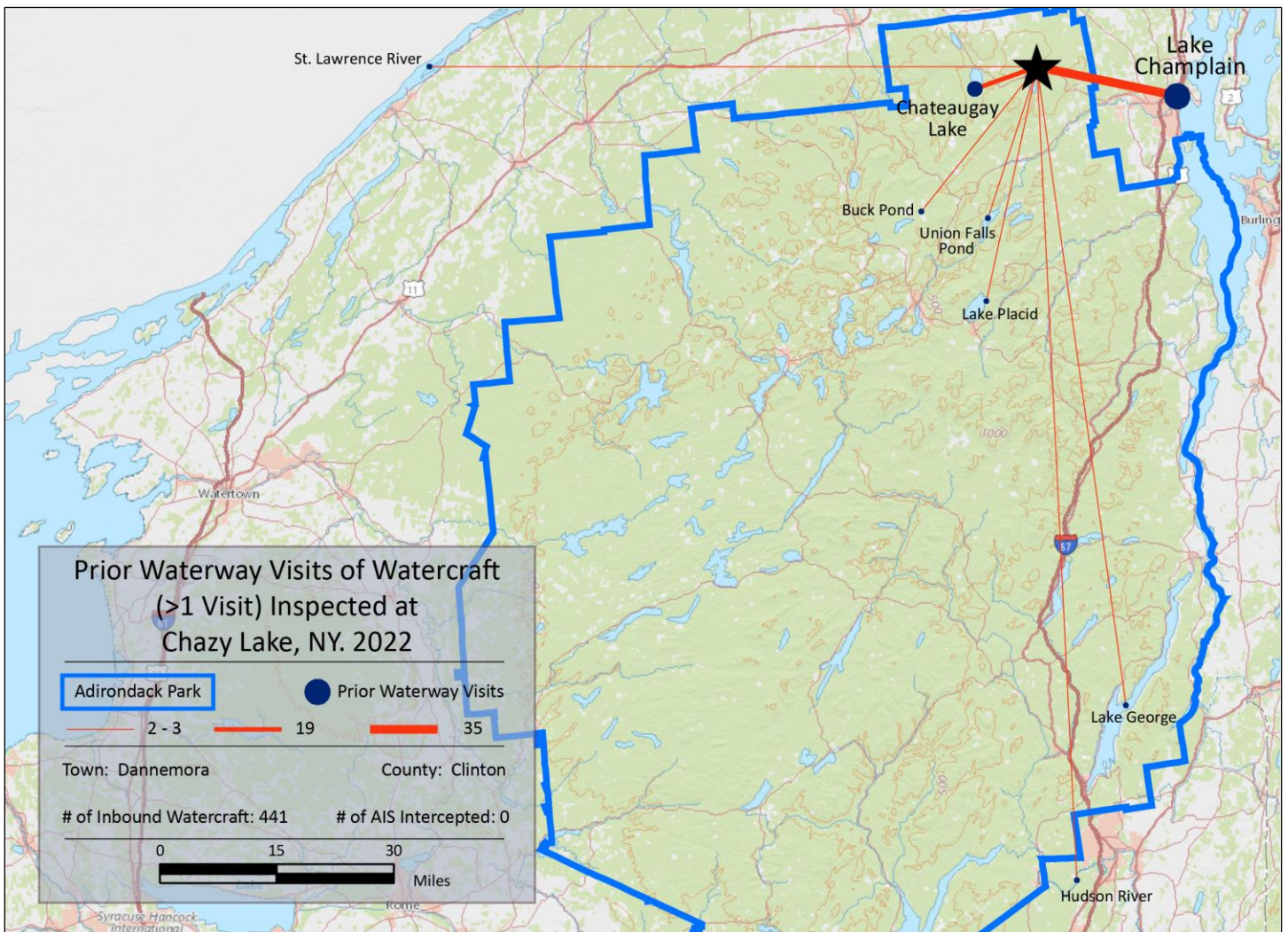
Non-invasive = native aquatic or terrestrial material; CLP = curly-leaf pondweed; EWM = Eurasian watermilfoil; VLM = variable-leaf milfoil; SWF = spiny waterflea; WC= water chestnut; ZM = zebra mussel; */AIS = aquatic invasive species.

| Previous Waterways for Launching Boats | # visits |
|--|----------|
| NONE | 239 |
| SAME LAKE - PREVIOUS VISIT | 125 |
| Lake Champlain | 35 |
| Chateaugay Lake | 19 |
| St. Lawrence River | 3 |
| Buck Pond (Rainbow Lake/Lake Kushaqua) | 2 |
| Hudson River | 2 |
| Lake George | 2 |
| Lake Placid | 2 |
| Union Falls Pond (Clinton/Franklin Counties) | 2 |

| Previous Waterways for Launching Boats | # visits |
|--|------------|
| Black Lake (St Lawrence County) | 1 |
| Clear Pond (Franklin County) | 1 |
| Great Sacandaga Lake | 1 |
| Lake Alice (Clinton County) | 1 |
| Lake Ontario | 1 |
| Lake Pleasant | 1 |
| Lower Saranac Lake | 1 |
| Middle Saranac Lake | 1 |
| Oneida Lake | 1 |
| Schroon Lake | 1 |
| Total | 441 |

State of Motorized Boat Registration
(n=554)





Chazy Lake Boat Launch