

# 2013 Report: Augur Lake

## Adirondack Lake Assessment Program



Adirondack Watershed Institute  
Paul Smith's College  
P.O. Box 265  
Paul Smiths, NY 12970

Report No. PSCAWI 2014-04

## Acknowledgements

The Adirondack Lake Assessment Program (ALAP) represents a collaboration between the Adirondack Watershed Institute (AWI) and Protect the Adirondacks (PROTECT). The AWI is a program of Paul Smith's College that conducts research and service work broadly focused on conservation and protection of water resources. PROTECT is a non-profit organization dedicated to the protection and stewardship of the public and private lands of the Adirondack Park, and to building the health and diversity of its human communities and economies for the benefit of current and future generations. PROTECT recruits volunteers to participate in the program and provides administrative support, while AWI trains volunteers, conducts site visits, analyzes samples, and writes the reports. As such, this report and all results and interpretations contained herein were the sole responsibility of AWI. The narrative and results presented in this report were produced by Daniel L Kelting, Executive Director, and Corey Laxson, Research Associate, both with the AWI. Laboratory work on samples received from ALAP volunteers was conducted by Corey Laxson, Elizabeth Yerger, Sean Patton, Brandon Morey, and Dan Kelting. Sean Regalado produced watershed maps in GIS. Nancy Bernstein and Evelyn Greene from PROTECT provided administrative support. The majority of lake sampling was conducted by volunteers, with some additional sampling by AWI staff. Paul Smith's College provided office and laboratory space. PROTECT is very grateful for the support provide to ALAP from the F.M. Kirby Foundation.



Please cite this report as:

Kelting\*, D.L., and C.L. Laxson. 2014. Adirondack Lake Assessment Program: 2013 Report, Augur Lake. Adirondack Watershed Institute of Paul Smith's College. Report No. PSCAWI 2014-04. 23p.

\*Corresponding author Dan Kelting at [dkelting@paulsmiths.edu](mailto:dkelting@paulsmiths.edu)

Cover Photo: Lower St Regis Lake taken in front of Spaulding-Paolozzi Environmental Science and Education Center of Paul Smith's College.

## Table of Contents

Quick Facts – Augur Lake ..... iv

List of Tables..... v

List of Figures ..... vi

Executive Summary..... vii

Introduction ..... 1

Methodology..... 4

Results for Augur Lake ..... 5

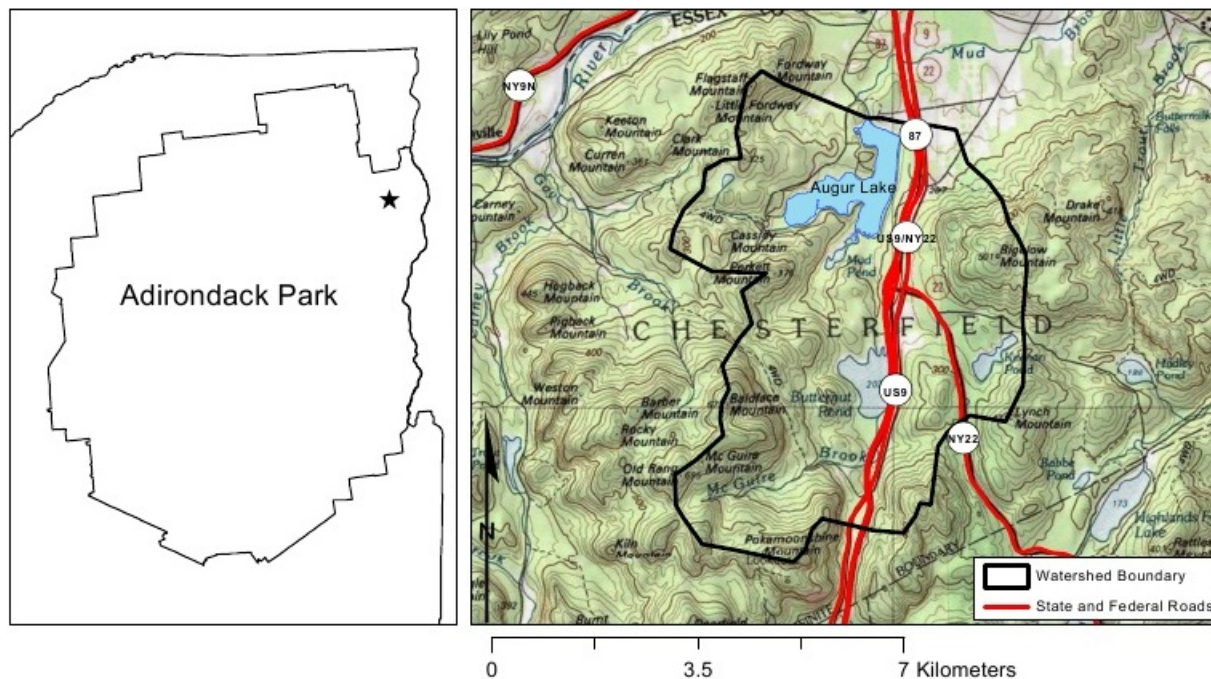
Literature Cited ..... 11

Appendix 1: Brief Review of Water Quality Indicators ..... 13



Initial processing of ALAP water samples and pH measurement in the AWI Environmental Research Lab

## Quick Facts - Augur Lake



**County:** Essex  
**Town:** Chesterfield

**Lake Area (ha):** 146  
**Watershed Area (ha):** 3,397

**Trophic Status:** Late Mesotrophic

**Years in ALAP:** 4

### 2013 Water Quality Indicators and Long-Term Trends:

| Indicator                    | Avg.   | Trend |
|------------------------------|--------|-------|
| Transparency (m)             |        |       |
| Total P (µg/L)               | 17.07  |       |
| Chlorophyll- <i>a</i> (µg/L) | 14.24  |       |
| Laboratory pH                | 9.08   |       |
| Conductance (µS/cm)          | 146.53 |       |
| Color (Pt-Co)                | 35.33  |       |

| Indicator         | Avg.  | Trend |
|-------------------|-------|-------|
| Alkalinity (mg/L) | 36.83 |       |
| Nitrate (µg/L)    | 1.49  |       |
| Chloride (mg/L)   | 25.73 |       |
| Calcium (mg/L)    | 12.56 |       |
| Sodium (mg/L)     | 16.44 |       |



### List of Tables

Table 1. Lakes that participated in ALAP in 2013 organized by number of years in the program. .... 1

Table 2. Lake and watershed characteristics for Augur Lake. .... 3

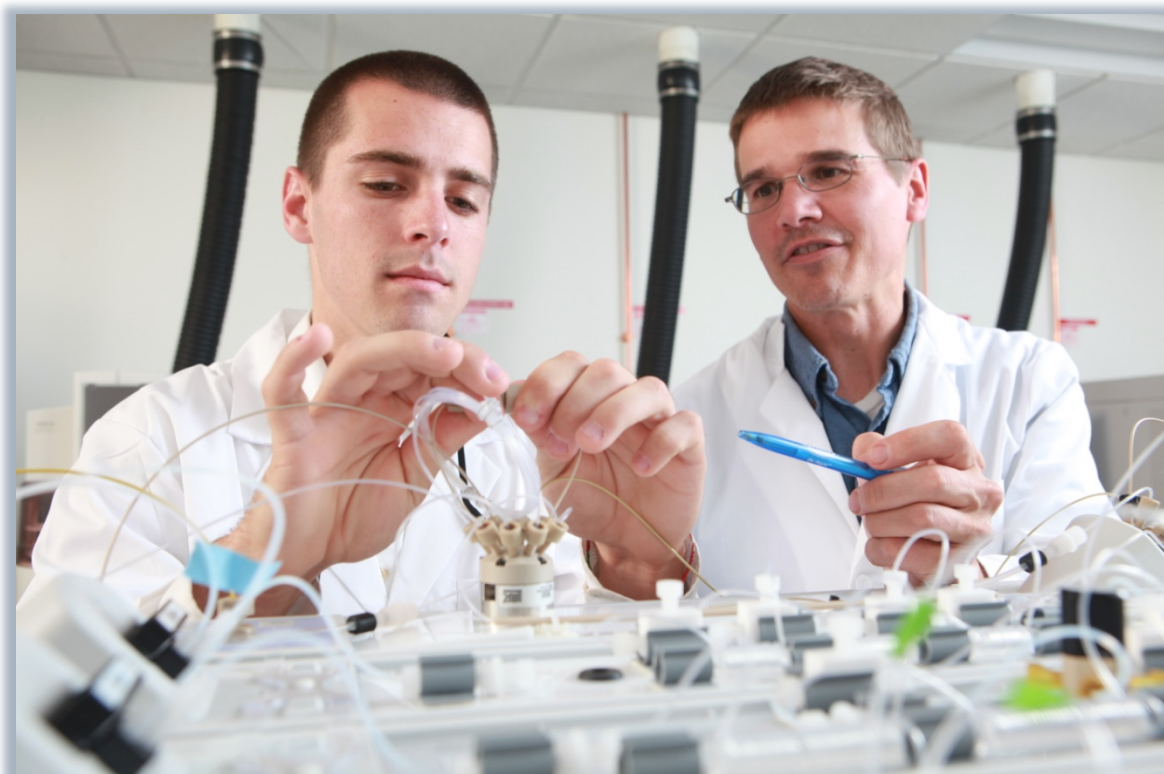
Table 3. Analytical methods performed in the AWI Environmental Research Lab. .... 4

Table 4. Trophic classification of lakes based on Carlson’s Trophic State Index (TSI). .... 5

Table 5. Water quality indicators by sampling date and average for Augur Lake in 2013. .... 6

Table 6. Trend analysis (linear regression) of the water quality indicators of Augur Lake. .... 9

Table 7. General trophic classification of lakes (adapted from Wetzel 2001) and NYS DEC assessment criteria. .... 17



Preparing the Lachat to analyze ALAP water samples for chloride and sulfate via ion chromatography in the AWI Environmental Research Lab.

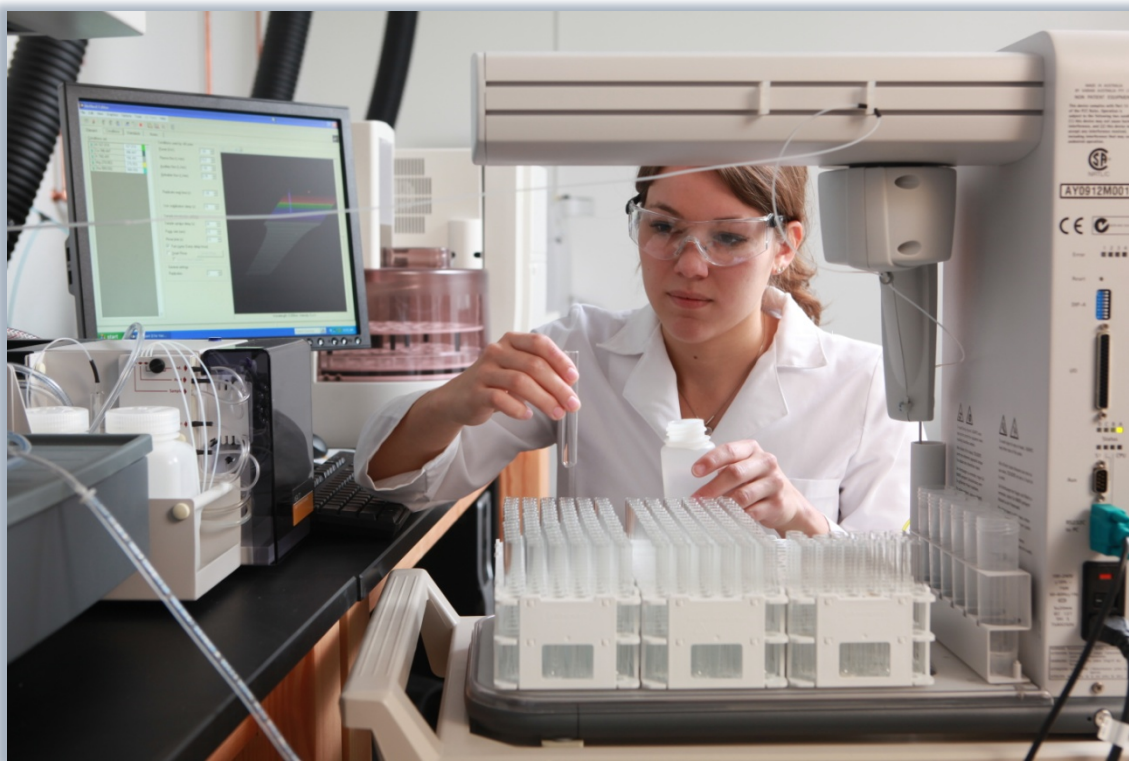
### List of Figures

Figure 1. Locations and names of lakes that participated in the Adirondack Lake Assessment Program (ALAP) in 2013. .... 2

Figure 2. Location and watershed for Augur Lake. .... 3

Figure 3. The annual average values of epilimnetic trophic indicators of Augur Lake, 2010-2013. (A) Secchi disk transparency, (B) total phosphorus concentration, (C) chlorophyll-a concentration, and (D) Carlson’s Trophic State Index. Vertical bars represent one standard deviation of the mean..... 8

Figure 4. The annual average values of water quality indicators of Augur Lake, 2010-2013. (A) Specific lab conductivity @ 25°C, (B) apparent color, (C) pH, (D) total alkalinity, and (E) chloride concentration. Vertical bars represent one standard deviation of the mean. .... 10



Transferring ALAP water samples to sample cups in preparation for determining metal concentrations via inductively coupled plasma optical emission spectroscopy in the AWI Environmental Research Lab.

## Executive Summary

Augur Lake is a 146 ha lake located in Essex County in the Town of Chesterfield. This lake is located within a 3,397 ha watershed dominated by forests. Augur Lake has been monitored by ALAP volunteers and the Adirondack Watershed Institute since 2010. Three samples were analyzed in 2013 for chlorophyll-a, total phosphorus, nitrate, pH, color, alkalinity, conductivity, chloride, calcium and sodium.

1. Trend analysis on the historical data will be performed next year when there are five consecutive years of data. Secchi disk transparency data was not received by the lab this year.
2. Total phosphorus concentrations during 2012 and 2013 were lower than in the first two years of monitoring. Carlson's Trophic Status Index for chlorophyll-a (53), and total phosphorus (45) both point to a late mesotrophic classification for Augur Lake. Historically the lake has fluctuated between eutrophic and mesotrophic characteristics.
3. Nitrate levels were low in Augur Lake, and almost below analytical detection. Low nitrate levels may favor blooms of cyanobacteria during the summer months. However, information from lake users and data on transparency and algal abundance does not suggest cyanobacteria blooms have been an issue.
4. Augur Lake is an alkaline water body with a historical average of 8.5 pH units. The buffering ability of the lake is strong (alkalinity 36.8 mg/L) and it is not sensitive to acid deposition (alkalinity >25 mg/L), unlike many of the lakes in the Adirondack region.
5. Adirondack lakes in watersheds without paved roads typically have sodium and chloride concentrations less than 0.55 and 0.24 mg/L, respectively (Keltling et al 2012). The 2013 sodium and chloride concentrations in Augur Lake averaged 16.64 mg/L for sodium and 25.73 mg/L for chloride, suggesting the lake chemistry is influenced by the 25.4 km of salted roads in the watershed. The concentrations of these chemicals are below the EPA drinking water standard established for sodium (20 mg/L) and the guideline recommended for chloride (250 mg/L).
6. Calcium concentrations in Augur Lake were greater than the majority (92%) of Adirondack lakes, averaging 12.6 mg/L. This concentration is within the threshold required for the establishment of a viable zebra mussel population (8-20 mg/L).

The data and accompanying analysis provided in this report give insight into the water quality of Augur Lake, more detailed limnological studies may be necessary to produce management recommendations.

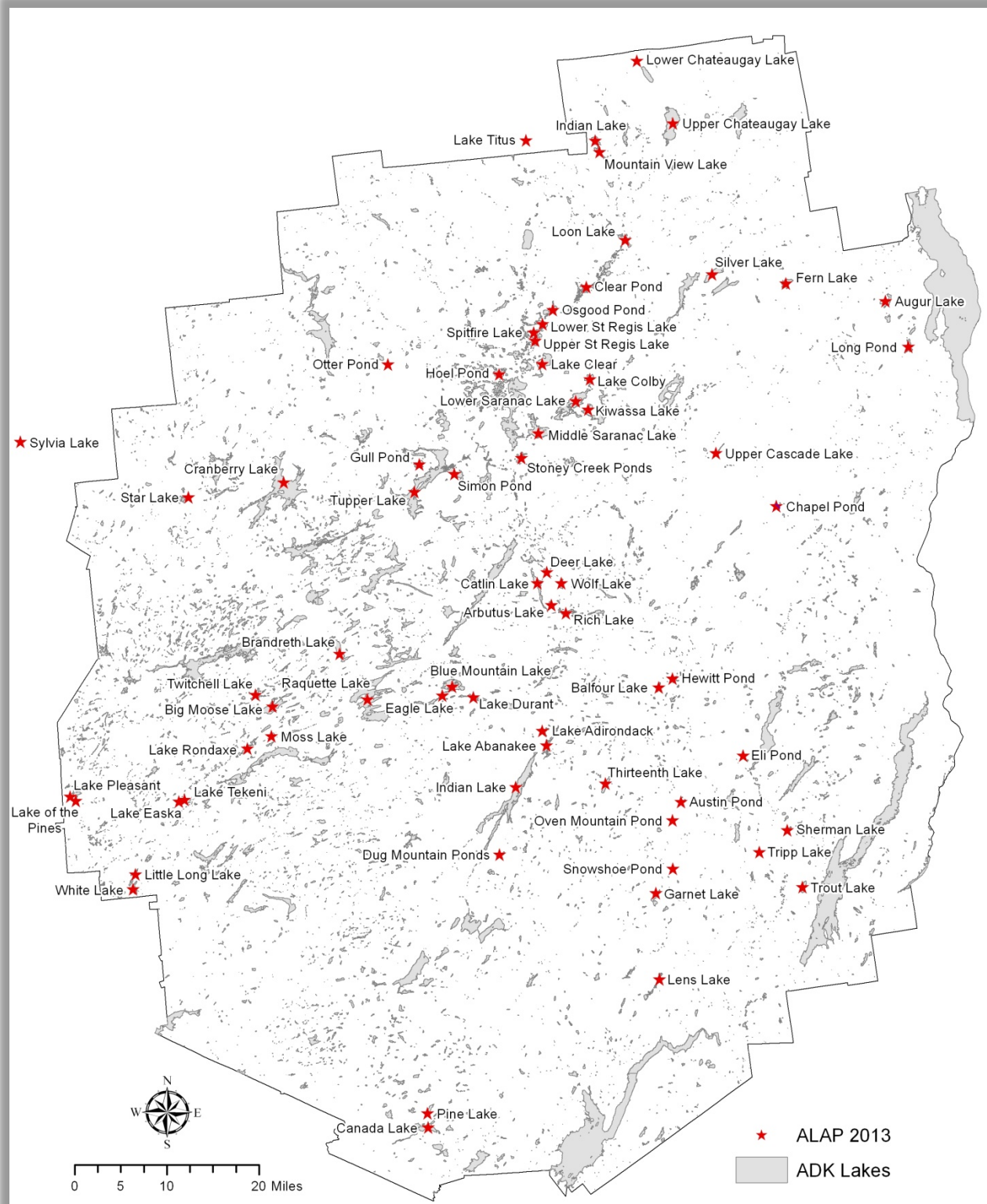
## Introduction

The Adirondack Lake Assessment Program (ALAP) is a cooperative citizen science lake monitoring program between Protect the Adirondacks (PROTECT), the Adirondack Watershed Institute of Paul Smith's College (AWI), and numerous dedicated volunteers from across the Adirondack Park and beyond. The objectives of ALAP are to (1) develop a reliable water quality database for Adirondack lakes, (2) document historical trends in their limnological condition, and (3) engender lake stewardship by providing opportunities for citizens to participate in scientific monitoring. To accomplish these objectives participating lakes are sampled throughout the summer by trained volunteers and analyzed by the AWI for indicators of trophic productivity (total phosphorus, chlorophyll, transparency) and water quality (nutrients, pH, alkalinity, color, chloride, and metals). ALAP continues to be a highly successful program. Established in 1998 with 9 participating lakes, the program has grown to 63 lakes in 2013 (Figure 1 and Table 1). For many lakes the ALAP dataset represents the only available source of current water quality information. This report details the results for Augur Lake.

**Table 1. Lakes that participated in ALAP in 2013 organized by number of years in the program.**

| Lake Name           | Years | Lake Name           | Years | Lake Name             | Years    |
|---------------------|-------|---------------------|-------|-----------------------|----------|
| Blue Mountain Lake  | 16    | Lake of the Pines   | 13    | Fern Lake             | 10       |
| Eagle Lake          | 16    | Long Pond           | 13    | Indian Lake (HC)      | 10       |
| Loon Lake           | 16    | Pine Lake           | 13    | Big Moose Lake        | 9        |
| Oven Mountain Pond  | 16    | Pleasant Lake       | 13    | Dug Mountain Pond     | 9        |
| Silver Lake         | 16    | Rich Lake           | 13    | Hewitt Lake           | 9        |
| Thirteenth Lake     | 15    | Tripp Lake          | 13    | Indian Lake (FC)      | 9        |
| Cranberry Lake      | 15    | Twitchell Lake      | 13    | Lake Abanakee         | 9        |
| Eli Pond            | 15    | Wolf Lake           | 13    | Moss Lake             | 9        |
| Gull Pond           | 15    | Balfour Lake        | 12    | Mountain View Lake    | 9        |
| Little Long Lake    | 15    | Garnet Lake         | 12    | Sylvia Lake           | 8        |
| Stony Creek Ponds   | 15    | Lens Lake           | 12    | Lower Chateaugay      | 7        |
| Austin Pond         | 14    | Lower Saranac Lake  | 12    | Upper Chateaugay Lake | 7        |
| Brandreth Lake      | 14    | Lower St Regis Lake | 12    | Chapel Pond           | 6        |
| Middle Saranac Lake | 14    | Snowshoe Pond       | 12    | Simon Pond            | 6        |
| Osgood Pond         | 14    | Spitfire Lake       | 12    | Lake Adirondack       | 5        |
| Trout Lake          | 14    | Upper St Regis Lake | 12    | Upper Cascade Lake    | 5        |
| White Lake          | 14    | Canada Lake         | 11    | <b>Augur Lake</b>     | <b>4</b> |
| Arbutus Lake        | 13    | Kiwassa Lake        | 11    | Lake Titus            | 4        |
| Catlin Lake         | 13    | Lake Colby          | 11    | Star Lake             | 4        |
| Deer Lake           | 13    | Raquette Lake       | 11    | Lake Clear            | 3        |
| Hoel Pond           | 13    | Tupper Lake         | 11    | Lake Durant           | 3        |





**Figure 1. Locations and names of lakes that participated in the Adirondack Lake Assessment Program (ALAP) in 2013.**

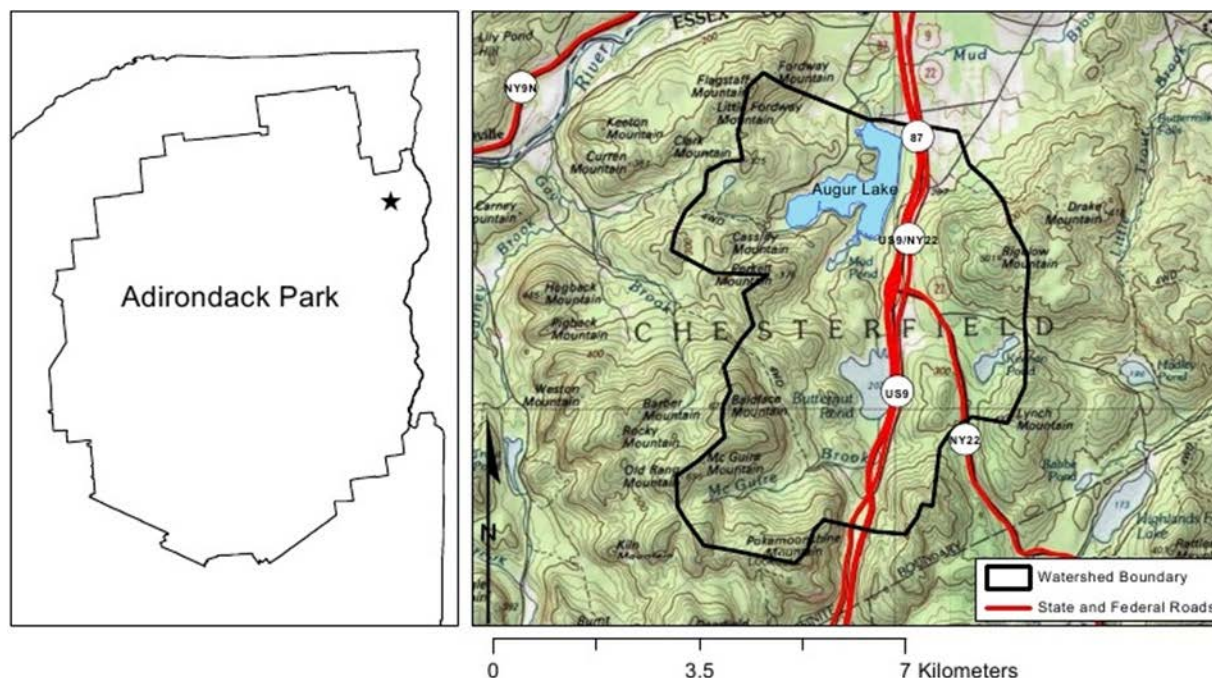


Figure 2. Location and watershed for Augur Lake.

Augur Lake is located in the northeastern Adirondacks (Figure 2) in Essex County in the Town of Chesterfield (Table 2). The lake is 146 ha in surface area and has 10 km of shoreline. The maximum depth is 6.4 m, total volume is 4,242,477 m<sup>3</sup>, and the lake flushes about 3.8 times per year. The Augur Lake watershed is 146 ha, 7% of which is surface water. The watershed is dominated by forest cover, with 63% deciduous, 15% evergreen, and 10% mixed forests. The watershed contains 9.1 km of local roads (county, town, and local) and 25.4 km of state roads (state and US highways).

Table 2. Lake and watershed characteristics for Augur Lake.

|                                  |                       |              |                           |           |
|----------------------------------|-----------------------|--------------|---------------------------|-----------|
| <b>Location</b>                  | County:               | Essex        | Latitude:                 | 44.4584   |
|                                  | Town:                 | Chesterfield | Longitude:                | -73.5012  |
| <b>Lake Characteristics</b>      | Lake Area (ha):       | 146          | Z-max (m):                | 6.4       |
|                                  | Lake Perimeter (km):  | 10           | Volume (m <sup>3</sup> ): | 4,242,477 |
|                                  |                       |              | Flushing Rate (T/Y):      | 3.8       |
| <b>Watershed Characteristics</b> | Watershed Area (ha):  | 3,397        | Residential (%):          | 0         |
|                                  | Surface Water (%):    | 7            | Agriculture (%):          | 3         |
|                                  | Deciduous Forest (%): | 63           | Commercial (%):           | 1         |
|                                  | Evergreen Forest (%): | 15           | Local Roads (km):         | 9.9       |
|                                  | Mixed Forest (%):     | 10           | State Roads (km):         | 25.4      |
|                                  | Wetlands (%):         | 0            |                           |           |

## Methodology

ALAP volunteers were trained by AWI staff in standard limnological sampling methods. Data was collected from the deepest location of the lake, 3 to 5 times during the summer months. During each sampling event volunteers observed the secchi transparency reading by lowering a standard 20 cm black and white secchi disk to a depth where it could no longer be seen. This process was repeated and the average secchi depth for that day was recorded. Surface water samples were collected using a 2 meter integrated tube sampler. The contents of the tube were poured into a 1 liter brown bottle and thoroughly mixed. A 250 mL aliquot of the integrated sample was collected for chemical analysis and frozen until it could be delivered to the AWI Environmental Research Lab located in the Spaulding-Paolozzi Environmental Science and Education Center on the campus of Paul Smith's College. A second 250 mL aliquot was filtered through a 0.45 µm cellulose membrane filter for chlorophyll-a analysis. The filter was retrieved, wrapped in foil and frozen until delivery to the AWI Environmental Research Lab.

Samples were analyzed for pH, conductivity, alkalinity, total phosphorus, nitrate, chlorophyll-a, chloride calcium and sodium at the AWI Environmental Research Lab following the analytical methods described in Table 3. Descriptive details on each of the analytes and their relation to water quality can be found in Appendix 1. Results for each sampling period were tabulated and annual averages were compared between lakes. Trend analysis was conducted on historical data for lakes with ≥5 years of data using simple linear regression.

**Table 3. Analytical methods performed in the AWI Environmental Research Lab.**

| Analyte           | Method Description   | Reference                   |
|-------------------|--|-----------------------------|
| Lab pH            | Mettler Toledo standard pH electrode                         | APHA                        |
| Conductivity      | Conductivity at 25° C via Mettler Toledo conductivity cell   | APHA 2510 B                 |
| Apparent Color    | Single wavelength method with PtCO standards                 | APHA 2120 C                 |
| Chlorophyll-a     | Trichromatic method uncorrected for phaeophyton              | APHA 10200 H                |
| Total Phosphorus  | Acid-persulfate digestion, automated ascorbic acid reduction | APHA 4500-P H               |
| Nitrate + Nitrite | Automated cadmium reduction                                  | APHA 4500-NO <sub>3</sub> I |
| Alkalinity        | Automated methyl orange method                               | EPA 301.2                   |
| Chloride          | Automated ion chromatography                                 | EPA 300.0                   |
| Metals            | Inductively coupled plasma optical emission spectroscopy     | EPA 200.7                   |

Average annual values for secchi disk transparency, total phosphorus, and chlorophyll-a were used to calculate Carlson's Trophic Status Index, (TSI), a commonly used quantitative index for classifying lakes based on trophic status (Carlson 1977). TSI values are calculated as follows:

- $TSI (\text{Secchi Disk}) = 60 - 16.41 \times \ln[\text{Secchi Disk (m)}]$
- $TSI (\text{Chlorophyll}) = 30.6 + 9.81 \times \ln[\text{Chlorophyll a } (\mu\text{g/L})]$
- $TSI (\text{Total Phosphorus}) = 4.15 + 14.42 \times \ln[\text{Total Phosphorus } (\mu\text{g/L})]$

Typically TSI values are between 0 and 100. Lakes with TSI values less than 40 are classified as oligotrophic, TSI values between 40 and 50 are classified as mesotrophic, and TSI values greater than 50 are classified as eutrophic. A detailed description of TSI values and likely lake attributes is found in Table 4.

**Table 4. Trophic classification of lakes based on Carlson's Trophic State Index (TSI).**

| TSI Value | Trophic Classification* | Likely Attributes  |
|-----------|-------------------------|--|
| <30       | Oligotrophic            | Clear water, high oxygen throughout hypolimnion during the entire year   |
| 30-40     | Oligotrophic            | Clear water, periods of hypolimnetic anoxia possible during the summer in relatively shallow lakes   |
| 40-50     | Mesotrophic             | Moderately clear, increasing probability of hypolimnetic anoxia during the summer  |
| 50-60     | Eutrophic               | Mildly eutrophic. Decreased transparency, hypolimnetic anoxia, and warm water fishery only. Supports all recreational / aesthetic uses but threatened. |
| 60-70     | Eutrophic               | Dominance of blue-green algae, algal blooms likely, extensive macrophytes growth in shallow water  |
| 70-80     | Eutrophic               | Heavy algal blooms possible throughout summer, hyper eutrophic   |
| >80       | Eutrophic               | Algal scum, summer fish kills, few macrophytes due to algal shading  |

\*Definitions for trophic classes are provided in the Appendix

## Results for Augur Lake

### *Transparency*

Data on secchi transparency was not received by the lab this year. Over the 4 years of participation in ALAP, transparency of Augur Lake has ranged from 1 to 2.2 meters (Figure 3A). Background information on transparency is provided in the Appendix.

### *Total Phosphorus*

Total Phosphorus concentrations at station #1 ranged from 14.1 to 20.4 µg/L and averaged 17.1 µg/L. At station #2 concentrations ranged from 13.1 to 19.9 and averaged 15.6 µg/L (Table 5). The majority of lakes in the ALAP data set (88%) have an average total phosphorus concentration less than Augur Lake. Historically, the annual average total phosphorus of Augur Lake has ranged from 13 to 50 µg/L (Figure 3B). Not enough data was available to conduct trend analysis. Background information on total phosphorus is provided in the Appendix (page 14).

Table 5. Water quality indicators by sampling date and average for Augur Lake in 2013.

| Water Quality Indicator                   | Sampling Date |           |           | Average |
|---|---------------|-----------|-----------|---------|
|   | 8/15/2013     | 8/28/2013 | 9/17/2013 |         |
| <i>Location 1</i>                         |               |           |           |         |
| Secchi Transparency (m)                   |               |           |           |         |
| Total Phosphorus ( $\mu\text{g/L}$ )      | 16.70         | 14.10     | 20.40     | 17.07   |
| Chlorophyll- <i>a</i> ( $\mu\text{g/L}$ ) | 4.78          | 6.19      | 31.74     | 14.24   |
| Laboratory pH                             | 9.36          | 9.47      | 8.41      | 9.08    |
| Specific Conductance ( $\mu\text{S/cm}$ ) | 140.10        | 137.70    | 161.80    | 146.53  |
| Color (Pt-Co)                             | 41.00         | 38.00     | 27.00     | 35.33   |
| Alkalinity (mg/L)                         | 34.00         | 35.30     | 41.20     | 36.83   |
| Nitrate-Nitrogen ( $\mu\text{g/L}$ )      | 1.08          | 2.11      | 1.27      | 1.49    |
| Chloride (mg/L)                           | 25.00         | 25.30     | 26.90     | 25.73   |
| Sulfate (mg/L)                            | 3.12          | 3.05      | 2.98      | 3.05    |
| Aluminum (mg/L)                           | 0.11          | 0.13      | 0.12      | 0.12    |
| Calcium (mg/L)                            | 12.29         | 11.72     | 13.66     | 12.56   |
| Magnesium (mg/L)                          | 3.47          | 3.34      | 3.73      | 3.51    |
| Potassium (mg/L)                          | 0.58          | 0.54      | 0.60      | 0.57    |
| Sodium (mg/L)                             | 16.59         | 15.95     | 16.77     | 16.44   |
| <i>Location 2</i>                         |               |           |           |         |
| Secchi Transparency (m)                   |               |           |           |         |
| Total Phosphorus ( $\mu\text{g/L}$ )      | 13.10         | 13.70     | 19.90     | 15.57   |
| Chlorophyll- <i>a</i> ( $\mu\text{g/L}$ ) | 6.35          | 9.28      | 25.73     | 13.79   |
| Laboratory pH                             | 9.40          | 9.29      | 7.73      | 8.81    |
| Specific Conductance ( $\mu\text{S/cm}$ ) | 124.90        | 90.20     | 160.70    | 125.27  |
| Color (Pt-Co)                             | 34.00         | 3.00      | 41.00     | 26.00   |
| Alkalinity (mg/L)                         | 31.70         | 27.50     | 42.10     | 33.77   |
| Nitrate-Nitrogen ( $\mu\text{g/L}$ )      | 2.43          | 1.83      | 2.27      | 2.18    |
| Chloride (mg/L)                           | 23.40         | 14.80     | 27.00     | 21.73   |
| Sulfate (mg/L)                            | 2.83          | 1.80      | 2.99      | 2.54    |
| Aluminum (mg/L)                           | 0.12          | 0.10      | 0.12      | 0.11    |
| Calcium (mg/L)                            | 9.36          | 8.33      | 13.35     | 10.35   |
| Magnesium (mg/L)                          | 2.91          | 2.07      | 3.61      | 2.86    |
| Potassium (mg/L)                          | 0.46          | 0.31      | 0.57      | 0.45    |
| Sodium (mg/L)                             | 14.05         | 8.55      | 15.99     | 12.86   |



### *Chlorophyll-a*

Chlorophyll-a concentrations at station #1 ranged from 4.8 to 31.8 µg/L and averaged 14.2 µg/L. At station #2 values ranged from 6.4 to 25.7 µg/L, with an average 2013 value of 13.8 µg/L (Table 5). The majority of lakes in the ALAP data set (97%) have an average chlorophyll concentration less than Augur Lake. Average chlorophyll-a of Augur Lake has ranged from 5 to 14 µg/L over the past 4 years (Figure 3C). Not enough data was available to conduct trend analysis. Background information on chlorophyll-a is provided in the Appendix.

### *Carlson's Trophic State Index*

The TSI for Augur Lake calculated with secchi transparency (no data), chlorophyll (52.9), and total phosphorus (44.9) average to a TSI value of 48.9, suggesting a mesotrophic classification for Augur Lake (Table 4). The trophic state of Augur Lake typically fluctuates around the Mesotrophic-Eutrophic boundary with all three indicators of trophic status in close agreement (Figure 3D).

### *Nitrate-Nitrogen*

Nitrate concentration of Augur Lake was low throughout the summer and below our laboratory practical quantitation level (< 5 µg/L). Background information on nitrogen is provided in the Appendix (page 14).

### *pH*

At station #1 pH ranged from 8.4 to 9.5 and averaged 9.1 in 2013 (Table 5). At station #2 pH ranged from 7.7 to 9.4, with an average 2013 value of 8.8 pH units. All of the ALAP lakes (100%) have an average pH less than Augur Lake. Historically, average pH values of Augur Lake have remained relatively constant, ranging from 7.7 to 9.1 (Figure 4C).

### *Alkalinity*

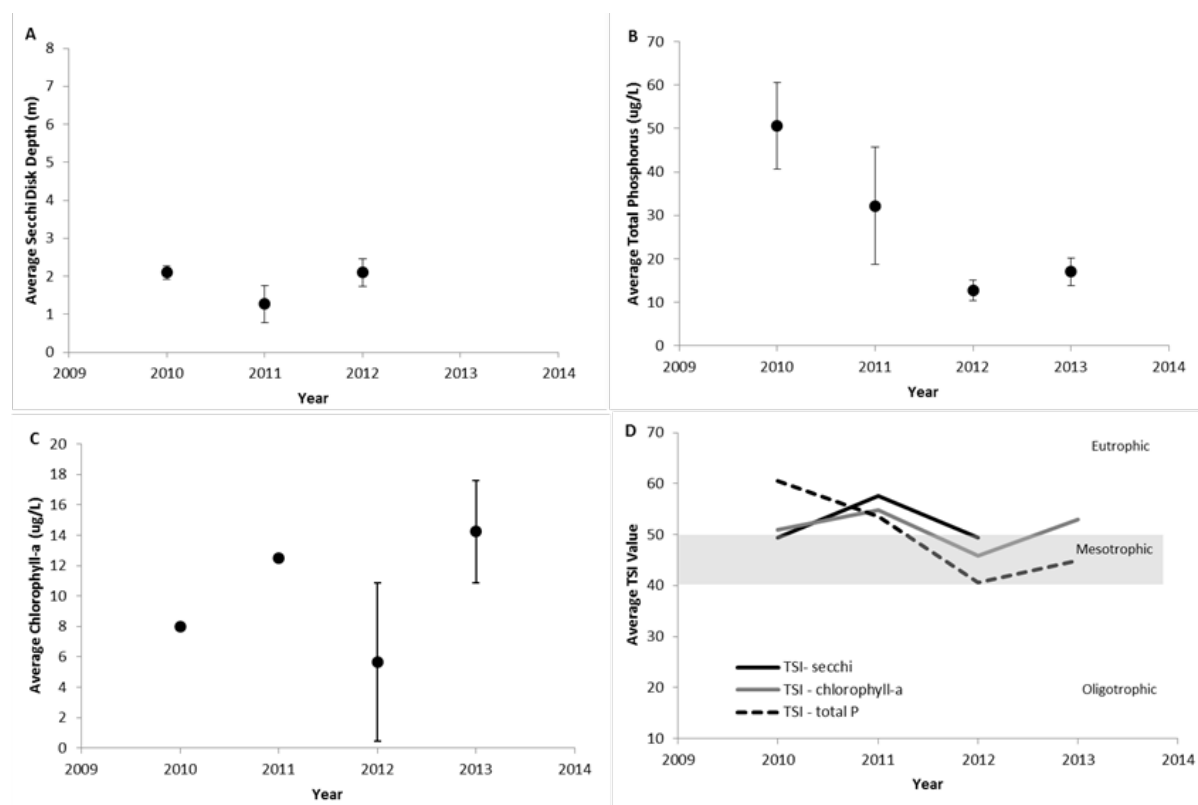
Alkalinity at station #1 ranged from 34 to 41.1 mg/L and averaged 36.8 mg/L in 2013 (Table 5). At station #2, alkalinity ranged from 27.5 to 42.1 mg/L, with an average 2013 value of 33.8 mg/L. The majority of lakes in the ALAP data set (92%) have an average alkalinity concentration less than Augur Lake. Background information on alkalinity is provided in the Appendix.

### *Color*

Apparent color at station #1 values ranged from 27 to 41 PtCo units and averaged 35.53 in 2013 (Table 5). At station #2, apparent color ranged from 3 to 41 PtCo units, with an average 2013 value of 26 PtCo units. The majority of lakes in the ALAP data set (80%) have more coloration than Augur Lake. Background information on color is provided in the Appendix.

### *Specific Conductance*

Conductivity at station #1 values ranged from 137 to 161 µS/cm and averaged 146.5 in 2013 (Table 5). At station #2, conductivity ranged from 3 to 41 PtCo units, with an average 2013 value of 26 PtCo units. The majority of lakes in the ALAP data set (92%) have a lower conductance value than Augur Lake. Historically, average conductivity of Augur Lake has ranged from 120 to 180 µS/cm (Figure 4A). Background information on specific conductance is provided in the Appendix.



**Figure 3. The annual average values of epilimnetic trophic indicators of Augur Lake, 2010-2013. (A) Secchi disk transparency, (B) total phosphorus concentration, (C) chlorophyll-a concentration, and (D) Carlson's Trophic State Index. Vertical bars represent one standard deviation of the mean.**

### Chloride

Chloride concentration at station #1 ranged from 25.0 to 26.9 mg/L and averaged 25.7 in 2013 (Table 5). At station #2, chloride ranged from 14.8 to 27.0 mg/L, with an average 2013 value of 21.7 mg/L. The majority of lakes in the ALAP data set (93%) have a chloride concentration lower than that of Augur Lake. Historically, average chloride concentrations of Augur Lake have ranged from 42 to 25 mg/L (Figure 4E). Not enough data was available to conduct trend analysis. Background information on chloride is provided in the Appendix.

### Calcium

Calcium concentrations at station #1 ranged from 12.3 to 13.7 mg/L with an average value of 12.6 mg/L in 2013 (Table 5). At station #2, calcium ranged from 8.3 to 13.4 mg/L, with an average 2013 value of 10.4 mg/L. The majority of ALAP lakes (92%) have calcium concentrations less than Augur Lake. There is insufficient data at this time for a historical trend analysis of calcium. Background information on calcium is provided in the Appendix.

*Sodium*

Sodium concentrations at station #1 ranged from 16.0 to 16.8 mg/L with an average value of 16.4 mg/L in 2013 (Table 5). At station #2, sodium ranged from 8.6 to 16.0 mg/L, with an average 2013 value of 12.9 mg/L. The majority of ALAP lakes (95%) have a sodium concentration less than that of Augur Lake. Not enough data was available to conduct trend analysis. Background information on sodium is provided in the Appendix.

**Table 6. Trend analysis (linear regression) of the water quality indicators of Augur Lake.**

| Indicator        | Slope Coefficient | R-square | P-value |
|------------------|-------------------|----------|---------|
| Transparency     |                   |          |         |
| Total Phosphorus |                   |          |         |
| Chlorophyll-a    |                   |          |         |
| Conductivity     |                   |          |         |
| Apparent Color   |                   |          |         |
| pH               |                   |          |         |
| Alkalinity       |                   |          |         |
| Chloride         |                   |          |         |

Insufficient data for trend analysis at this time

\*This report defines P-values less than or equal to 0.05 as statistically significant.

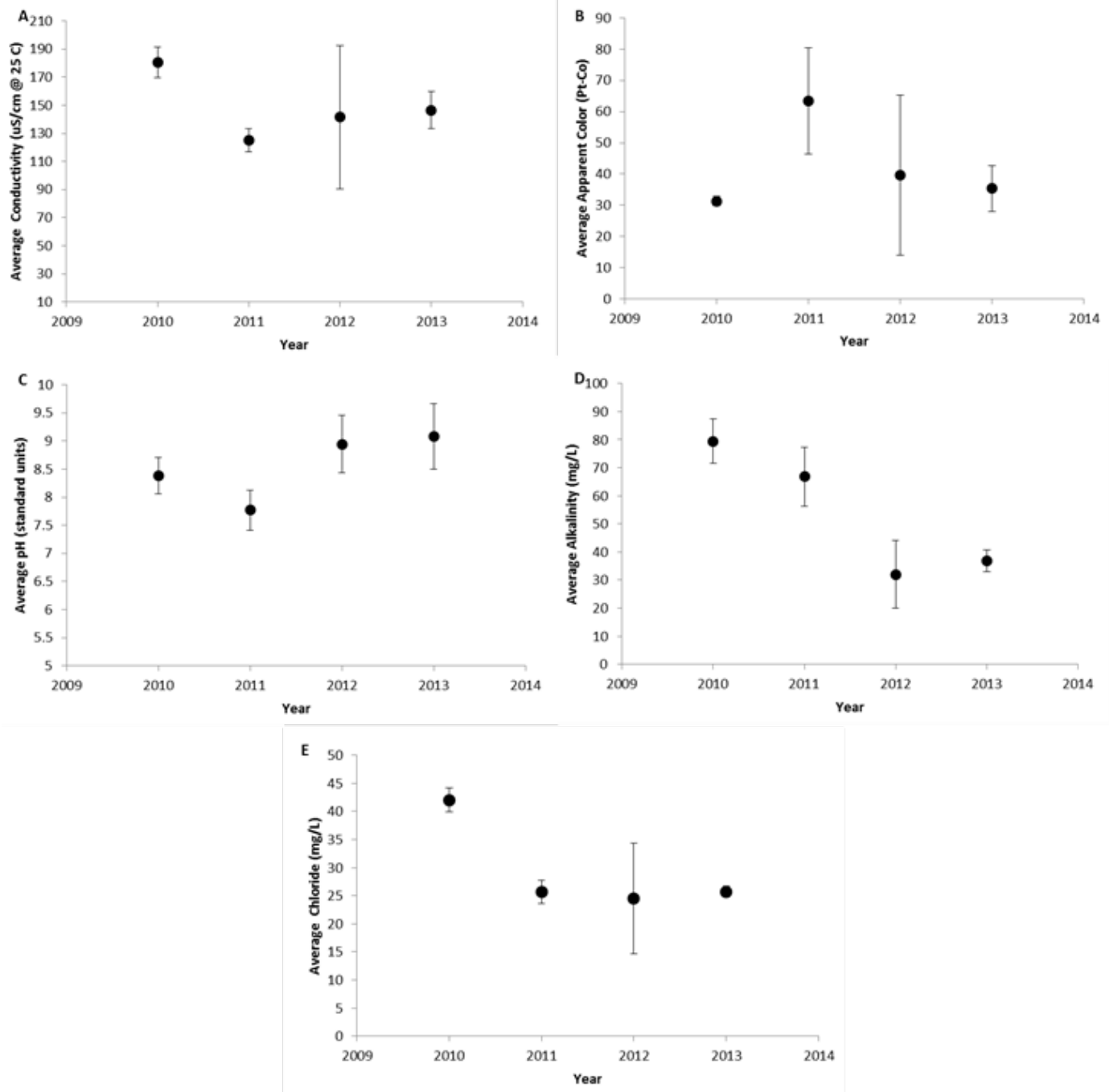


Figure 4. The annual average values of water quality indicators of Augur Lake, 2010-2013. (A) Specific lab conductivity @ 25°C, (B) apparent color, (C) pH, (D) total alkalinity, and (E) chloride concentration. Vertical bars represent one standard deviation of the mean.

## Literature Cited

- Bachmann, R.W., B.L. Jones, D.D. Fox, M. Hoyer, L.A. Bull, and D.E. Canfield. 1996. Relations between trophic state indicators and fish in Florida (U.S.A.) lakes. *Canadian Journal of Fisheries and Aquatic Sciences*, 53:842-855.
- Bertrand-Krajewski, J.L. 2004. TSS concentrations in sewers estimated from turbidity measurements by means of linear regression accounting for uncertainties in both variables. *Water Science and Technology*, 50(11):81-88.
- Carmichael, W.W. 2008. A world overview one-hundred, twenty-seven years of research on toxic cyanobacteria--Where do we go from here? In: Hudnell, H.K. (ed.) *Cyanobacterial Harmful Algal Blooms: State of the Science and Research Needs*. Advances in Experimental Medicine & Biology, Vol. 619. Springer. 500 pp.
- Carlson, R.E. 1977. A trophic state index for lakes. *Limnology and Oceanography*, 22(2):361-369.
- Carpenter, S.R., J.F. Kitchell, and J.R. Hodgson. 1985. Cascading trophic interactions and lake productivity. *Bioscience*, 35(10):634-639.
- Cohen, A. 2004. Calcium requirements and the spread of zebra mussels. California Sea Grant, Coastal Ocean Research, San Francisco Estuary Institute. 2p.
- Corsi, S.R., Graczyk, D.J., Geis, S.W., Booth, N.L., and Richards, K.D. 2010. A fresh look at road salt: aquatic toxicity and water quality impacts on local, regional, and national scales. *Environmental Science and Technology*, 44(19):7376-7382.
- Daley, M.L., J.D. Potter, and W.H. McDowell. 2009. Salinization of urbanizing New Hampshire streams and groundwater: effects of road salt and hydrologic variability. *Journal of the North American Benthological Society*, 28(4):929-940.
- Davies-Colley, R.J., and D.G. Smith. 2001. Turbidity, suspended sediment, and water clarity: a review. *Journal of the American Water Resources Association*, 37(5):1085-1101.
- Dillon, P.J., and L.A. Molot. 1997. Dissolved organic and inorganic carbon mass balances in central Ontario lakes. *Biogeochemistry*, 36:29-42.
- Driscoll, C.T., K.M. Driscoll, M.J. Mitchell, and D.J. Raynal. 2003. Effects of acidic deposition on forest and aquatic ecosystems in New York State. *Environmental Pollution*, 123:327-336.
- Godfrey, P.J., M.D. Mattson, M.-F. Walk, P.A. Kerr, O.T. Zajicek, and A.Ruby III. 1996. The Massachusetts Acid Rain Monitoring Project: Ten Years of Monitoring Massachusetts Lakes and Streams with Volunteers. Publication No. 171. University of Massachusetts Water Resources Research Center.
- Katsev, S., I. Tsandev, I. L'Heureux, and D.G. Rancourt. 2006. Factors controlling long-term phosphorus efflux from lake sediments: Exploratory reactive-transport modeling. *Chemical Geology*, 234:127-147.



Kelting, D.L., C.L. Laxson, E.C. Yerger. 2012. A regional analysis of the effect of paved roads on sodium and chloride in lakes. *Water Research*, 46(8):2749-2758.

Lopez, C.B., Jewett, E.B., Dortch, Q., Walton, B.T., Hudnell, H.K. 2008. Scientific Assessment of Freshwater Harmful Algal Blooms. Interagency Working Group on Harmful Algal Blooms, Hypoxia, and Human Health of the Joint Subcommittee on Ocean Science and Technology. Washington, DC.

Monteith, D.T., J.L. Stoddard, C.D. Evans, H.A. deWit, M. Forsius, T. Høgåsen, A. Wilander, B.L. Skjelkvåle, D.S. Jeffries, J. Vuorenmaa, B. Keller, J. Kopáček, and J. Vesely. 2007. Dissolved organic carbon trends resulting from changes in atmospheric deposition chemistry. *Nature*, 450(22):537-541.

Smeltzer, E., W.W. Walker Jr., V. Garrison. 1989. Eleven years of lake Eutrophication monitoring in Vermont: a critical evaluation. *Enhancing States' Lake Management Program*, 1989:53-62.

Søndergaard, M., J.P. Jensen, and E. Jeppesen. 2003. Role of sediment and internal loading of phosphorus in shallow lakes. *Hydrobiologia*, 506-509:135-145.

Wetzel, R.G. 2001. *Limnology, Lake and River Ecosystems*, 3<sup>rd</sup> Edition. Academic Press, New York. 1006pp.

White, D.J., M.R. Noll, and J.C. Makarewicz. 2008. Does manganese influence phosphorus cycling under suboxic lake water conditions? *Journal of Great Lakes Research*, 34(4):571-580.

## Appendix 1: Brief Review of Water Quality Indicators

*Alkalinity* - Alkalinity measures the buffering capacity of a lake, which is the ability of the lake to resist a change in pH. High alkalinity lakes are well buffered against changes in pH, while low alkalinity lakes are poorly buffered against changes in pH. Thus, a high alkalinity lake would have a more stable pH compared to a low alkalinity lake, and a more stable pH is less stressful to aquatic life. Alkalinity largely depends on the concentration of calcium carbonate in the water, and lakes with less than 10 ppm calcium carbonate are highly sensitive to acidification, while lakes with greater than 20 ppm calcium carbonate are not sensitive to acidification (Godfrey et al. 1996).

*Calcium, Magnesium, Potassium, Sodium* – all essential elements for plant growth, but generally not limiting in aquatic systems and thus do not contribute to algae blooms. Calcium, Magnesium, and Potassium are macronutrients, and Sodium is a micronutrient. All are naturally occurring elements that are released through rock weathering plus smaller quantities from atmospheric deposition. Though, the rocks of the Upper Saranac Lake watershed have low concentrations of these elements, so they are found in low concentrations in lakes under natural conditions. Road salting has elevated the sodium concentration in Adirondack lakes and perhaps the concentrations of the other elements through exchange processes occurring within the soil (Kelting et al. 2012). High concentrations of sodium in drinking water may cause health problems for people with hypertension (Corsi et al. 2010), and thus the US EPA has set a drinking water standard of 20 ppm for sodium, though there is debate over the validity of this standard (it may be too low). Lake calcium concentration also relates to habitat suitability for zebra mussels, as researchers have reported minimum calcium concentrations ranging for 8 to 20 ppm to support a viable population (Cohen 2004). So, calcium is an important indicator to track to assess the risk for zebra mussel infestation. Calcium may also be important to understand internal P loading, Ca-P (Pollman and James 2011).

*Carlsons Trophic Status Index (TSI)* – a numerical trophic state index that incorporates most lakes into a scale of 0-100. Each major division (10, 20, 30 etc.) represents a doubling of algal biomass. The index can be calculated from Secchi disk transparency, chlorophyll-a, or total phosphorus concentrations.

*Chloride* – an anion that can have negative effects on aquatic life when at high concentrations (Corsi et al. 2010), and can impart an undesirable taste to drinking water, also when at high concentrations. The US EPA has a drinking water guideline of 250 ppm for salty taste, but this is not an enforceable standard. The principal source of chloride in lakes in our region is road salt (Kelting et al. 2012).

*Chlorophyll a* – the primary photosynthetic pigment found in all species of algae that is used as an index of algal biomass (Wetzel 2001). Chlorophyll *a* is not a direct measure of algal biomass as the concentration of chlorophyll varies somewhat by species and environmental conditions. This said, increases in chlorophyll *a* are generally associated with increased algal production, and the concentration of chlorophyll *a* is widely considered as the most direct measure of the trophic state of lakes. Algal biomass is affected by nutrient availability, water temperature, and light, so there can be considerable variation in chlorophyll *a* concentrations throughout the year depending on which of these three factors is limiting growth at a particular time. Though, major changes in algal biomass (e.g. a

bloom) and thus chlorophyll *a* are usually related to changes in the availability of phosphorus, nitrogen, and silica (Wetzel 2001).

*Color* – can limit light penetration and plant productivity and reduces water clarity. Color is influenced by the types and concentrations of suspended and dissolved particles in the water. Sources of these particles include dissolved organic carbon, algae, minerals and soils. Tannins produced from decomposition of plant and animal matter give water a tea color, particularly when associated with wetlands. Algae produce a variety of colors that range from red to green, depending on the type. Dissolved iron produces red to brown colors and dissolved manganese produces black, both of these metals are abundant in Adirondack waters. True Color, measured on filtered water samples, is used by the NYS DEC when interpreting total phosphorus concentrations in relation to eutrophication. A greater percentage of the total phosphorus is bound to organic matter in darker colored waters, and thus is less available compared to the total phosphorus measured in lighter colored waters.

*Conductivity* – pure water is a poor conductor of electricity. The ability of water to conduct electricity increases as the concentration of dissolved ions in the water increases. Thus, conductivity is measured as an indicator of dissolved ions and is a very useful surrogate when the relationships between ion concentrations and conductivity are known. For example, conductivity can be used to estimate sodium and chloride concentrations (Daley et al. 2009).

*Dissolved Organic Carbon* – a food source for aquatic biota, plays a significant role in lake chemistry, imparts color to the water (e.g. tea colored water is from humic substances), and affects water clarity. Dissolved organic carbon enters streams and lakes from uplands or is produced in lakes and streams. Forested watersheds in particular have been shown to export a significant amount of dissolved organic carbon to lakes (Dillon and Molot 1997). Dissolved organic carbon concentrations in Adirondack lakes have increased over the last 20 years, and this increase may relate to changes in acid deposition (Monteith et al. 2007).

*Dissolved Oxygen* – needed for survival and health of many forms of aquatic life, as well as affects the availability of phosphorus. Dissolved oxygen is consumed during respiration and decomposition and replenished by photosynthesis and diffusion from the atmosphere. The lack of cycling during summer stratification inhibits the replenishment of dissolved oxygen to bottom waters in the summer, resulting in depletion of dissolved oxygen as previously mentioned. Depletion of dissolved oxygen in bottom waters may result in increased release of phosphorus from the dissolution of iron-phosphates contained in the sediment (Katsev et al. 2006).

*Eutrophic* – From the Greek words *Eu*, meaning good and *troph*, meaning nourishment; eutrophic lakes have abundant levels of nutrients. As a result of high nutrient availability eutrophic lakes are typified by high algal productivity, low transparency, high organic matter in the sediments, and periods of anoxia in the bottom of the water column (hypolimnion). Eutrophic lakes tend to support dense aquatic plant growth in the littoral zone. Eutrophic lakes are unlikely to support a viable cold water fishery (Wetzel 2001).

*Mesotrophic* - From the Greek words *Meso*, meaning the middle and *trophi*, meaning nourishment. Mesotrophic lakes and an intermediate trophic classification on the continuum between oligotrophy and eutrophy.

*Nitrogen* – a macronutrient that can be the limiting nutrient for algae growth in lakes, but it is generally the second most limiting nutrient after phosphorus. Nitrogen enters our watersheds through biological fixation, atmospheric deposition, fertilizers, and human waste. Nitric acid, a component of acid rain produced by the combustion of fossil fuels, has contributed significantly to lake acidification (reduced pH) in our region (Driscoll et al. 2003). The plant available forms of nitrogen are ammonium and nitrate, which are generally present in very small quantities as they are rapidly assimilated into biomass. Most of the nitrogen is bound in organic matter and is released as ammonium by microbial activity and further converted to nitrate by microbes under aerobic conditions. Total nitrogen is all of the organically bound nitrogen plus the ammonium and nitrate. Under nitrogen limiting conditions, which may occur in lakes with high concentrations of phosphorus, nitrogen fixing cyanobacteria may proliferate (Wetzel 2001). Cyanobacteria are the largest group of toxin producing algae, though not all cyanobacteria produce toxins, and those that do produce toxins don't do so all of the time (Carmichael 2008).

*Oligotrophic* – From the Greek words *oligo*, meaning few and *trophi*, meaning nourishment; oligotrophic lakes have low levels of available nutrients. As a result of low nutrients, oligotrophic lakes have high transparency, low algal abundance, low organic matter in the sediments, sparse aquatic plant growth, and abundant dissolved oxygen throughout the water column the entire year. Oligotrophic lakes are most likely to support a cold water fishery (Wetzel 2001).

*pH*– pH measures the concentration of hydrogen ions in solution, and is considered a master variable for its influence on chemical processes and aquatic life. Neutral waters have a pH of 7, pH's less than 7 are acidic and pHs greater than 7 are basic. The optimum pH range for most aquatic life is between 6.5 and 8.

*Phosphorus* – a macronutrient that is often the limiting nutrient for algae growth in lakes and widely considered as the most important contributor to reduced water quality in lakes (Søndergaard et al. 2003). Natural weathering releases phosphorus from rocks and soils, and it also enters our watersheds in fertilizers, human waste, and atmospheric deposition. The plant available form is ortho-phosphate, which is generally present in very small quantities as it is rapidly assimilated into biomass. High ortho-phosphate concentrations are indicative of waste inputs (e.g. failing septic systems) or release of bound phosphorus from sediments (internal loading). Soluble total phosphorus is the fraction of total phosphorus that passes through a 0.45 micron filter. Total phosphorus is all of the inorganically and organically bound phosphorus combined, so it represents phosphorus in living tissues, detritus, and ortho-phosphate. The total phosphorus concentration in the surface waters is used as an indicator of lake trophic or productivity status; lakes with less than 10 ppb are considered oligotrophic or low productivity, lakes with 10 to 20 ppb are considered mesotrophic or moderate productivity, and lakes with greater than 20 ppb are considered eutrophic or high productivity. Total phosphorus near the lake

bottom (Hypolimnion) is monitored to understand the importance of internal loading, the release of phosphorus accumulated in sediments which replenishes surface water phosphorus when lakes turn over.

*Secchi Transparency* – widely used measurement of water clarity used as an index of lake trophic state and is important to our perception of water quality. Secchi transparency is influenced by several factors beyond algal productivity, including the eyesight of the reader, time of day of the reading, suspended sediments, and dissolved organic carbon. Increases in suspended sediments from watershed runoff, shoreline erosion, or mixing will reduce Secchi transparency, as will increases in dissolved organic carbon from these same processes. Thus, the potential effects of suspended sediments and dissolved organic carbon should also be considered when interpreting Secchi transparency data.

*Trophic Indicators*- Lakes are typically assigned into one of three trophic or productivity classes (oligotrophic, Mesotrophic, eutrophic) based on total phosphorus, total nitrogen, chlorophyll *a*, and Secchi transparency (Table 7). These four indicators are known as trophic indicators. Under conditions when water clarity is largely a function of algae biomass, there should be good correlations between chlorophyll *a*, Secchi transparency, and total phosphorus and/or total nitrogen, depending on which of these two nutrients is limiting productivity. For example, Bachmann et al. (1996) reported strong positive correlations between chlorophyll *a* and both total phosphorus and total nitrogen, and strong negative correlations between Secchi transparency and chlorophyll *a*, total phosphorus, and total nitrogen in a study of 65 lakes in Florida. But, if other factors, such as suspended sediments (Davies-Colley and Smith 2001), dissolved organic carbon (Dillon and Molot 1997), or complex food web interactions (Carpenter et al. 1985) are affecting water clarity, then the correlations between trophic indicators can be diminished to non-existent. Thus, it is important to measure all four trophic indicators to assess the trophic state of lakes and to interpret them with full consideration of other factors that can affect water clarity, otherwise the interpretations may be misleading. The NYS DEC uses a true color threshold of 30 Ptu for interpreting total phosphorus and Secchi transparency. The classification thresholds listed in Table 4 are only applied to lakes with true color less than 30 Ptu, in recognition of the relationship between true color and phosphorus availability and between true color and water clarity. The NYS DEC uses chlorophyll *a* to classify lakes with greater than 30 Ptu true color.

*Total Suspended Solids (TSS)* – Total Suspended Solids is measured as the amount of material retained on a glass fiber filter disk after a known volume of water is filtered. Because turbidity and TSS both measure particles in water, they are related and have been shown to be highly correlated (Bertrand-Krajewski 2004). These particles include silt, clay, organic matter, plankton, and other organisms. Sources of turbidity and TSS include soil erosion in the watershed, algae production, and decomposition of organic matter.

*Turbidity* – turbidity is a measure of water clarity that is based on the scattering of light by particles in the water.



**Table 7. General trophic classification of lakes (adapted from Wetzel 2001) and NYS DEC assessment criteria.**

| Indicator               | Oligotrophic | Mesotrophic | Eutrophic  |
|-------------------------|--------------|-------------|------------|
| Total phosphorus (ppb)  |              |             |            |
| Mean                    | 8.0          | 26.7        | 84.4       |
| Range                   | 3.0 - 17.7   | 10.9 - 95.6 | 16 – 386   |
| NYS DEC                 | < 10         | 10 - 20     | > 20       |
| Total nitrogen (ppb)    |              |             |            |
| Mean                    | 661          | 753         | 1875       |
| Range                   | 307 - 1630   | 361 - 1387  | 393 - 6100 |
| Chlorophyll a (ppb)     |              |             |            |
| Mean                    | 1.7          | 4.7         | 14.3       |
| Range                   | 0.3 - 4.5    | 3 – 11      | 3 – 78     |
| NYS DEC                 | < 2          | 2 - 8       | > 8        |
| Secchi transparency (m) |              |             |            |
| Mean                    | 9.9          | 4.2         | 2.45       |
| Range                   | 5.4 - 28.3   | 1.5 - 8.1   | 0.8 - 7.0  |
| NYS DEC                 | > 5          | 2 - 5       | < 2        |